

DRAFT

Lower Bear River - Instream Flow Study

SSWD HDR

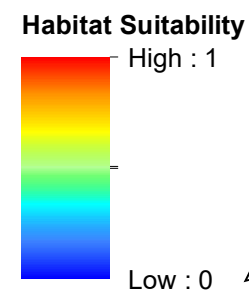
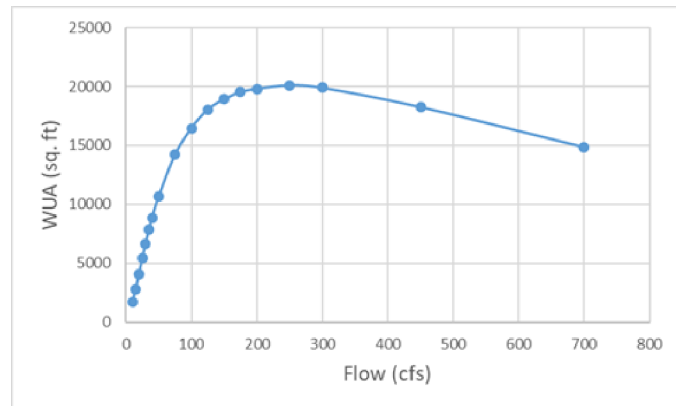
Fall-Run Chinook Salmon
Downstream Study Site 10 cfs



Downstream Site

Upstream Site

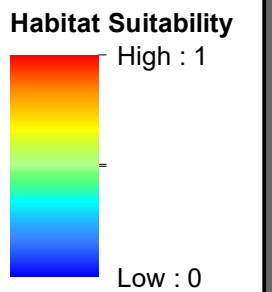
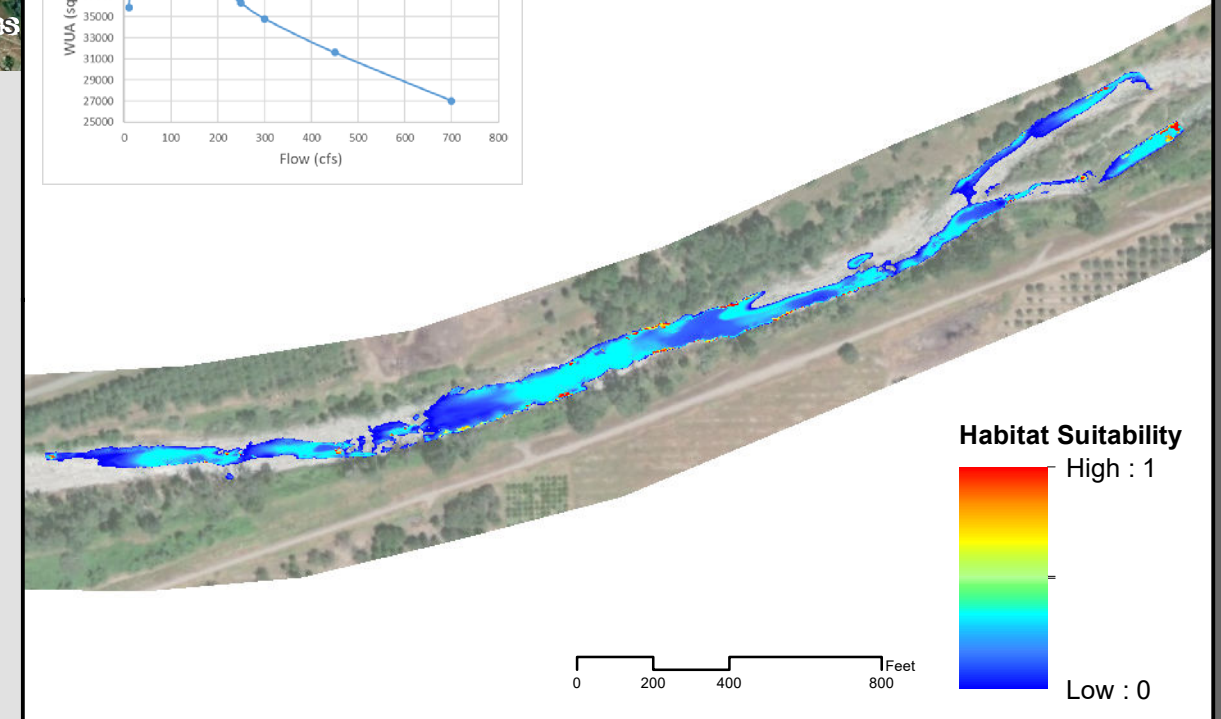
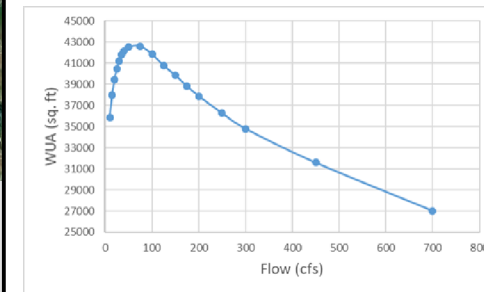
Spawning



0 205 410 820 Feet

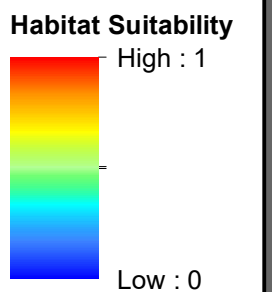
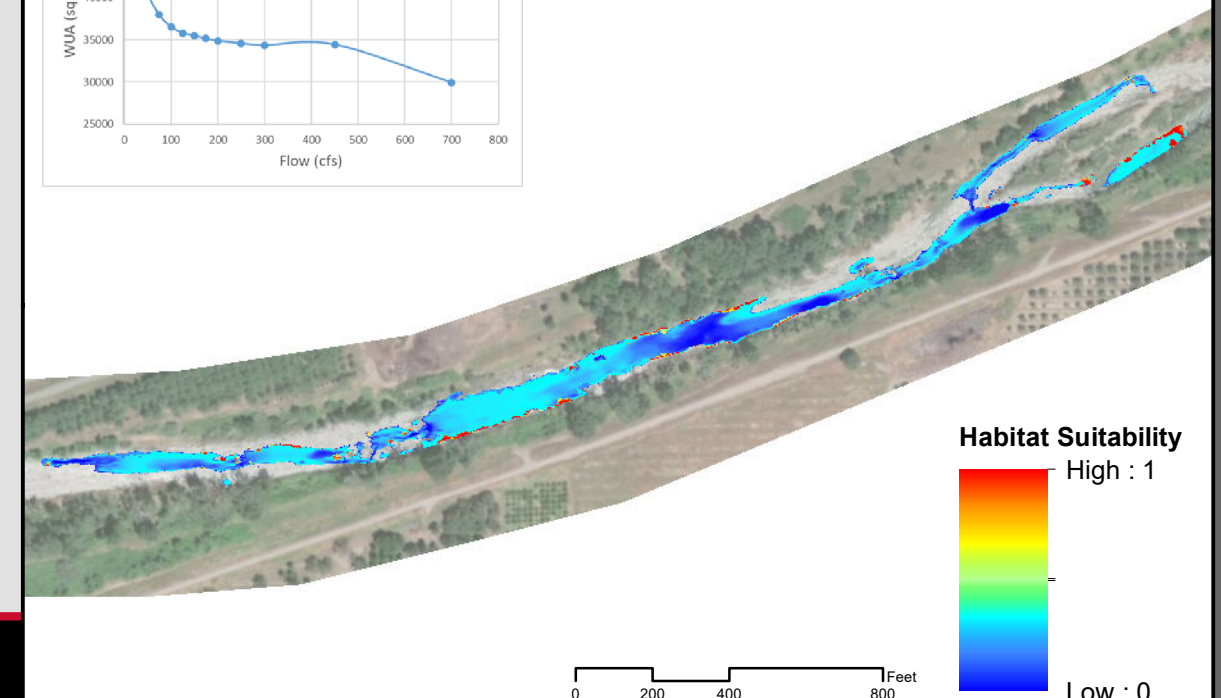
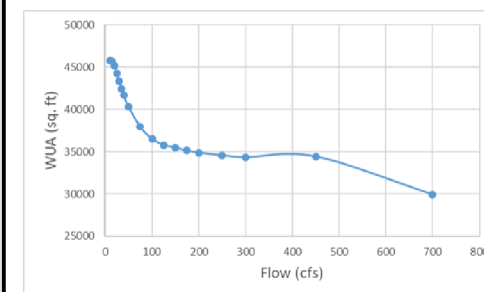


Juvenile



0 200 400 800 Feet

Fry



0 200 400 800 Feet

DRAFT

Lower Bear River - Instream Flow Study

SSWD HDR

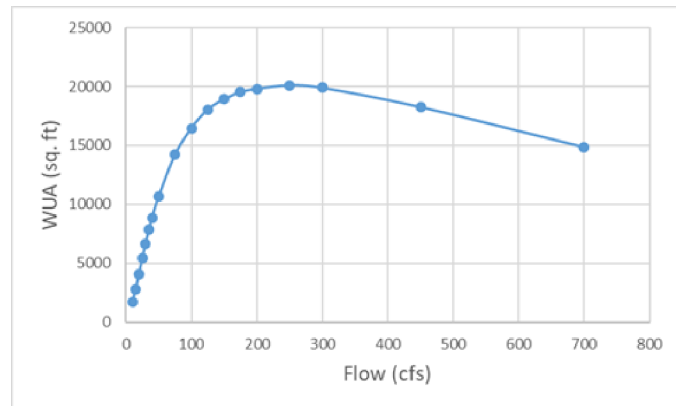
Fall-Run Chinook Salmon
Downstream Study Site 15 cfs



Downstream Site

Upstream Site

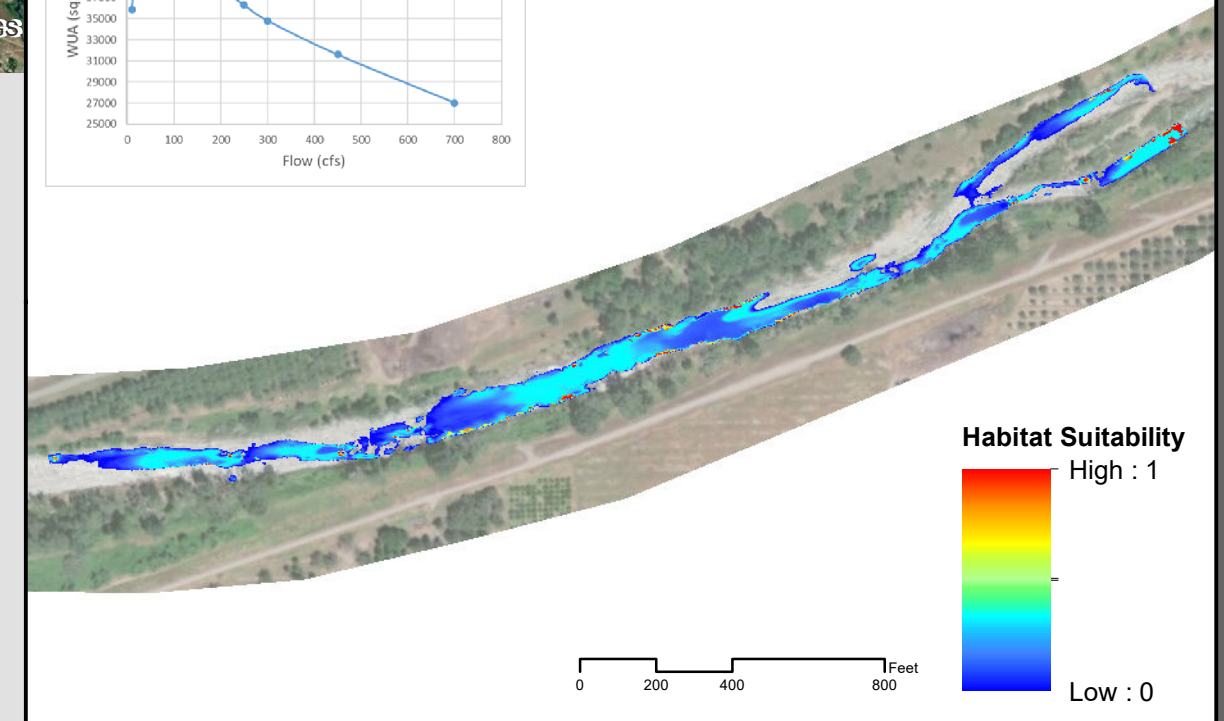
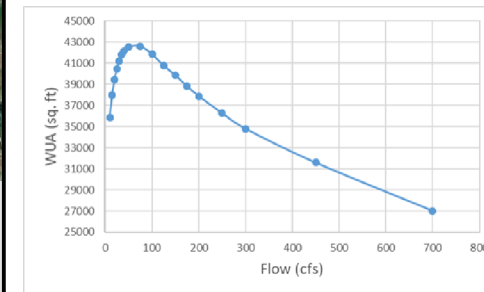
Spawning



Habitat Suitability
High : 1
Low : 0

0 205 410 820 Feet

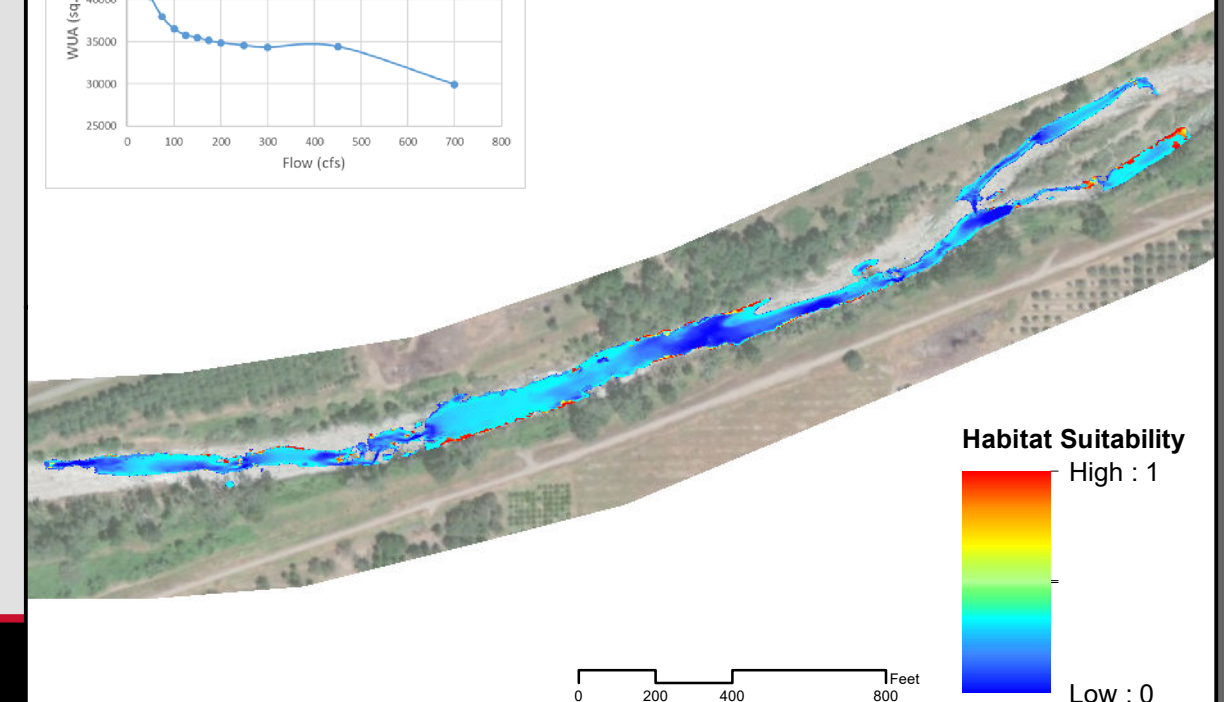
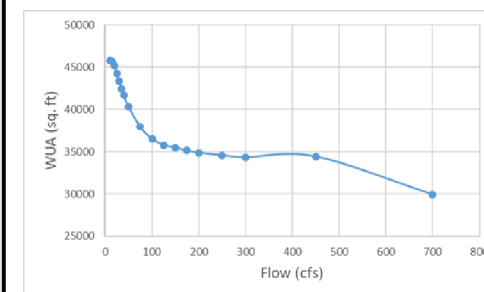
Juvenile



Habitat Suitability
High : 1
Low : 0

0 200 400 800 Feet

Fry



Habitat Suitability
High : 1
Low : 0

0 200 400 800 Feet

DRAFT

Lower Bear River - Instream Flow Study

SSWD HDR

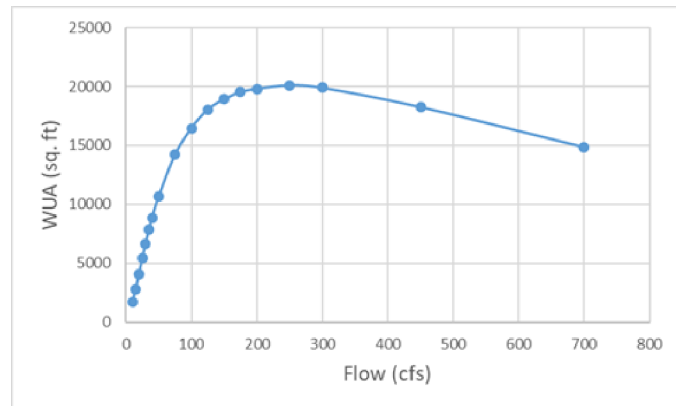
Fall-Run Chinook Salmon
Downstream Study Site 20 cfs



Downstream Site

Upstream Site

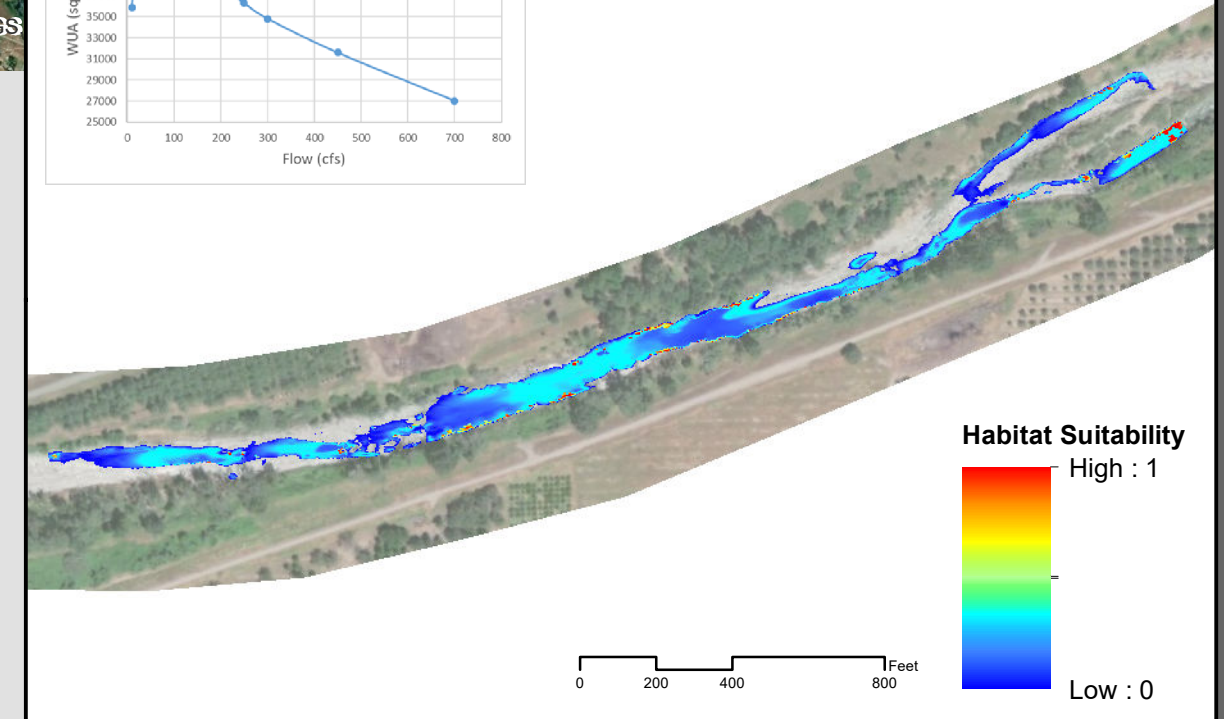
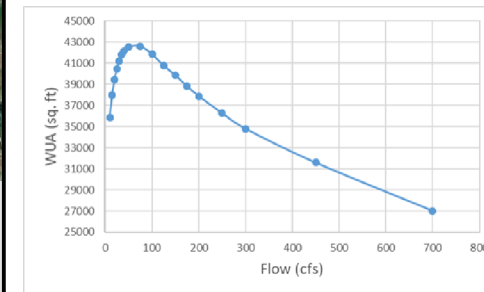
Spawning



Habitat Suitability
High : 1
Low : 0

0 205 410 820 Feet

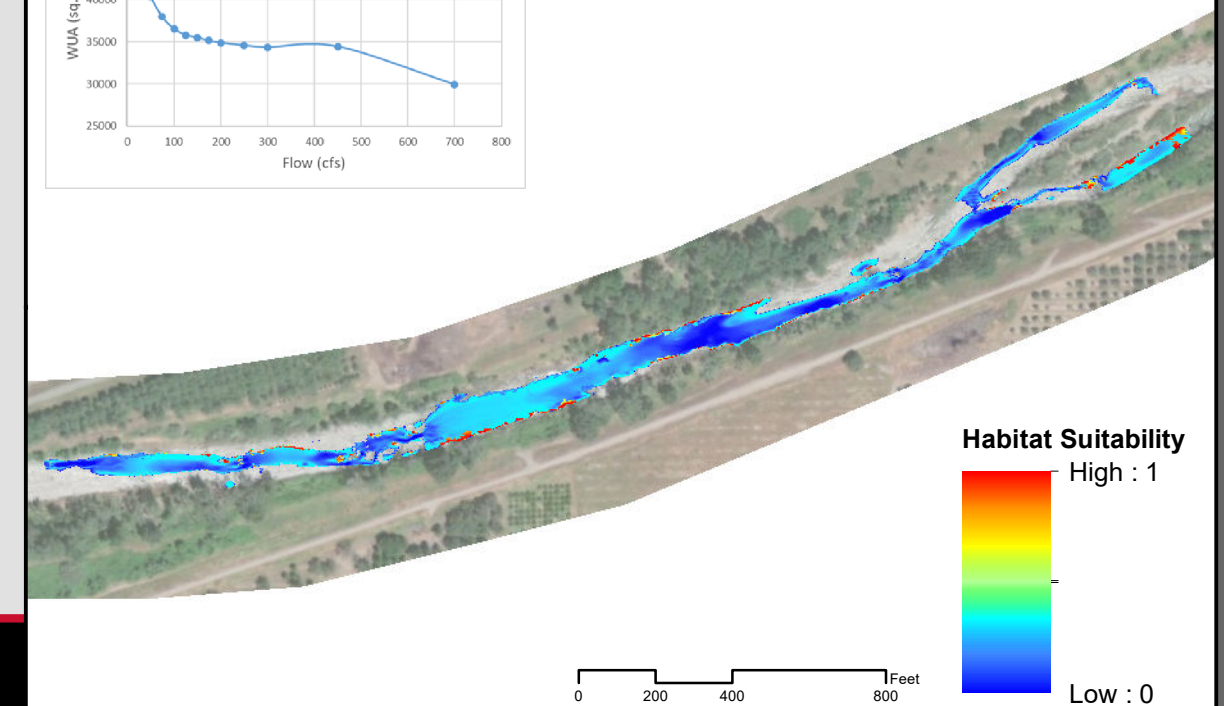
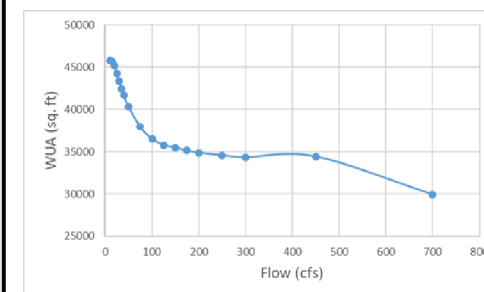
Juvenile



Habitat Suitability
High : 1
Low : 0

0 200 400 800 Feet

Fry



Habitat Suitability
High : 1
Low : 0

0 200 400 800 Feet

DRAFT

Lower Bear River - Instream Flow Study

SSWD HDR

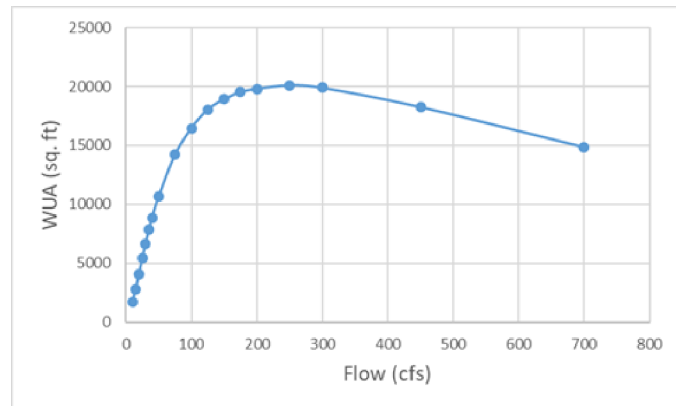
Fall-Run Chinook Salmon
Downstream Study Site 25 cfs



Downstream Site

Upstream Site

Spawning

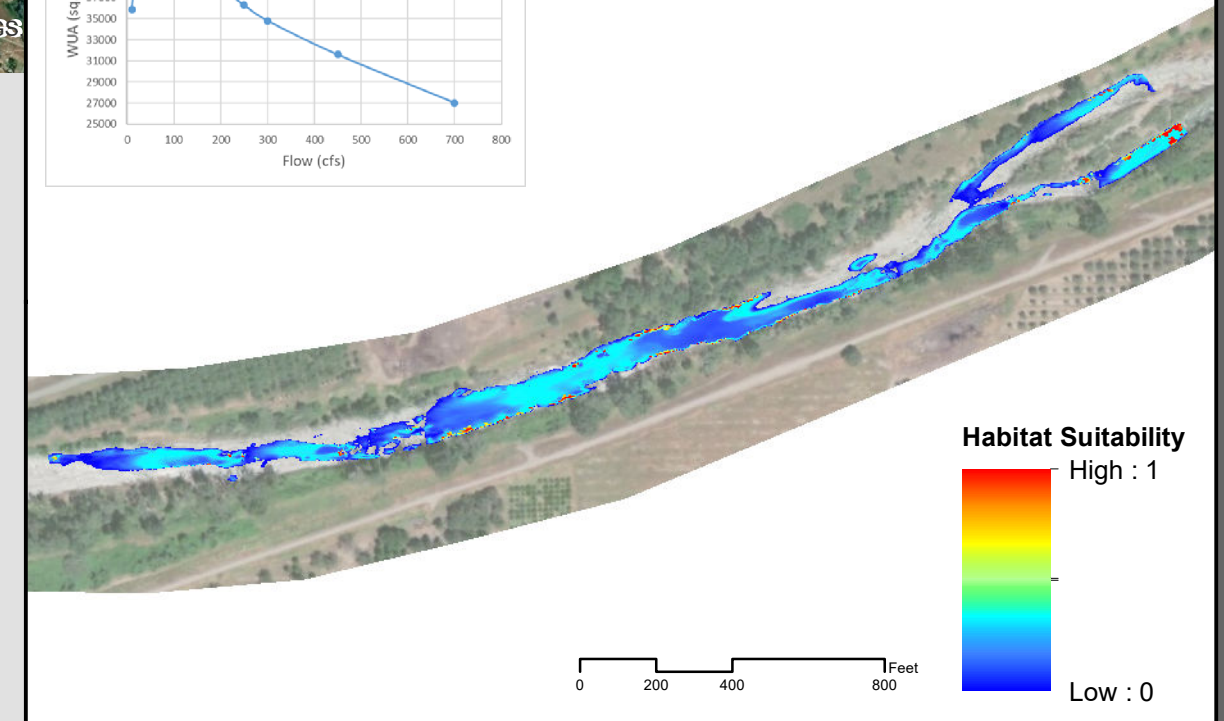
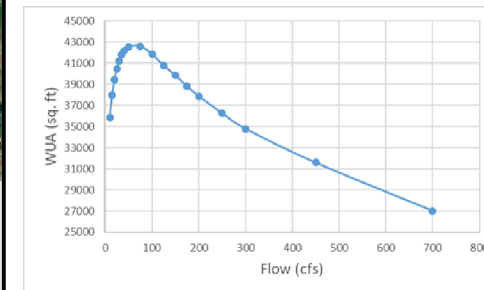


Habitat Suitability
High : 1
Low : 0



0 205 410 820 Feet

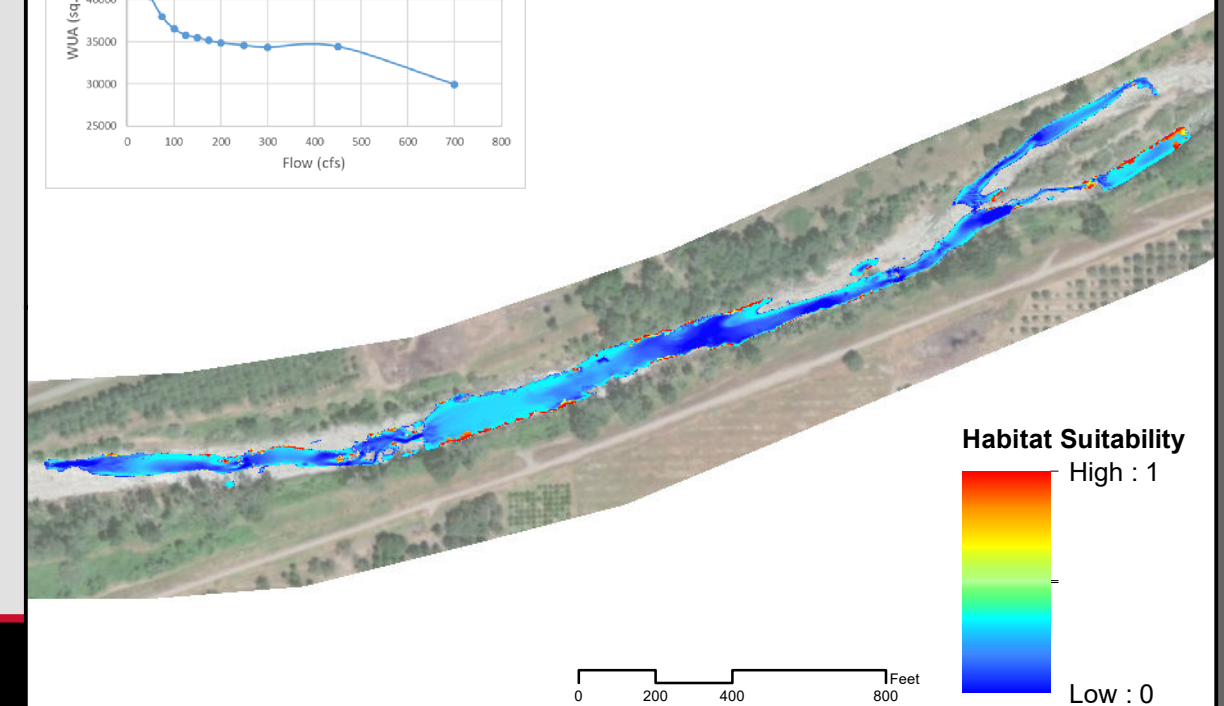
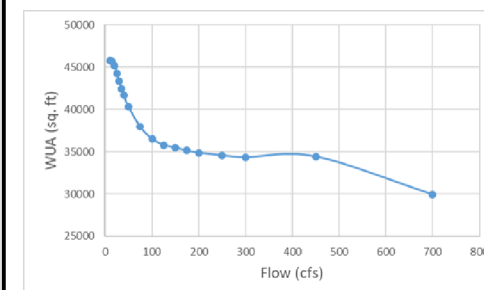
Juvenile



Habitat Suitability
High : 1
Low : 0

0 200 400 800 Feet

Fry



Habitat Suitability
High : 1
Low : 0

0 200 400 800 Feet

DRAFT

Lower Bear River - Instream Flow Study

SSWD HDR

Fall-Run Chinook Salmon
Downstream Study Site 30 cfs

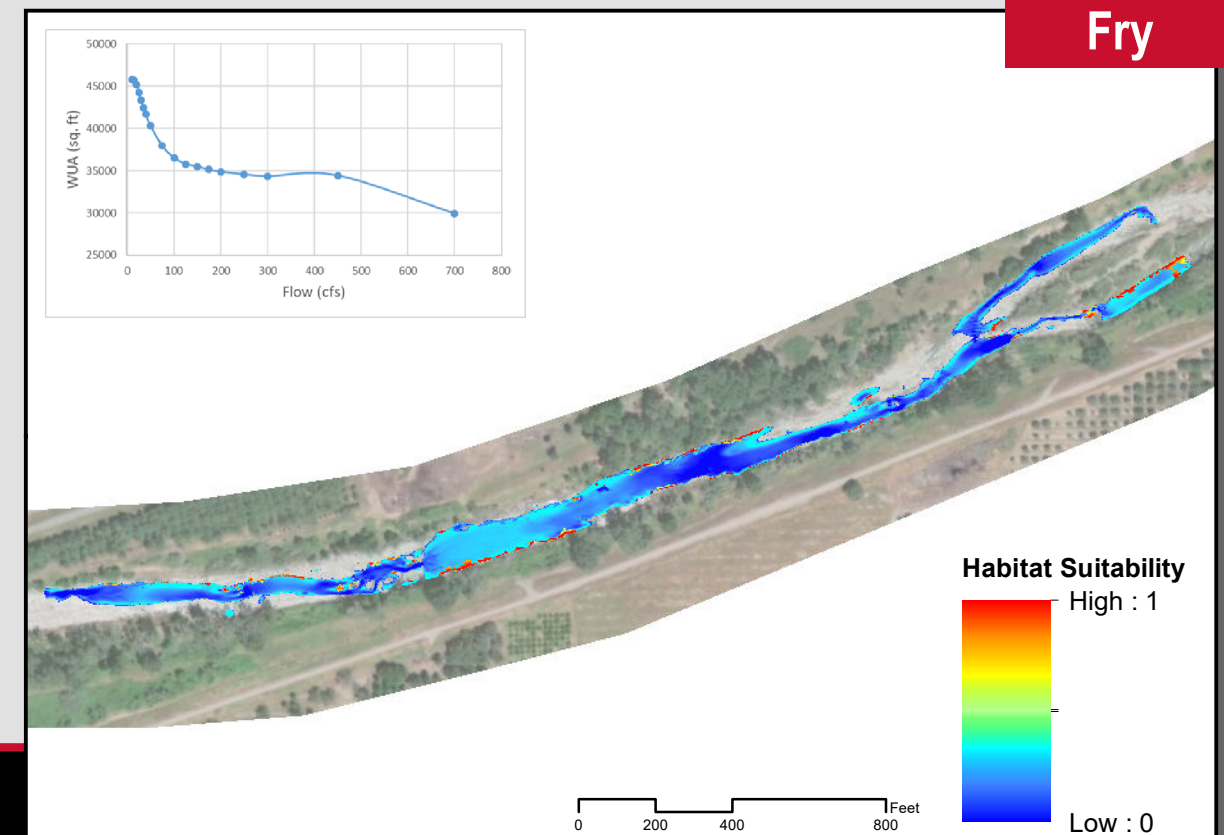
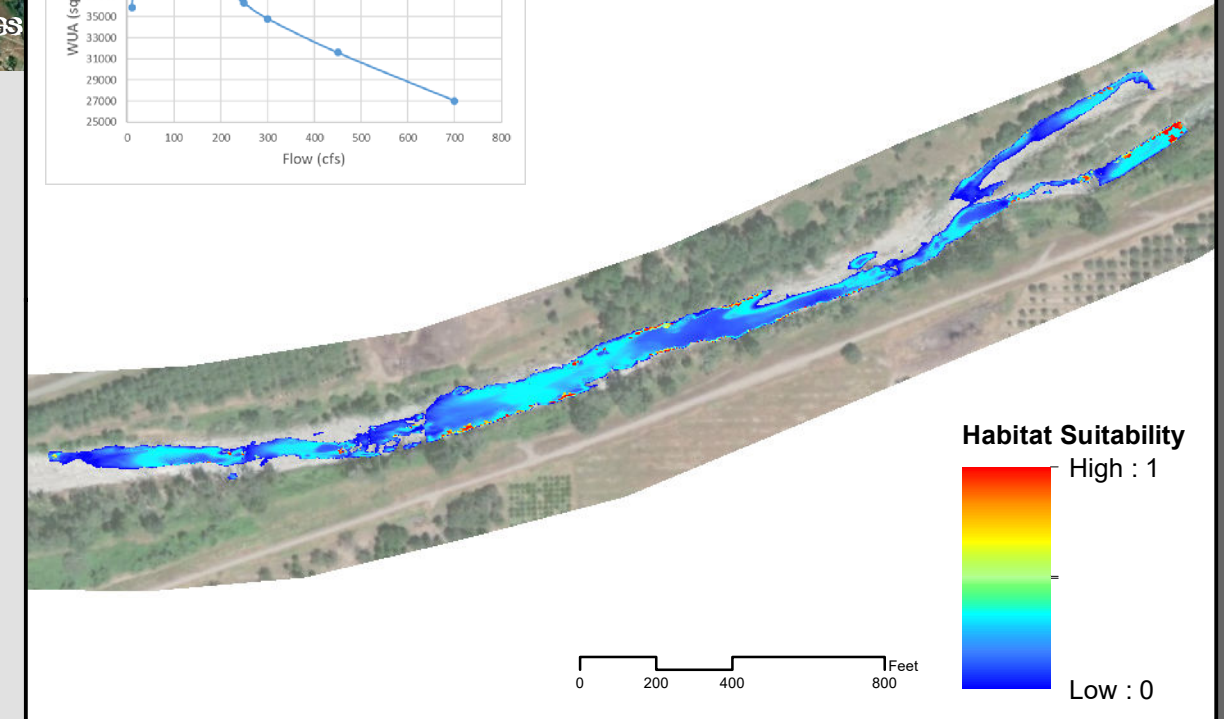
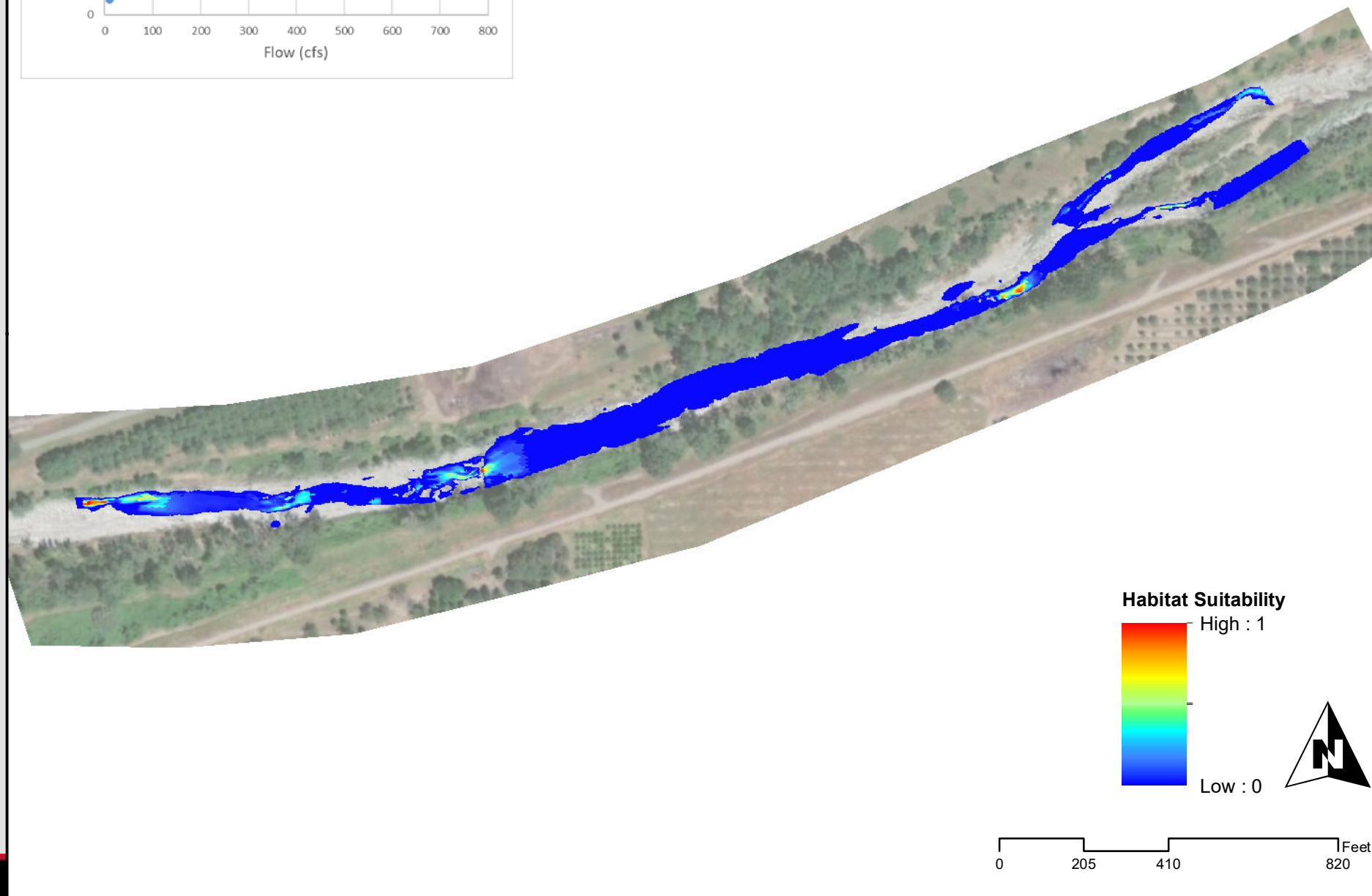
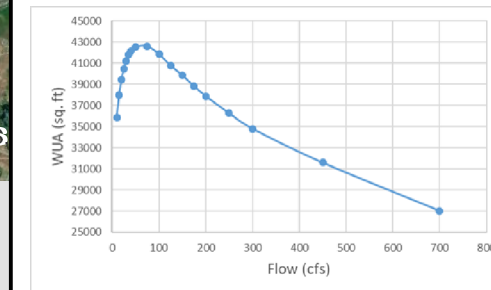
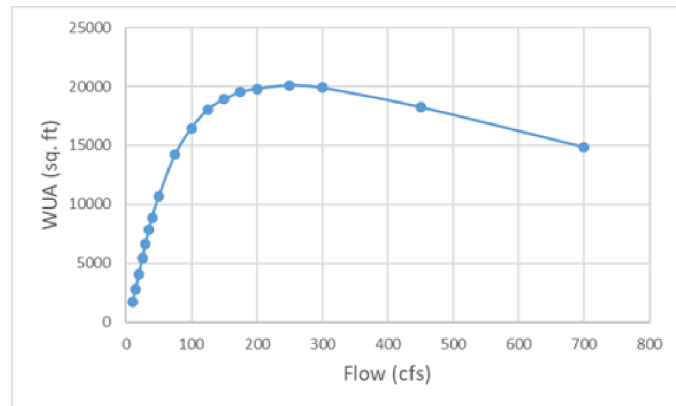
Downstream Site

Upstream Site

Spawning

Juvenile

Fry

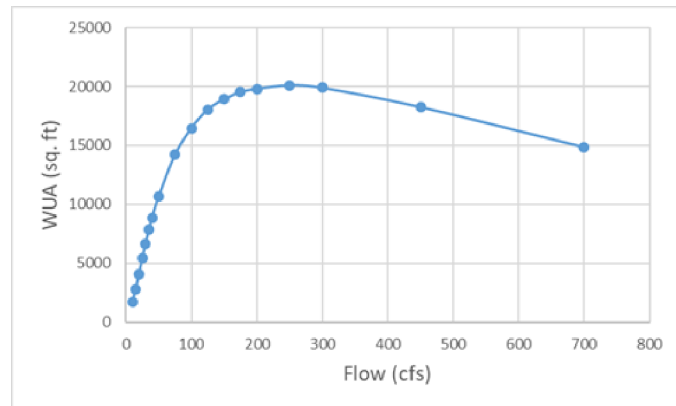


DRAFT

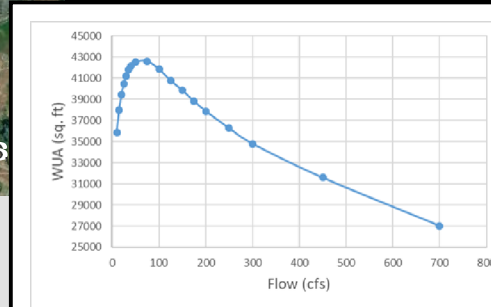
Lower Bear River - Instream Flow Study

SSWD HDR

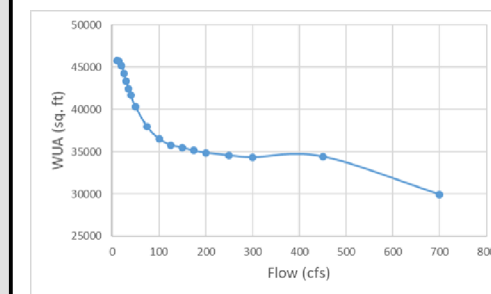
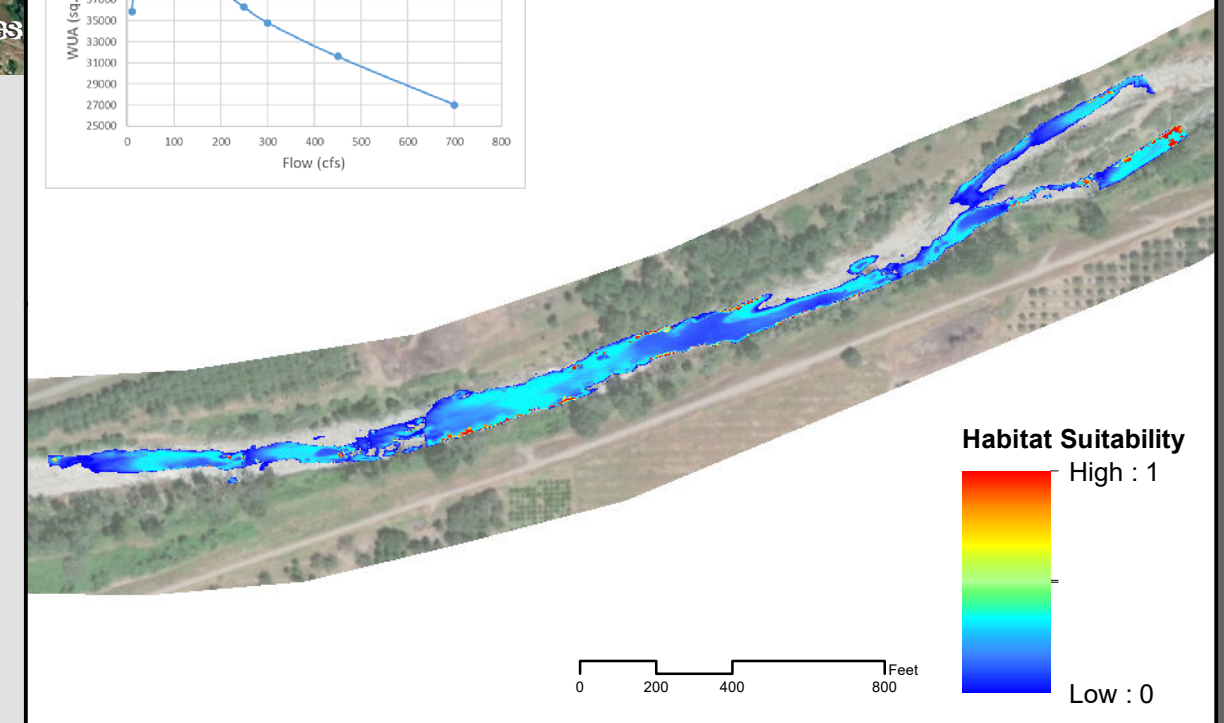
Fall-Run Chinook Salmon
Downstream Study Site 35 cfs



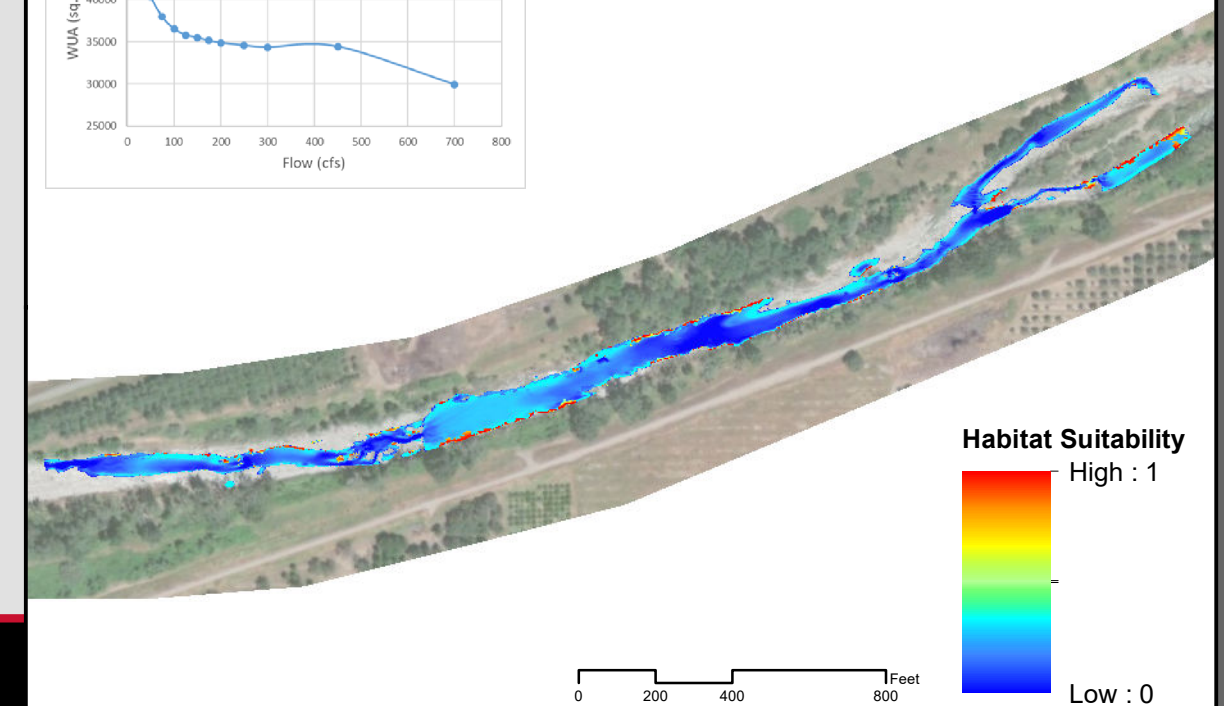
Spawning



Juvenile



Fry

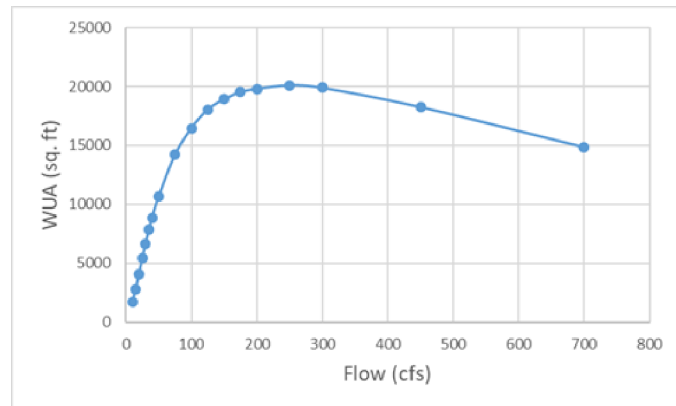


DRAFT

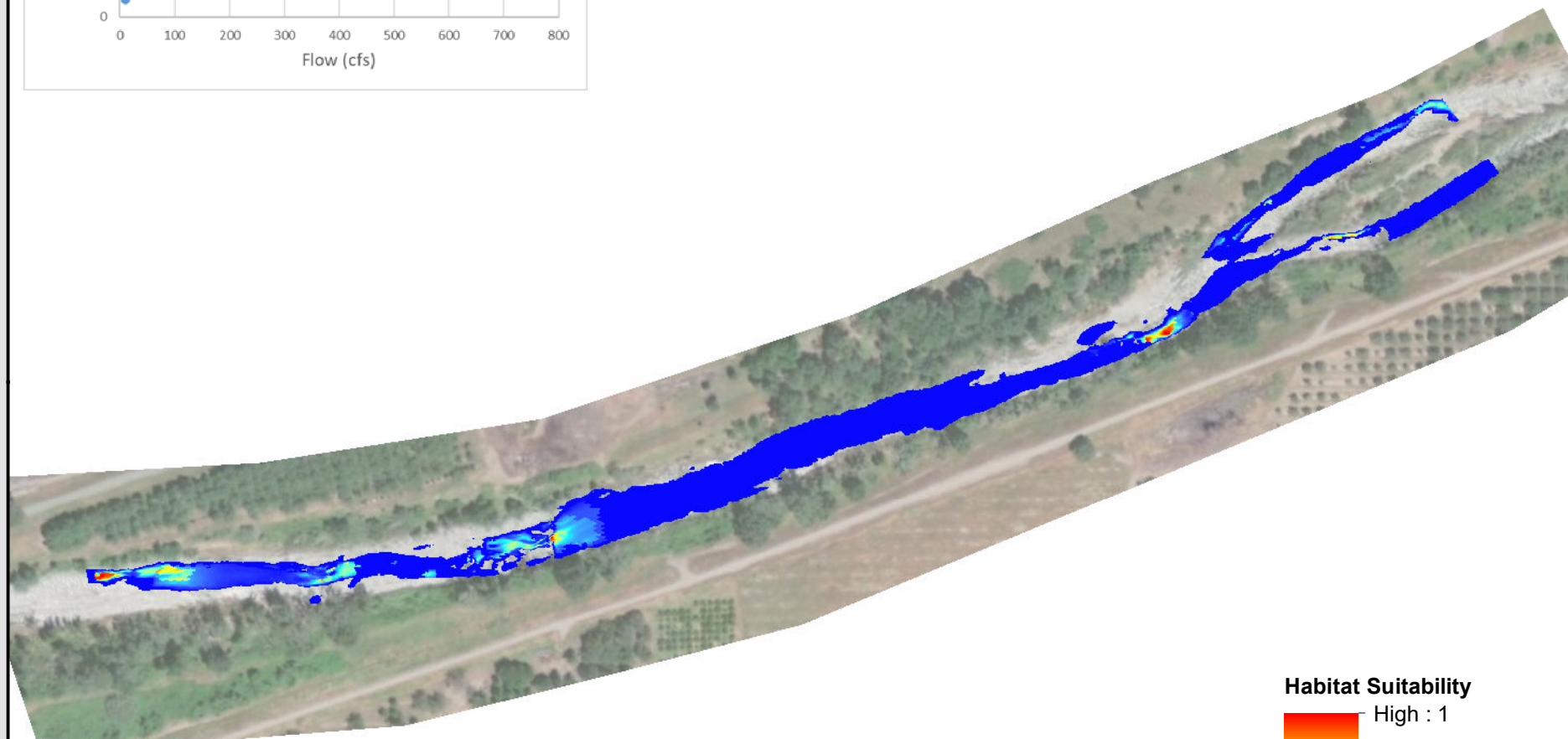
Lower Bear River - Instream Flow Study

SSWD HDR

Fall-Run Chinook Salmon
Downstream Study Site 40 cfs

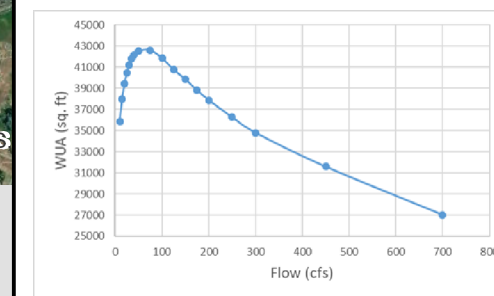


Spawning

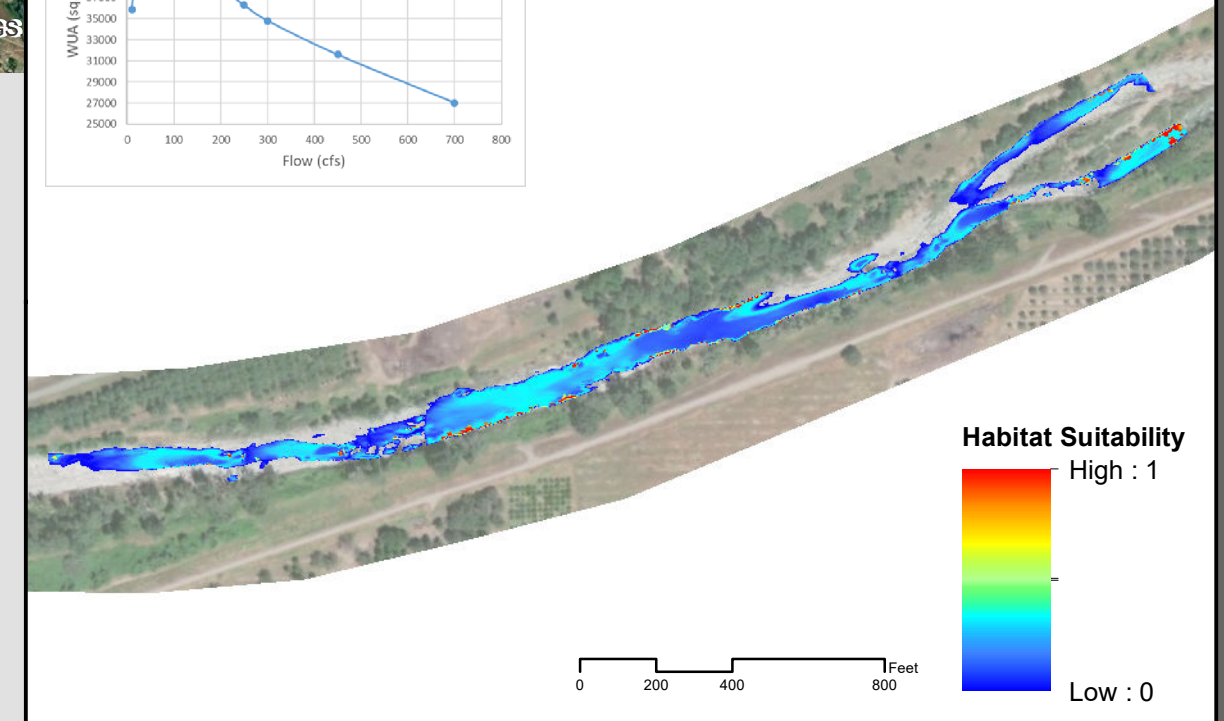


Habitat Suitability
High : 1
Low : 0

0 205 410 820 Feet

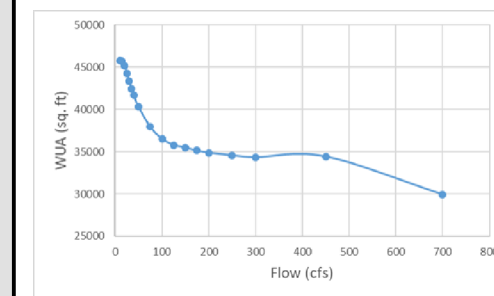


Juvenile

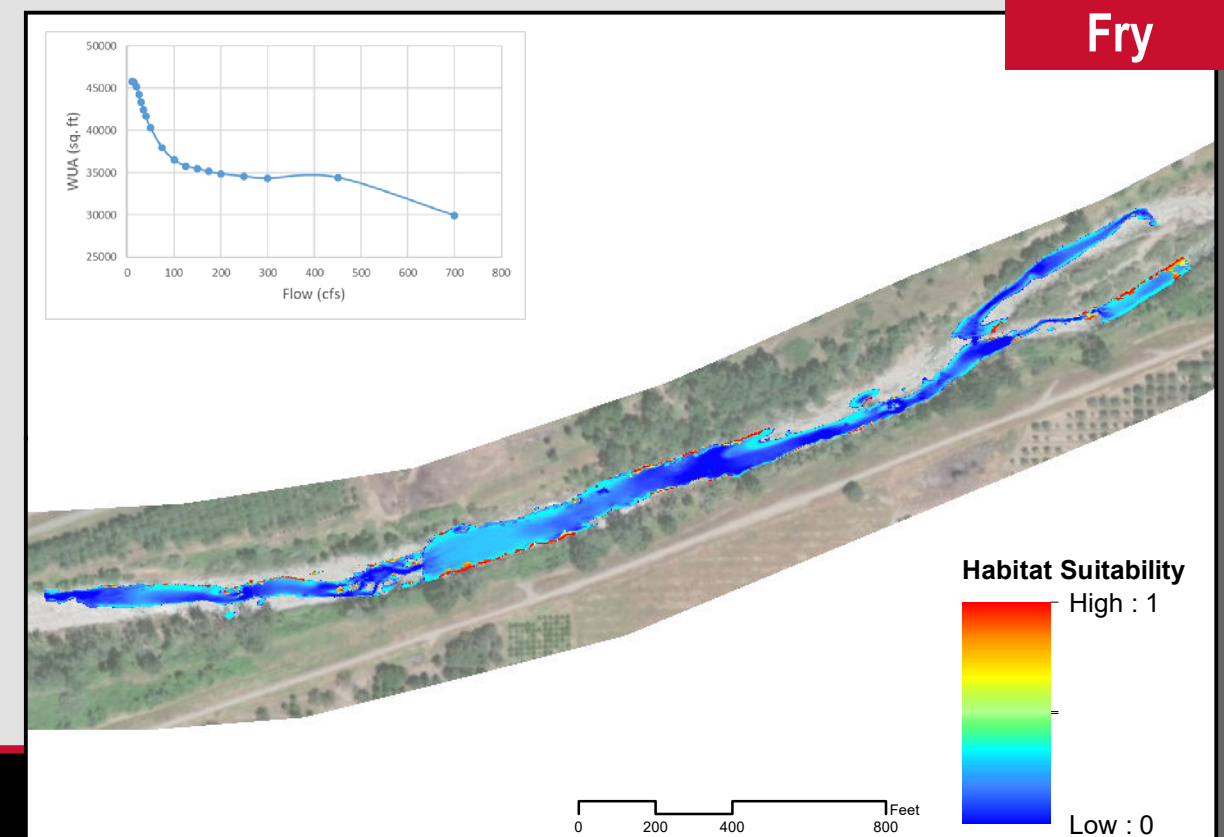


Habitat Suitability
High : 1
Low : 0

0 200 400 800 Feet



Fry



Habitat Suitability
High : 1
Low : 0

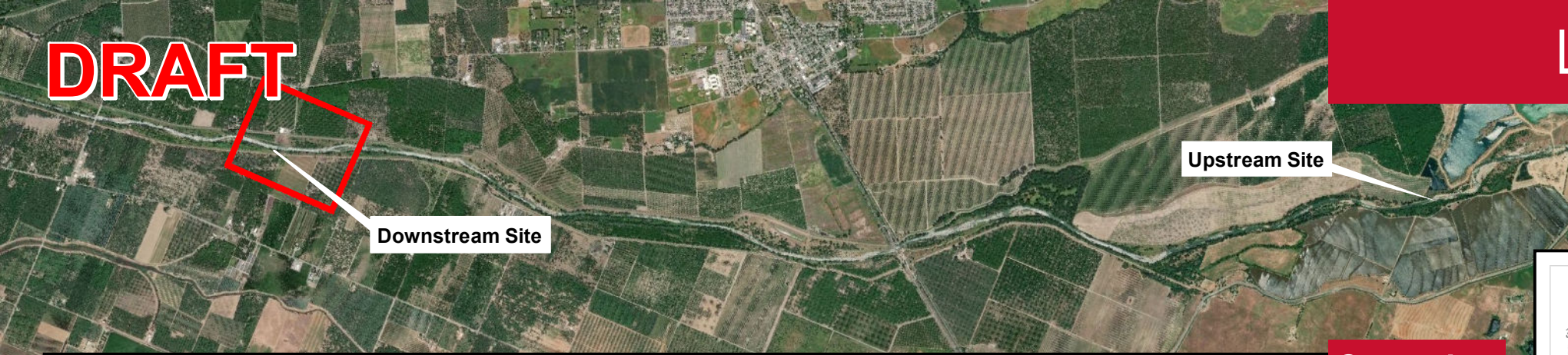
0 200 400 800 Feet

DRAFT

Lower Bear River - Instream Flow Study

SSWD HDR

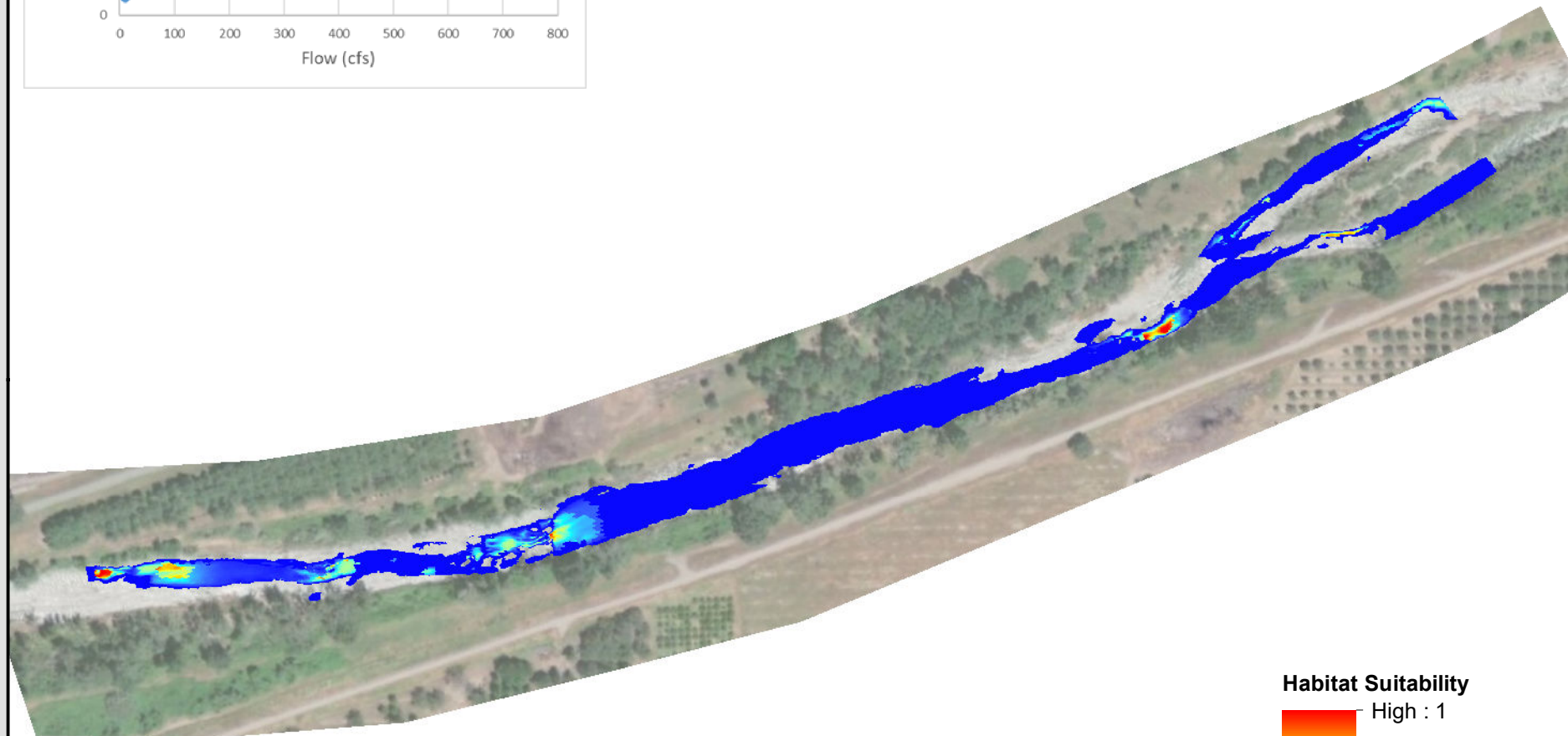
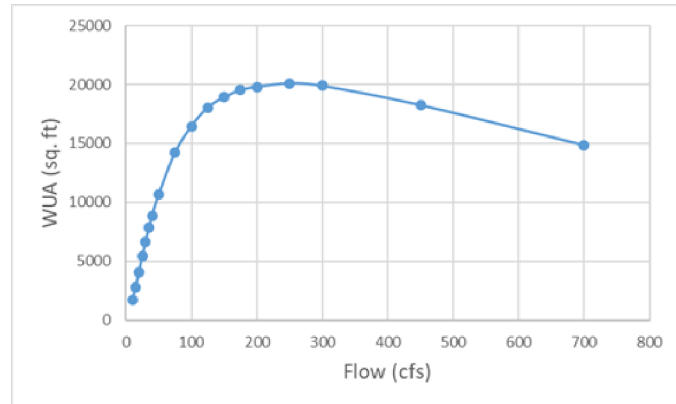
Fall-Run Chinook Salmon
Downstream Study Site 50 cfs



Downstream Site

Upstream Site

Spawning

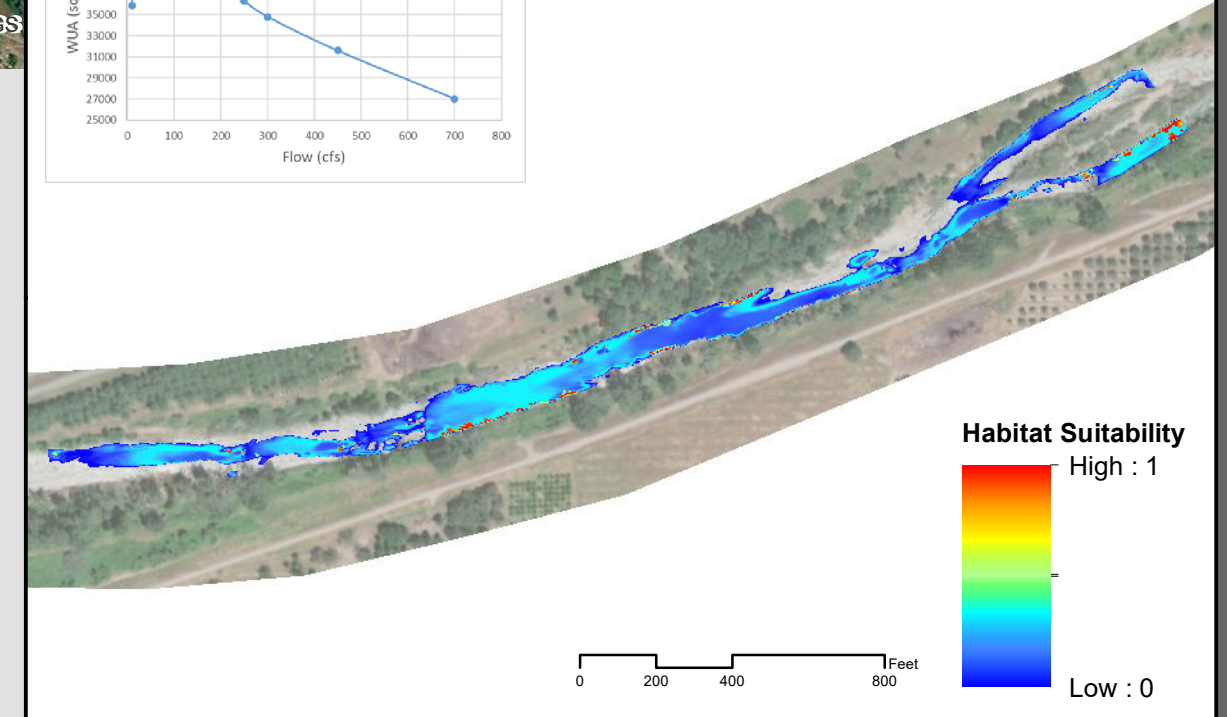
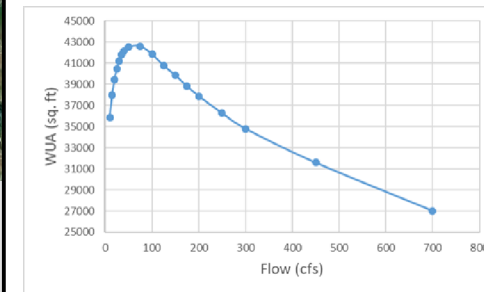


Habitat Suitability
High : 1
Low : 0



0 205 410 820 Feet

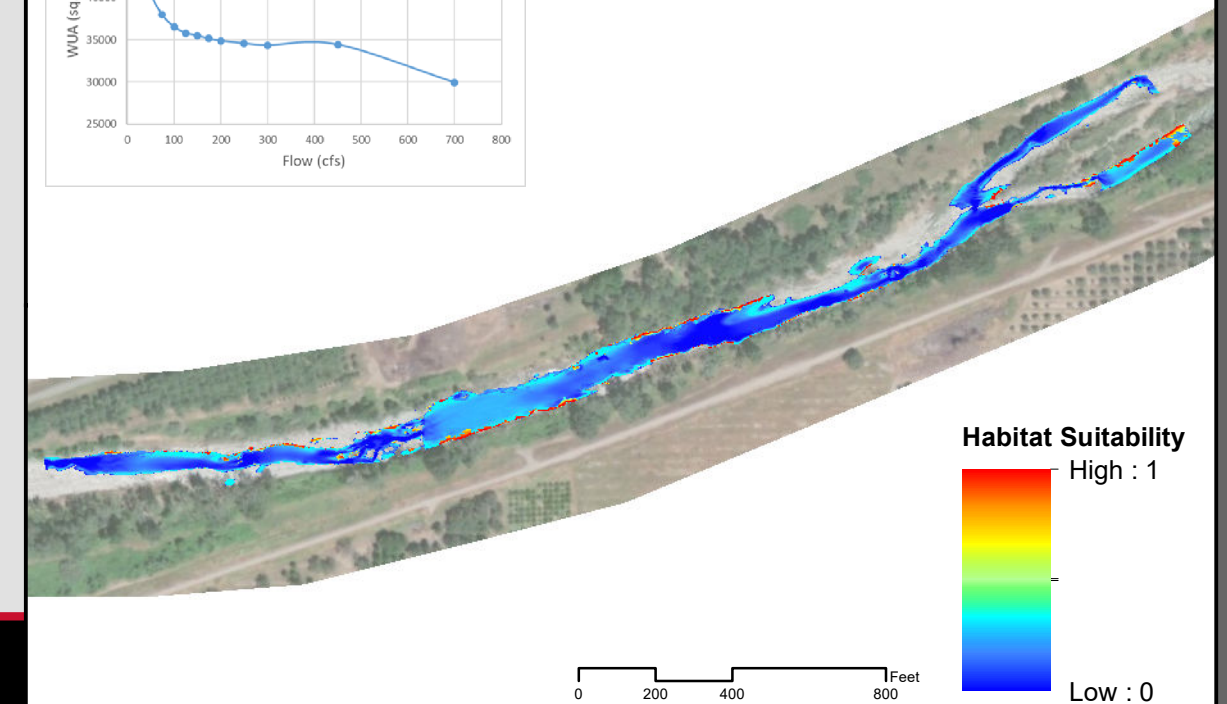
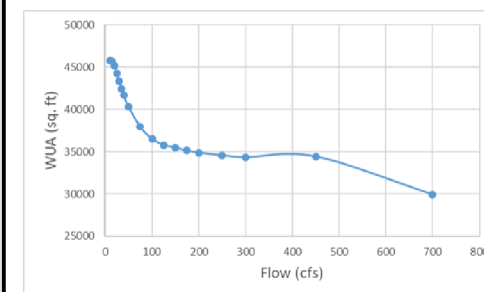
Juvenile



Habitat Suitability
High : 1
Low : 0

0 200 400 800 Feet

Fry



Habitat Suitability
High : 1
Low : 0

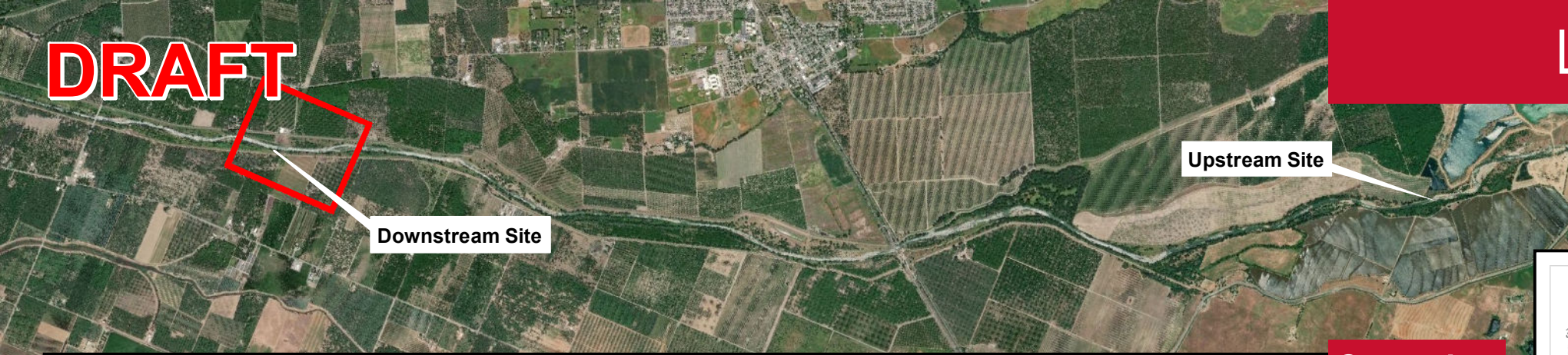
0 200 400 800 Feet

DRAFT

Lower Bear River - Instream Flow Study

SSWD HDR

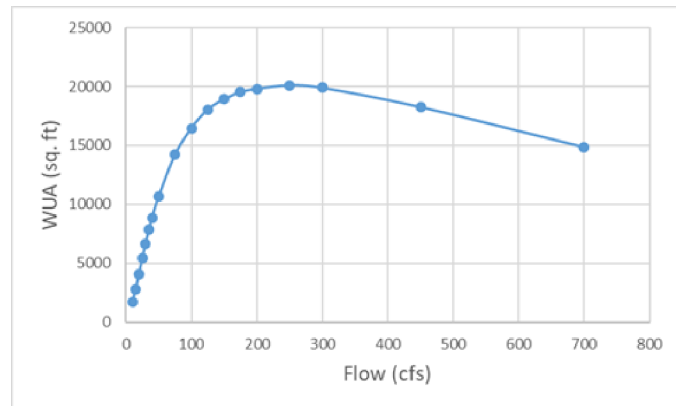
Fall-Run Chinook Salmon
Downstream Study Site 75 cfs



Downstream Site

Upstream Site

Spawning

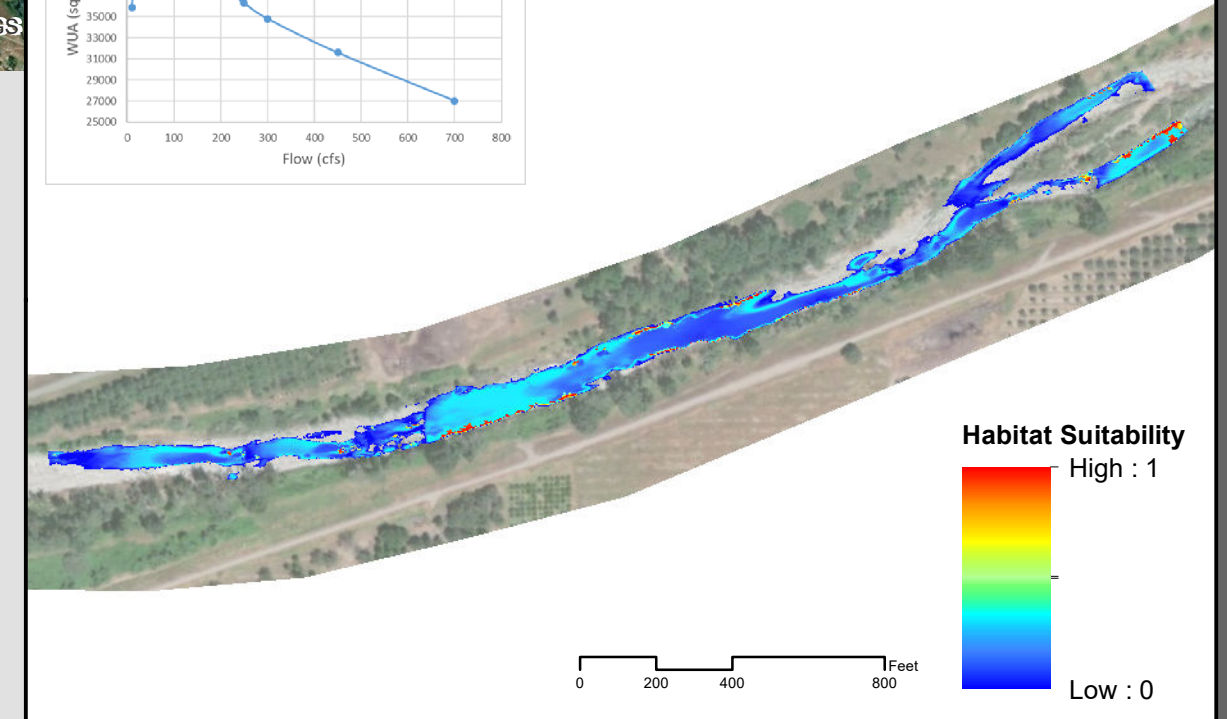
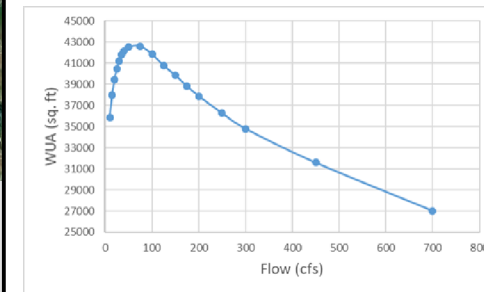


Habitat Suitability
High : 1
Low : 0



0 205 410 820 Feet

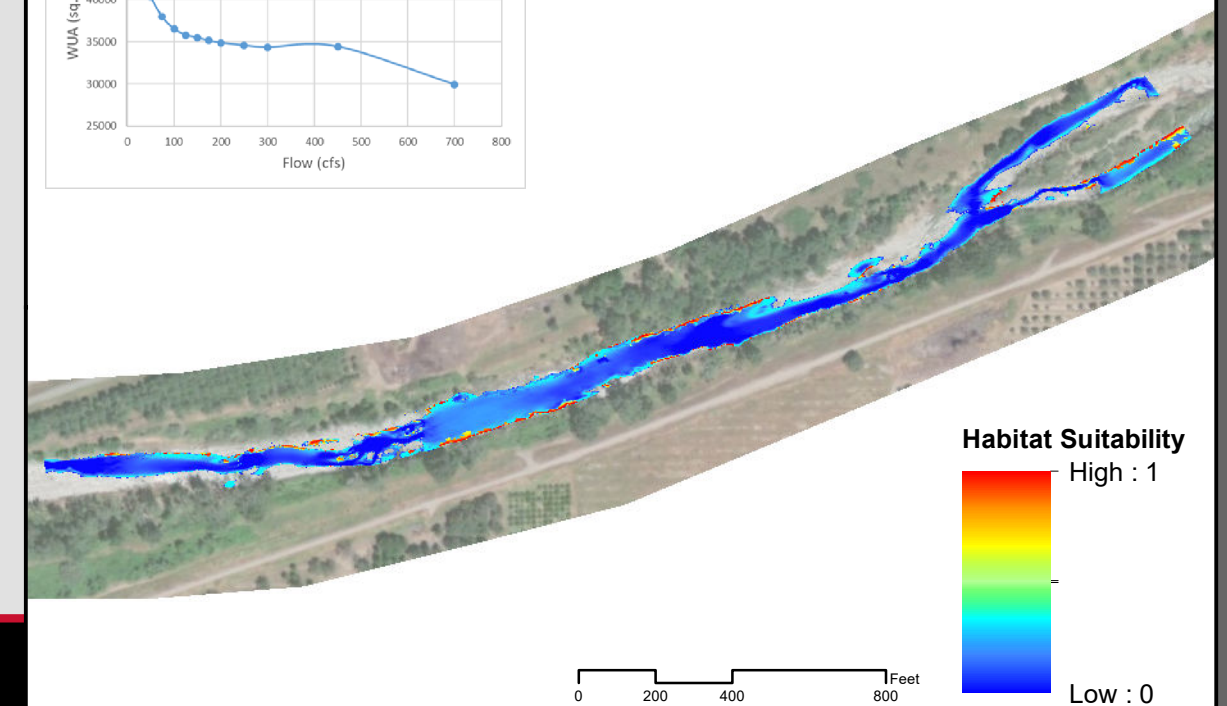
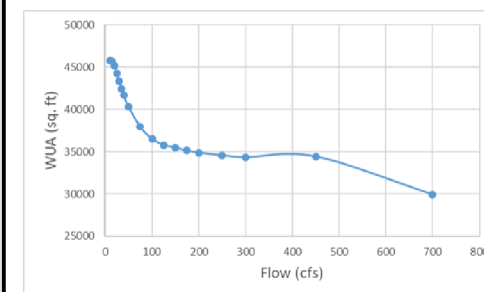
Juvenile



Habitat Suitability
High : 1
Low : 0

0 200 400 800 Feet

Fry



Habitat Suitability
High : 1
Low : 0

0 200 400 800 Feet

DRAFT

Lower Bear River - Instream Flow Study

SSWD HDR

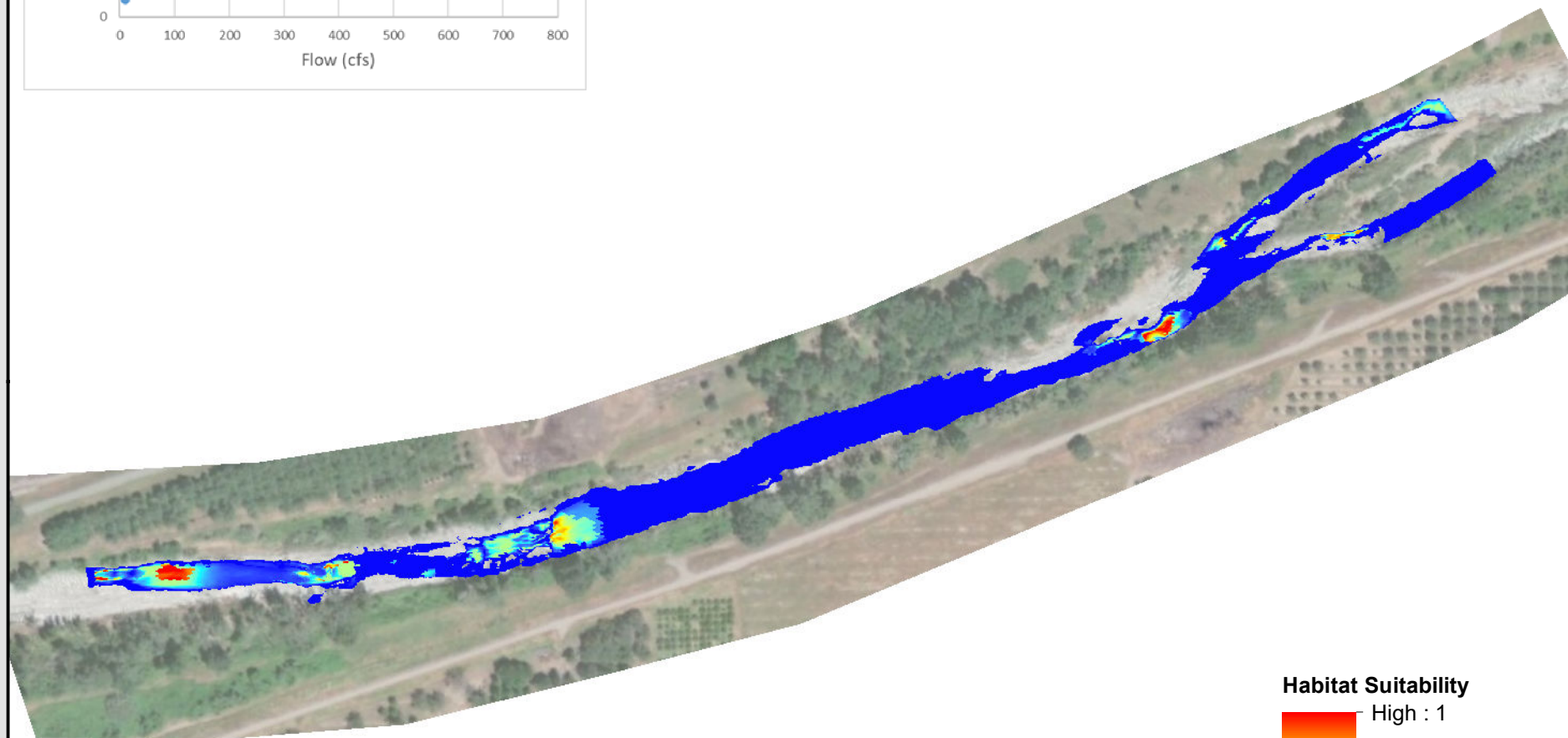
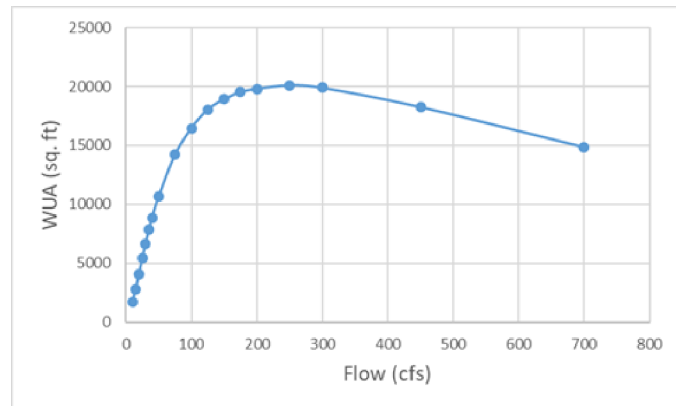
Fall-Run Chinook Salmon
Downstream Study Site 100 cfs



Downstream Site

Upstream Site

Spawning



Habitat Suitability

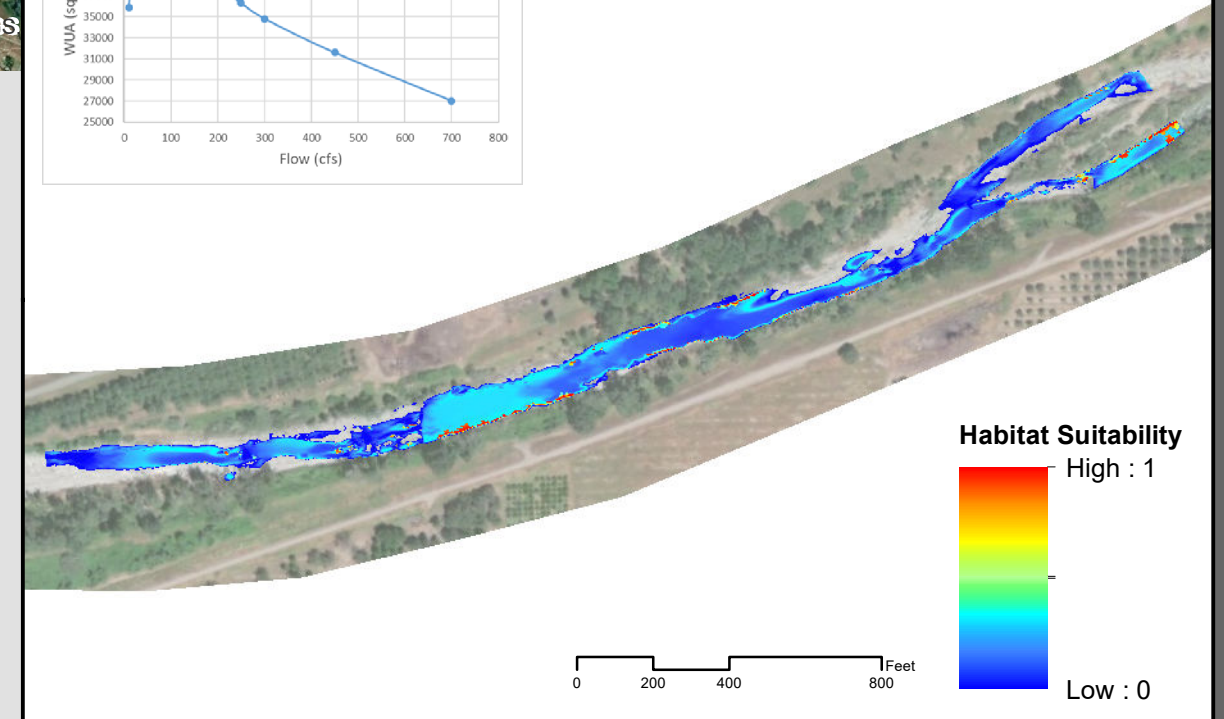
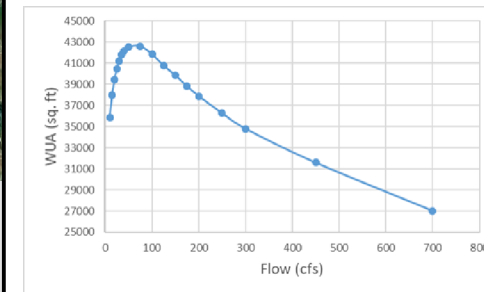
High : 1

Low : 0

0 205 410 820 Feet



Juvenile



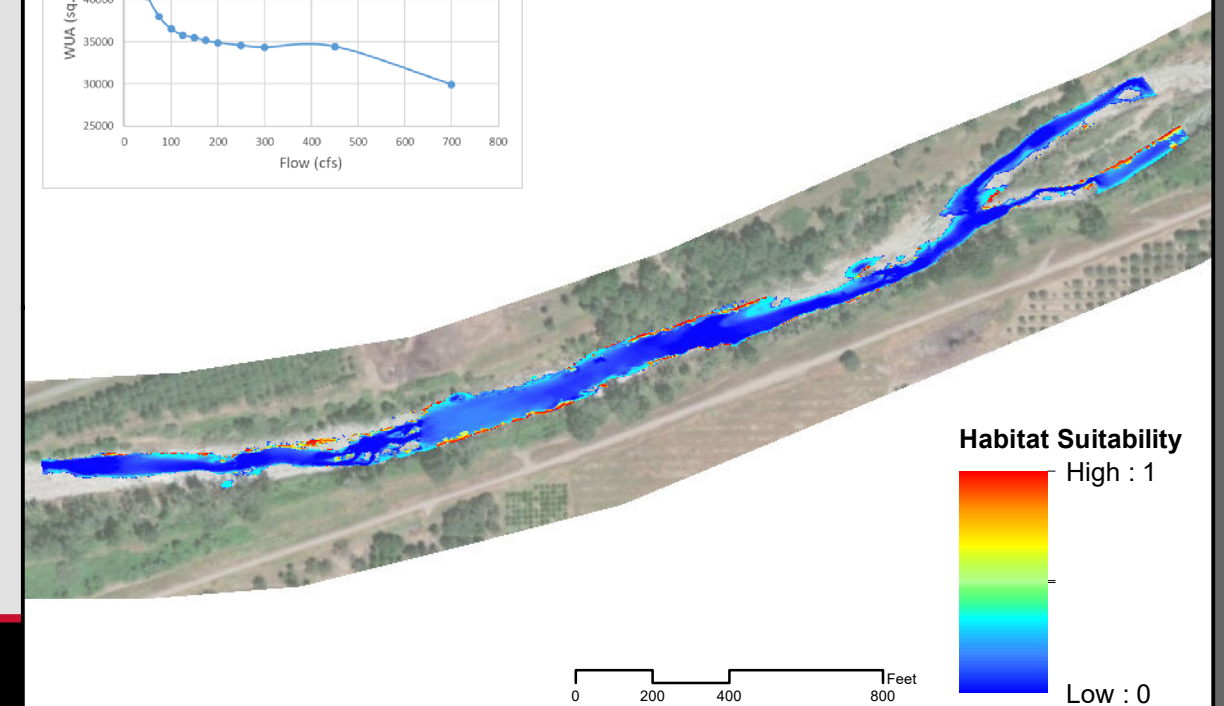
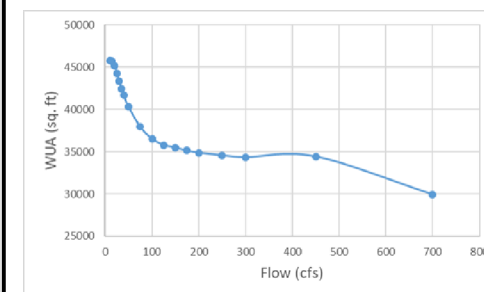
Habitat Suitability

High : 1

Low : 0

0 200 400 800 Feet

Fry



Habitat Suitability

High : 1

Low : 0

0 200 400 800 Feet

DRAFT

Lower Bear River - Instream Flow Study

SSWD HDR

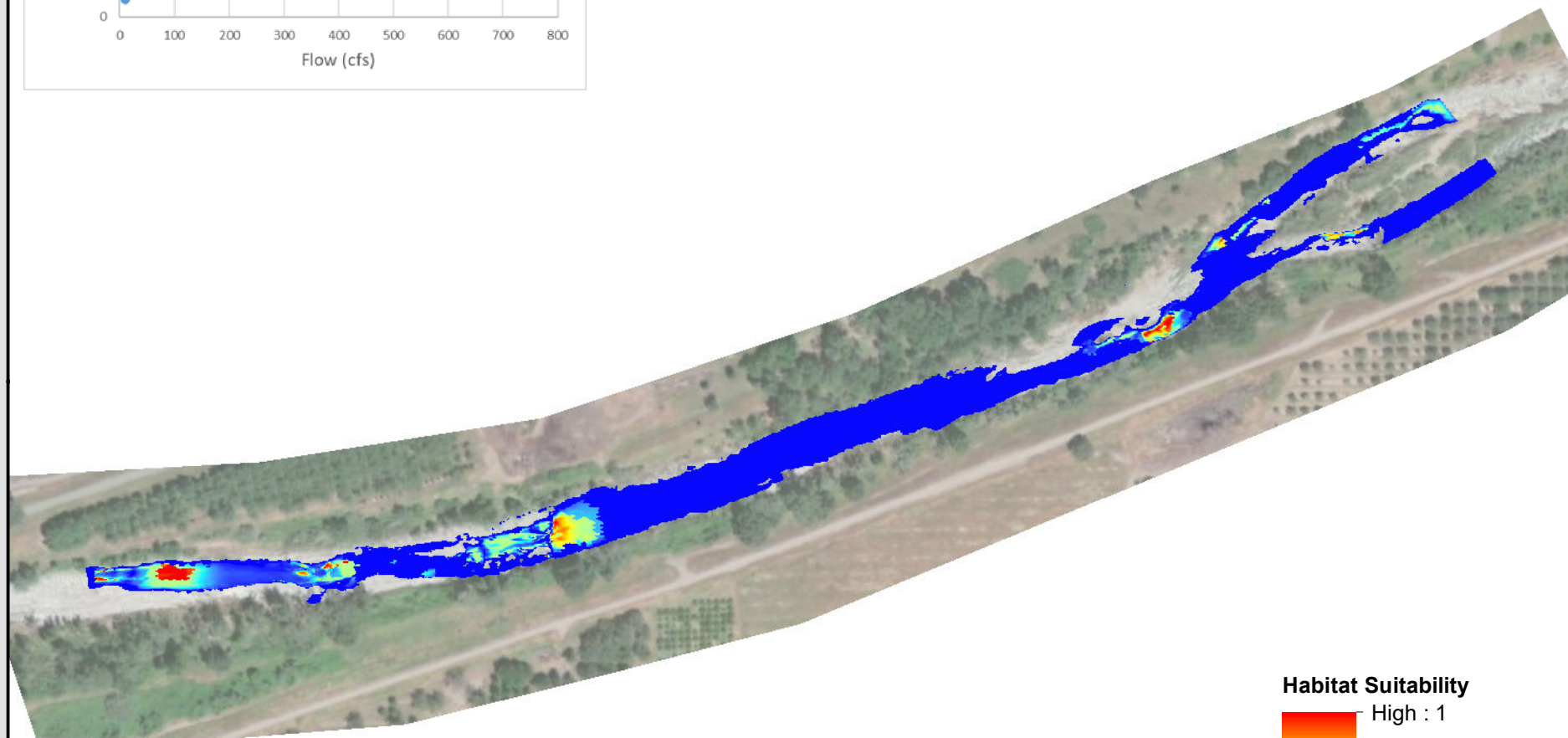
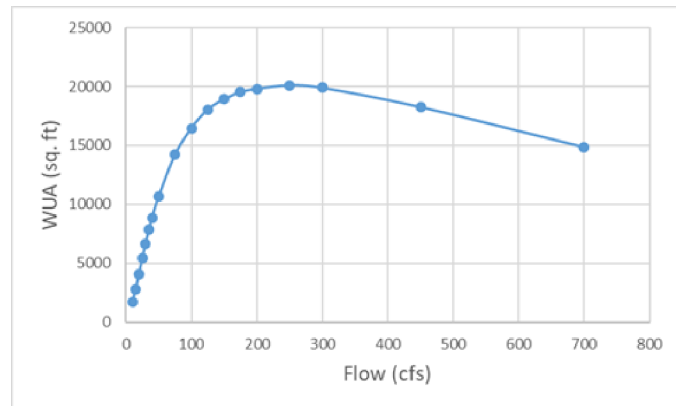
Fall-Run Chinook Salmon
Downstream Study Site 125 cfs



Downstream Site

Upstream Site

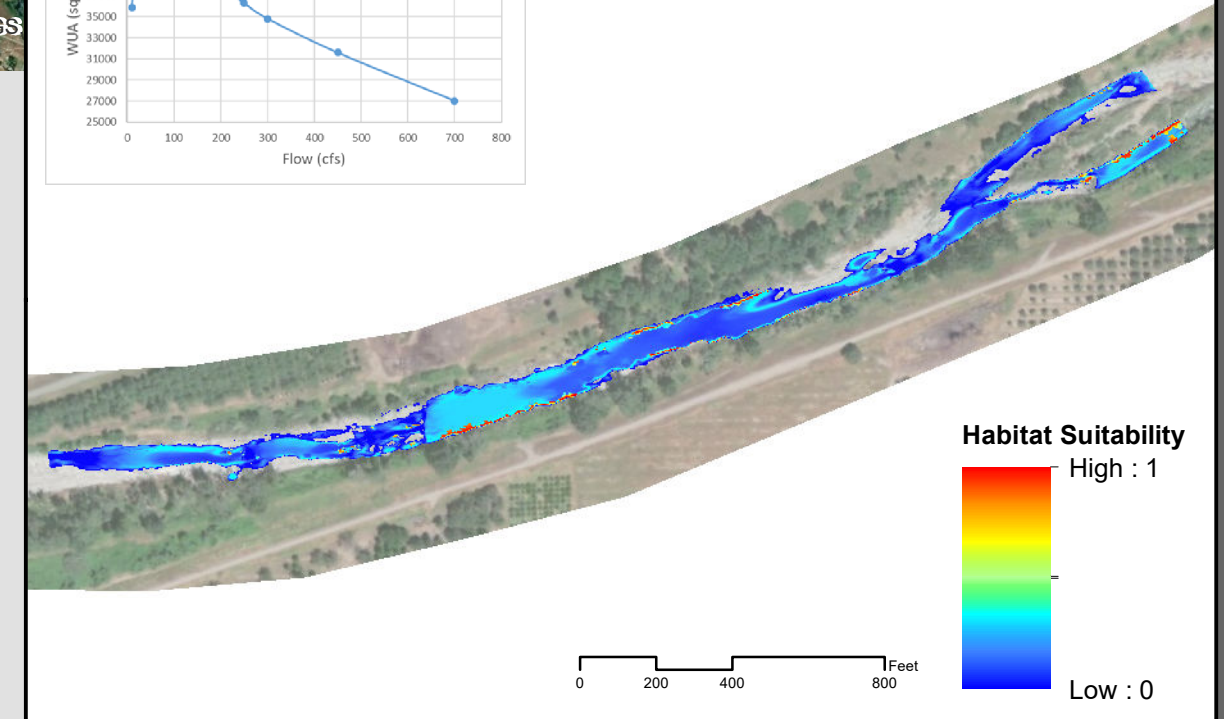
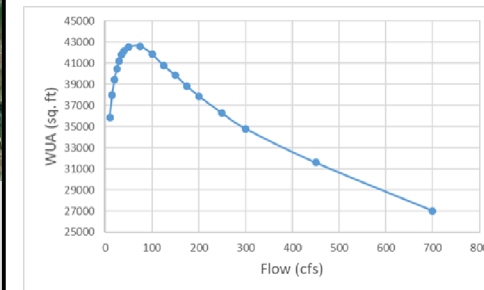
Spawning



Habitat Suitability
High : 1
Low : 0

0 205 410 820 Feet

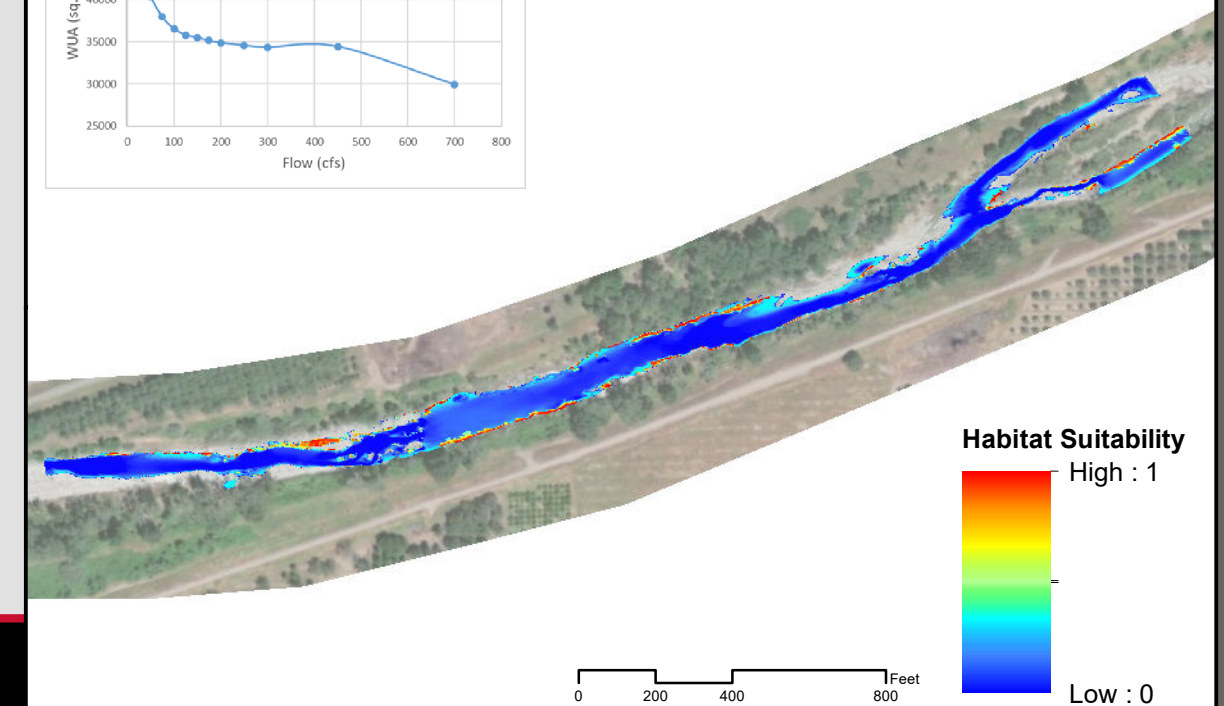
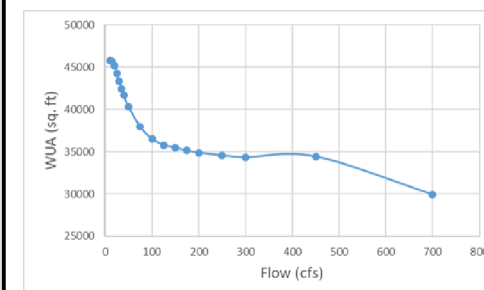
Juvenile



Habitat Suitability
High : 1
Low : 0

0 200 400 800 Feet

Fry



Habitat Suitability
High : 1
Low : 0

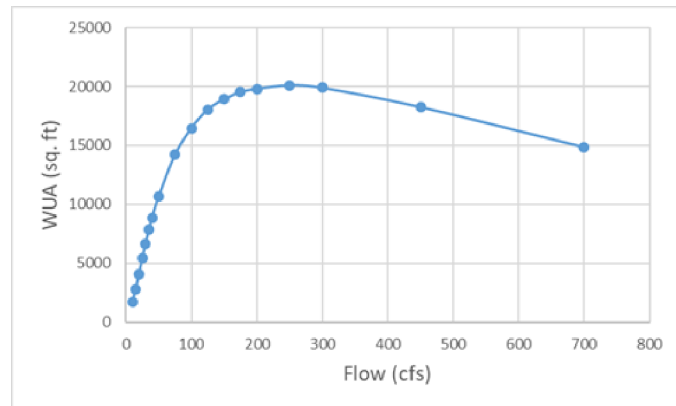
0 200 400 800 Feet

DRAFT

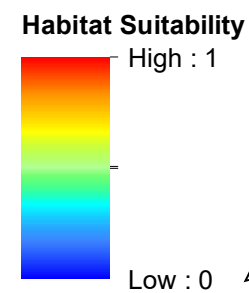
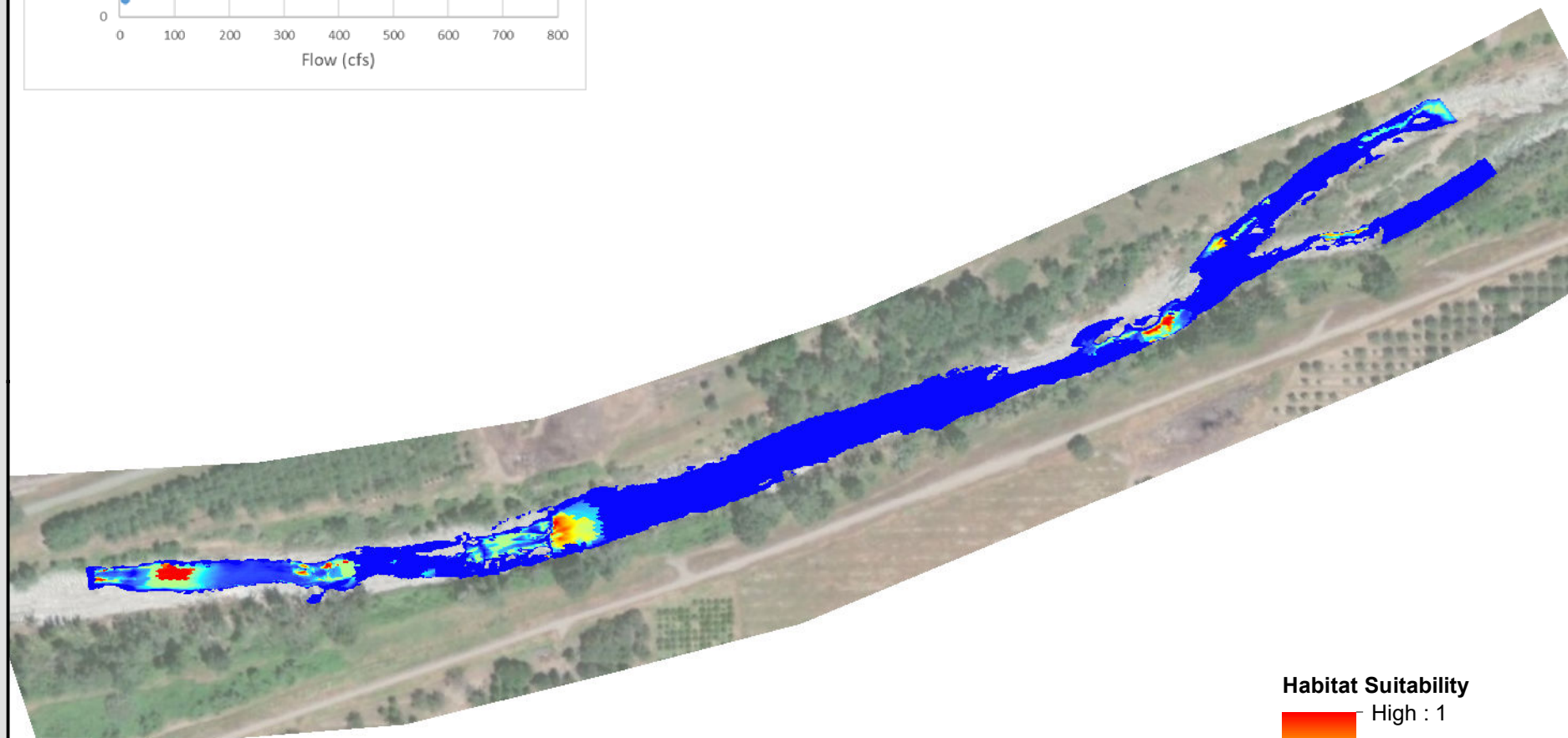
Lower Bear River - Instream Flow Study

SSWD HDR

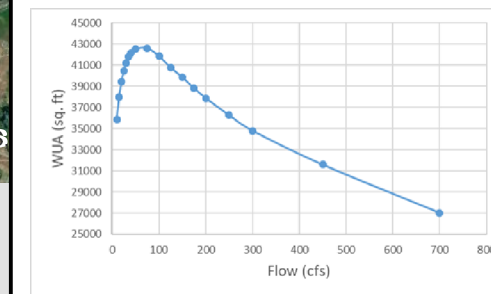
Fall-Run Chinook Salmon
Downstream Study Site 150 cfs



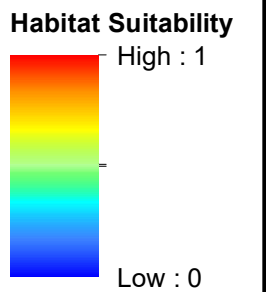
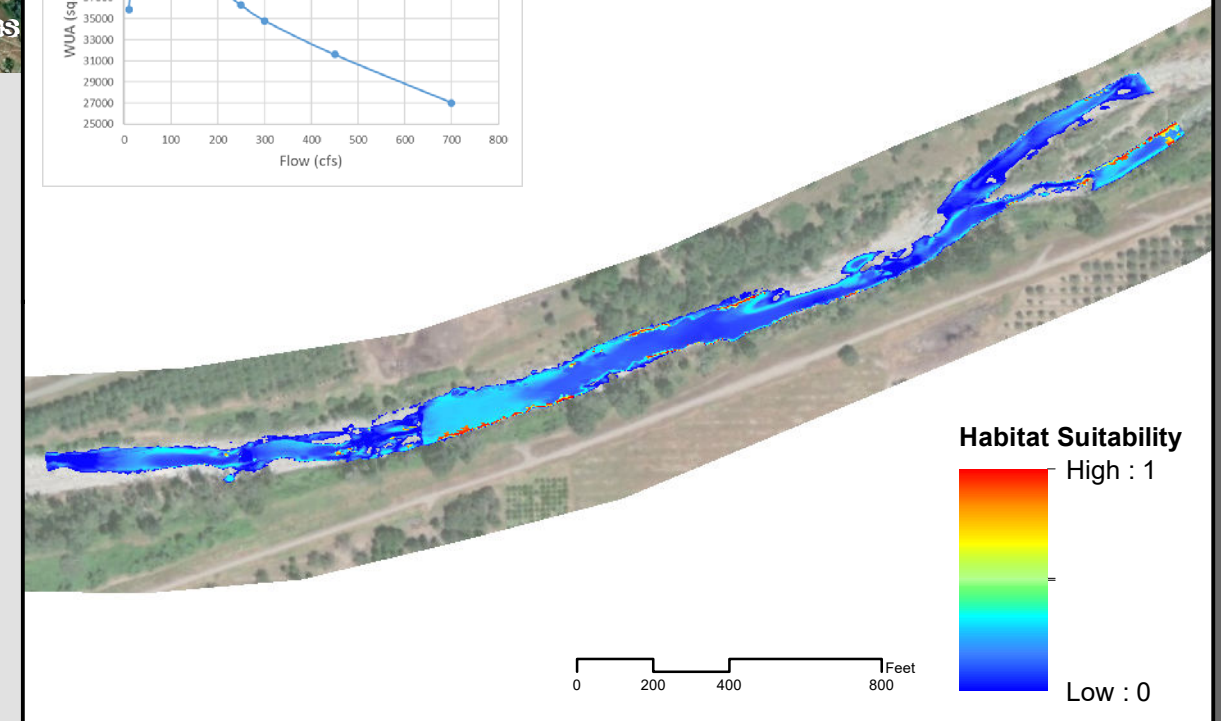
Spawning



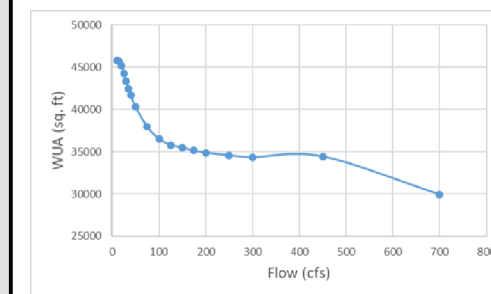
0 205 410 820 Feet



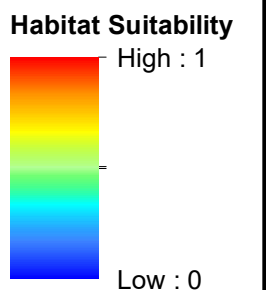
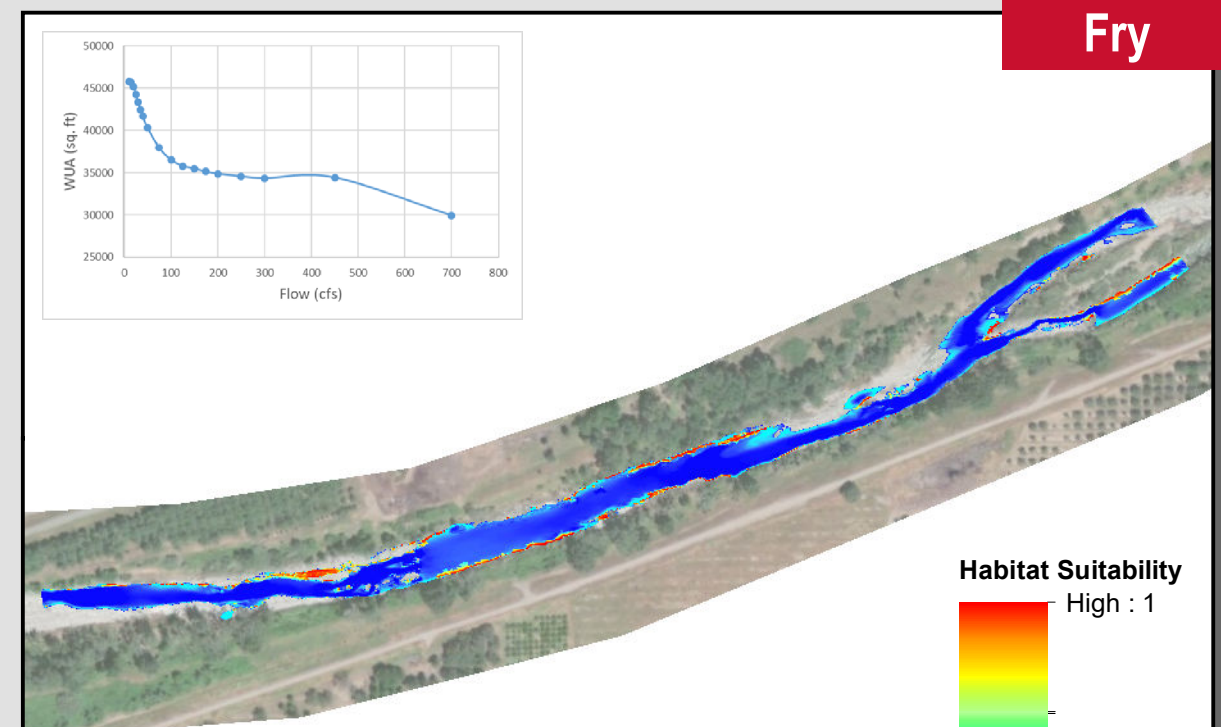
Juvenile



0 200 400 800 Feet



Fry



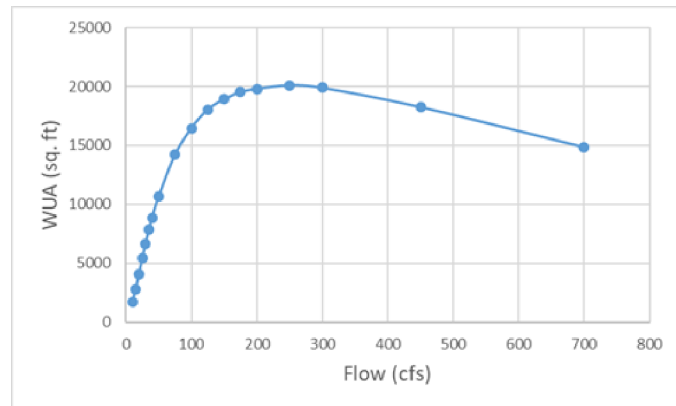
0 200 400 800 Feet

DRAFT

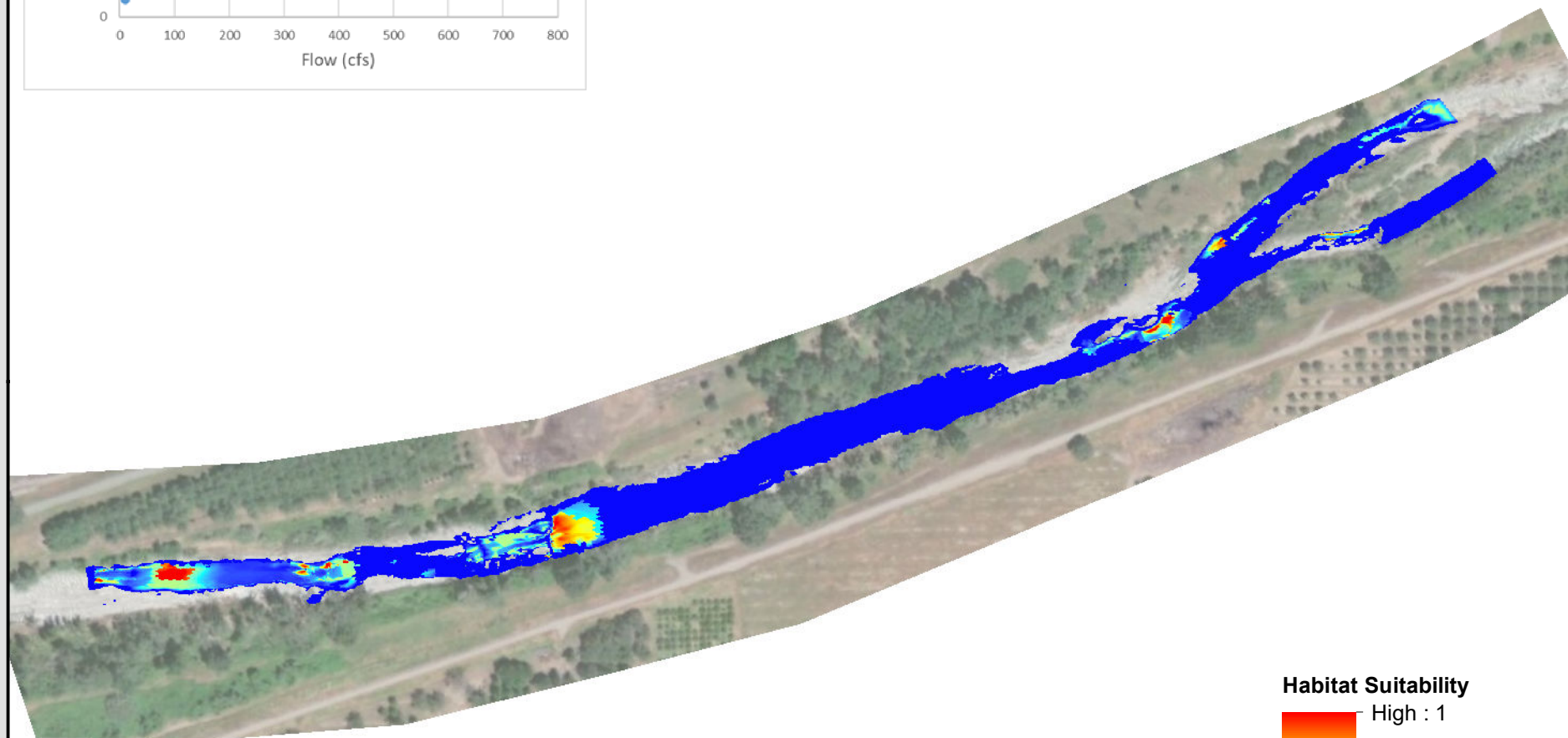
Lower Bear River - Instream Flow Study

SSWD HDR

Fall-Run Chinook Salmon
Downstream Study Site 175 cfs

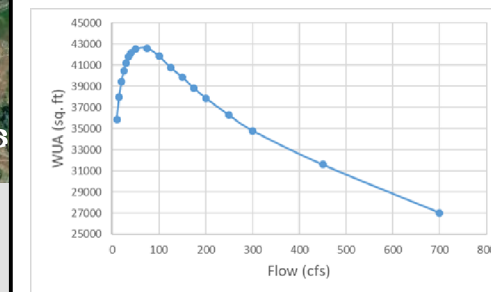


Spawning

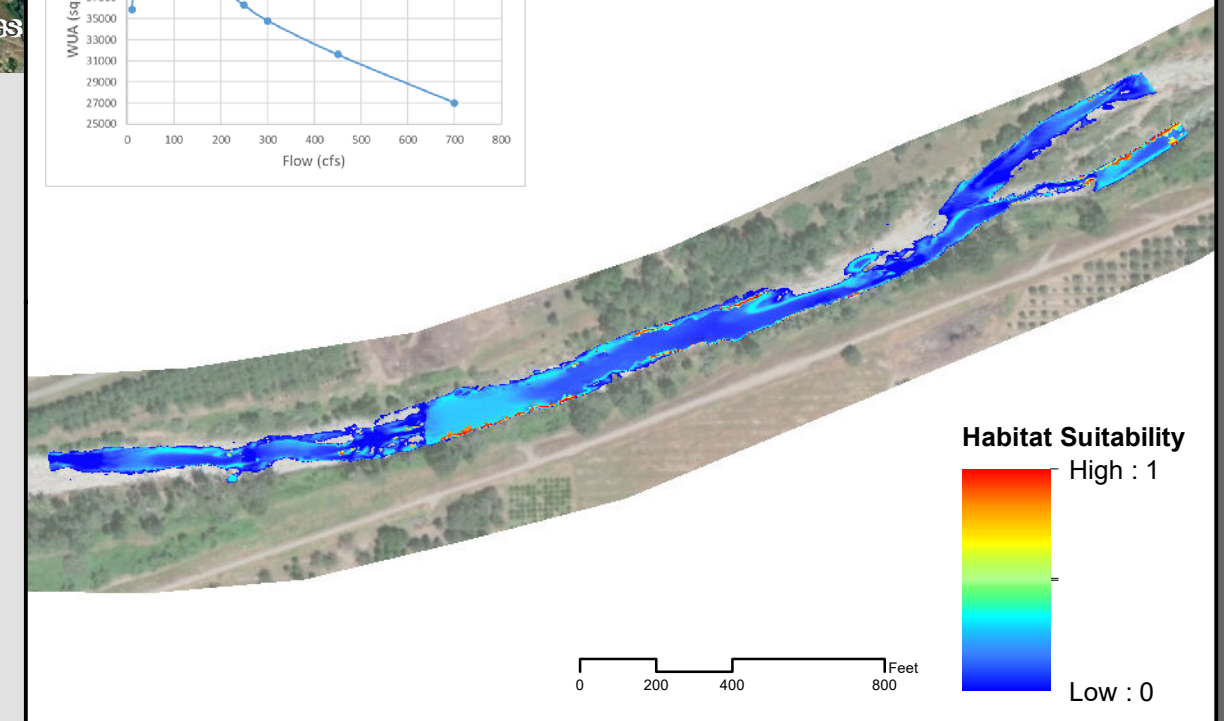


Habitat Suitability
High : 1
Low : 0

0 205 410 820 Feet

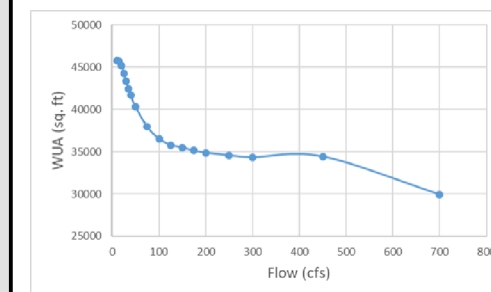


Juvenile

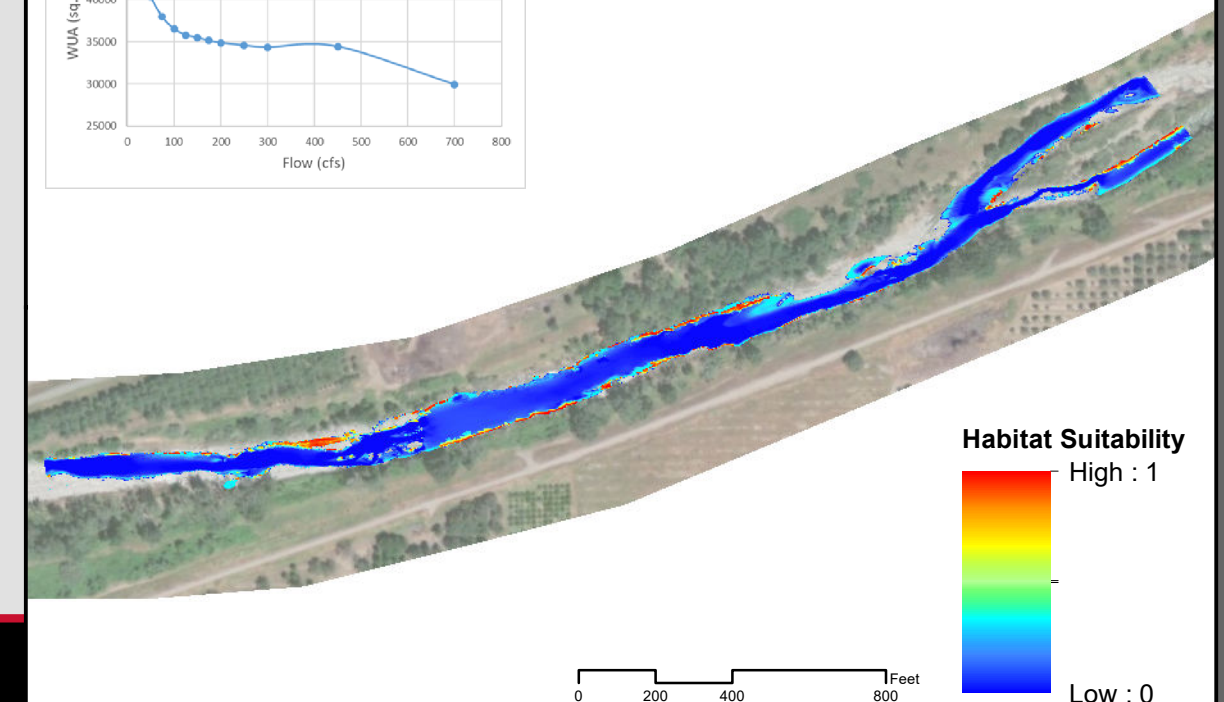


Habitat Suitability
High : 1
Low : 0

0 200 400 800 Feet



Fry



Habitat Suitability
High : 1
Low : 0

0 200 400 800 Feet

DRAFT

Lower Bear River - Instream Flow Study

SSWD HDR

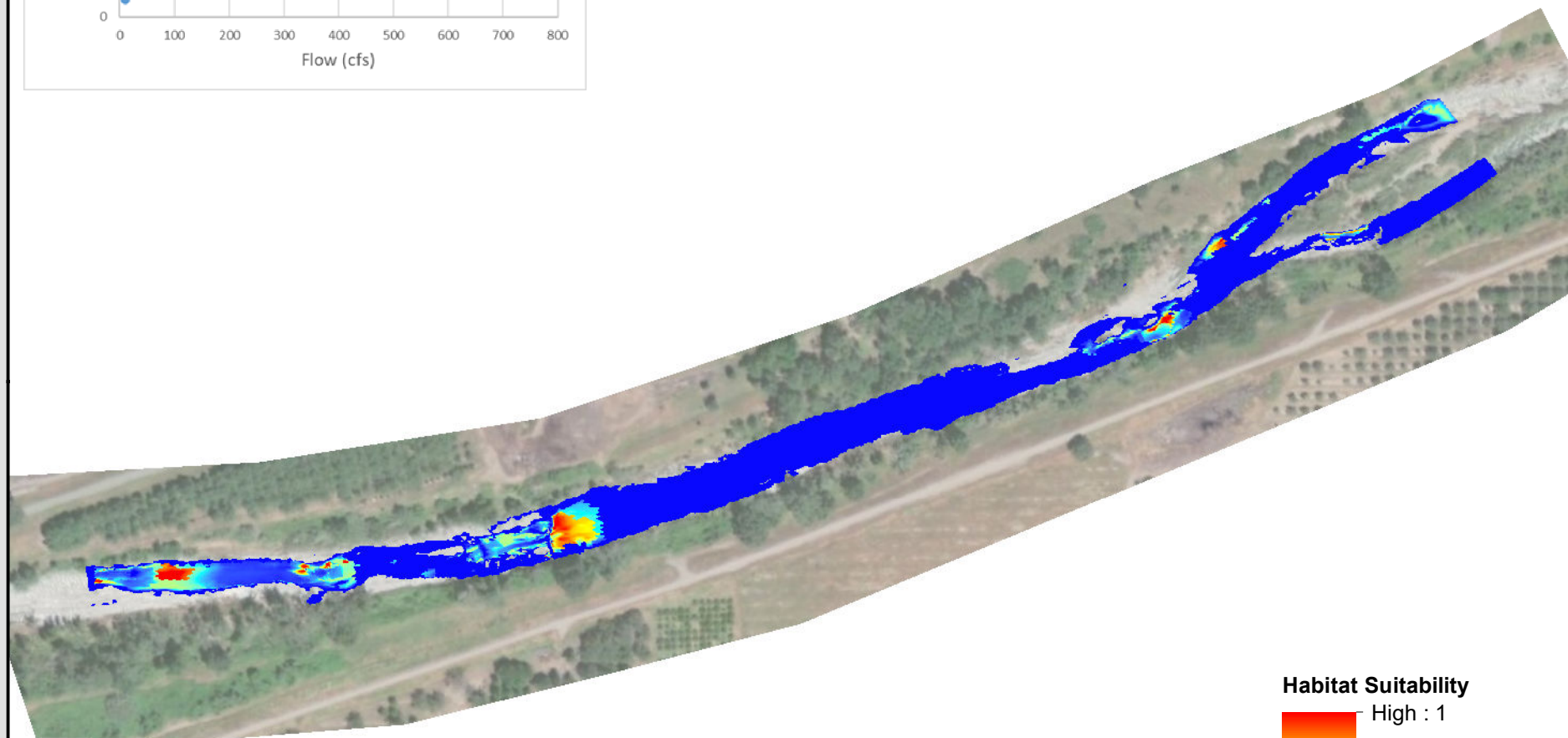
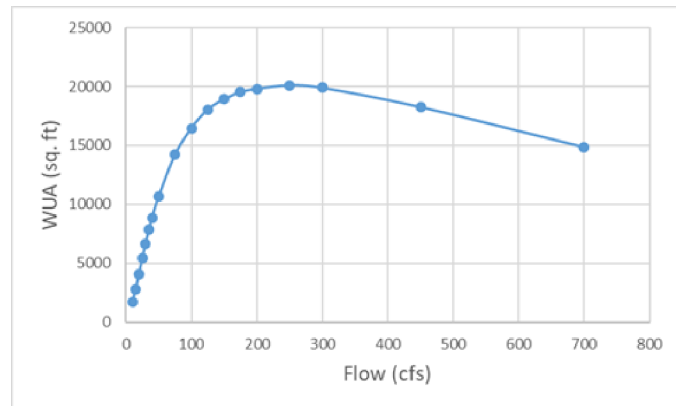
Fall-Run Chinook Salmon
Downstream Study Site 200 cfs



Downstream Site

Upstream Site

Spawning



Habitat Suitability

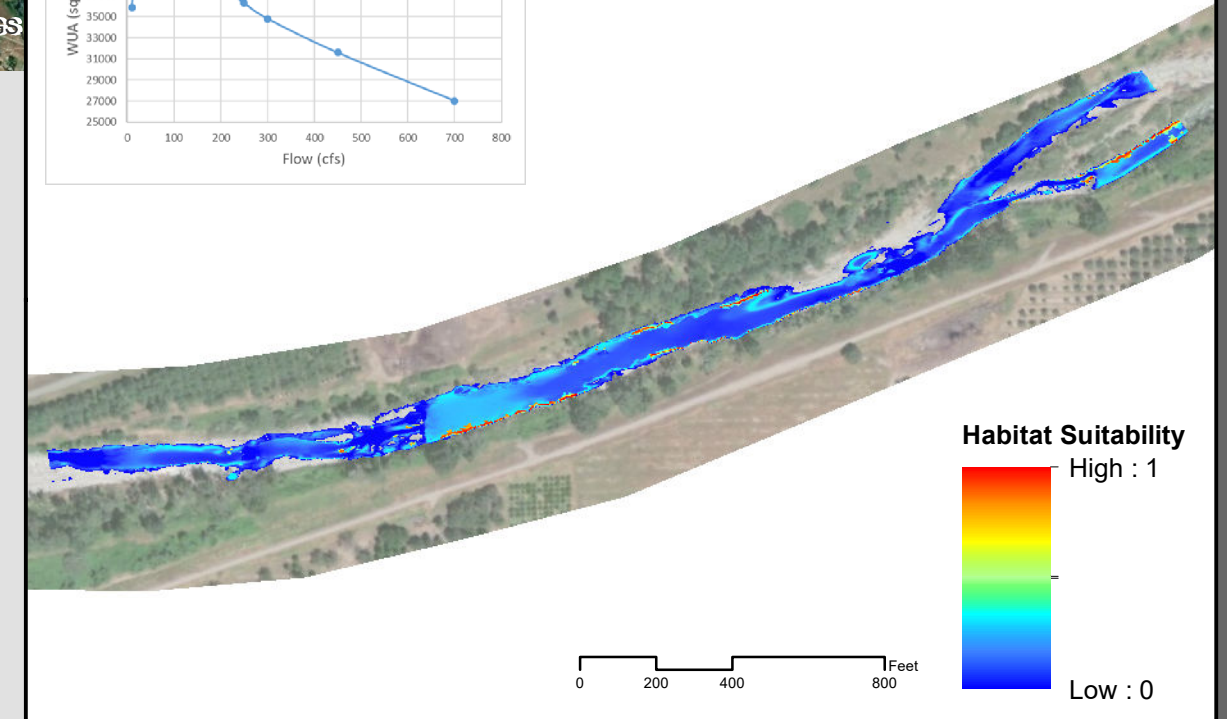
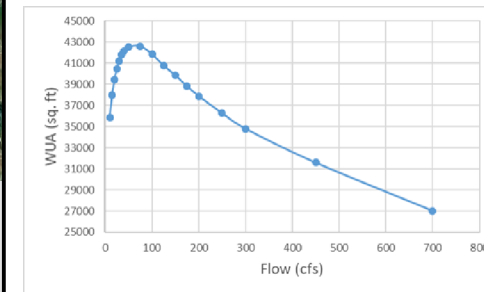
High : 1

Low : 0



0 205 410 820 Feet

Juvenile



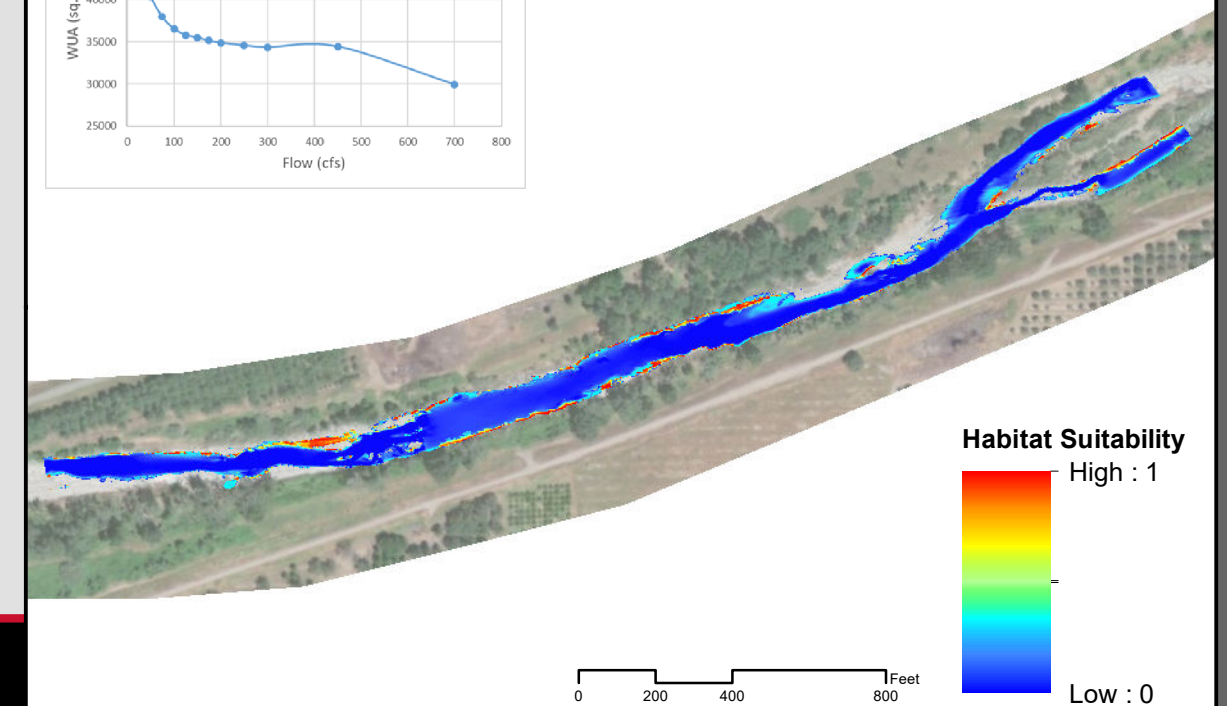
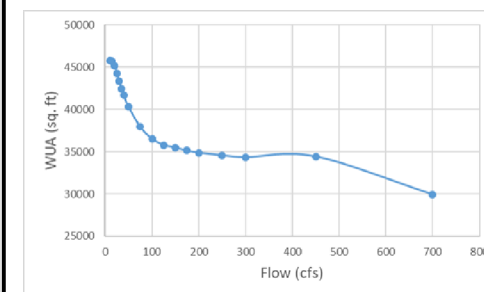
Habitat Suitability

High : 1

Low : 0

0 200 400 800 Feet

Fry



Habitat Suitability

High : 1

Low : 0

0 200 400 800 Feet

DRAFT

Lower Bear River - Instream Flow Study

SSWD HDR

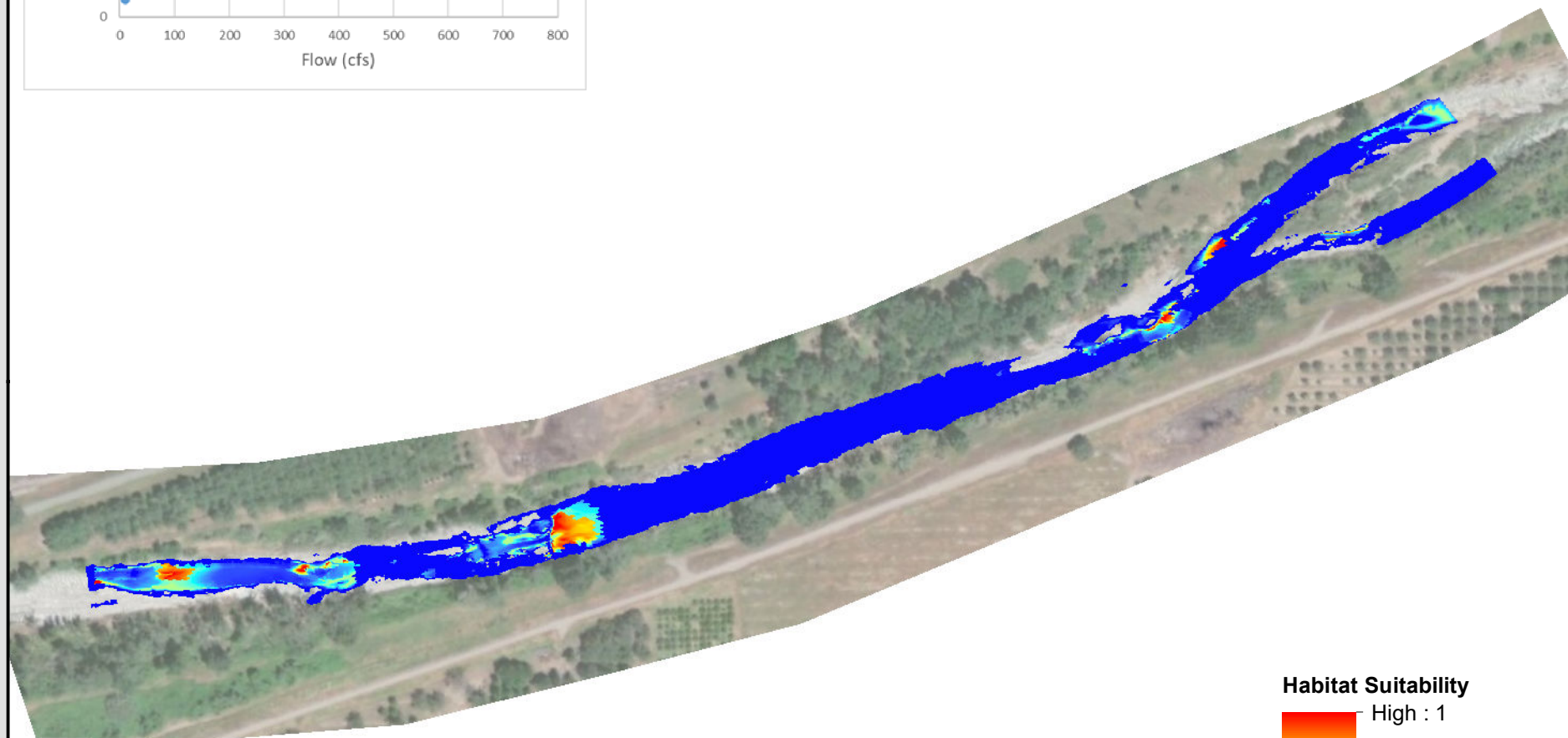
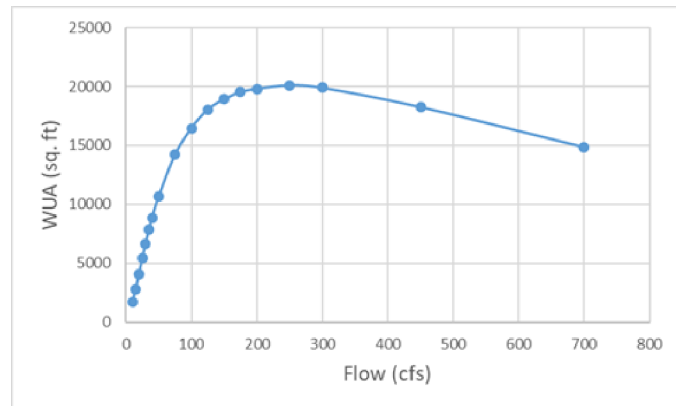
Fall-Run Chinook Salmon
Downstream Study Site 250 cfs



Downstream Site

Upstream Site

Spawning



Habitat Suitability

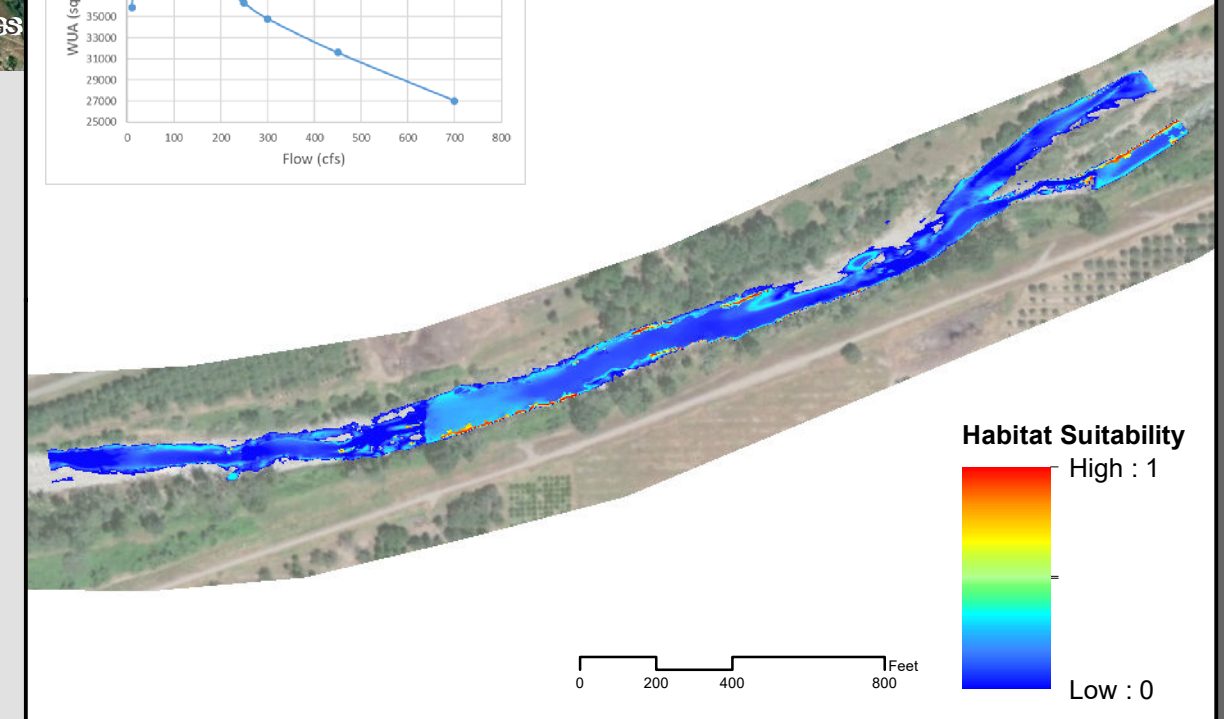
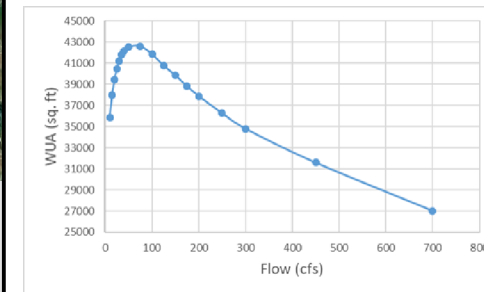
High : 1

Low : 0



0 205 410 820 Feet

Juvenile

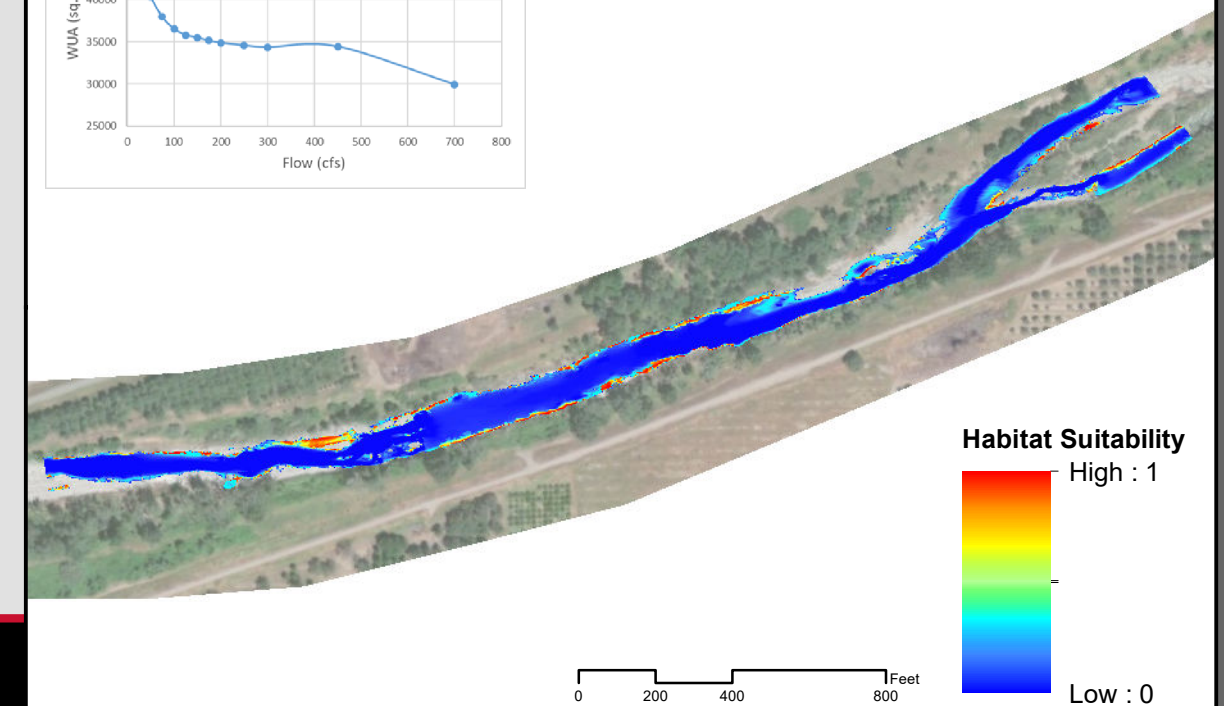
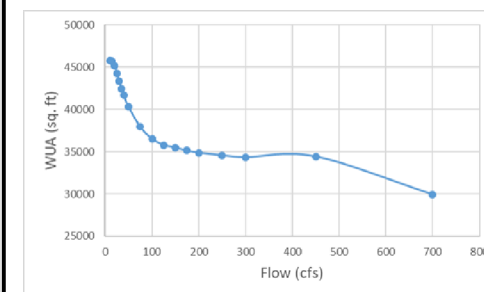


Habitat Suitability

High : 1

Low : 0

Fry



Habitat Suitability

High : 1

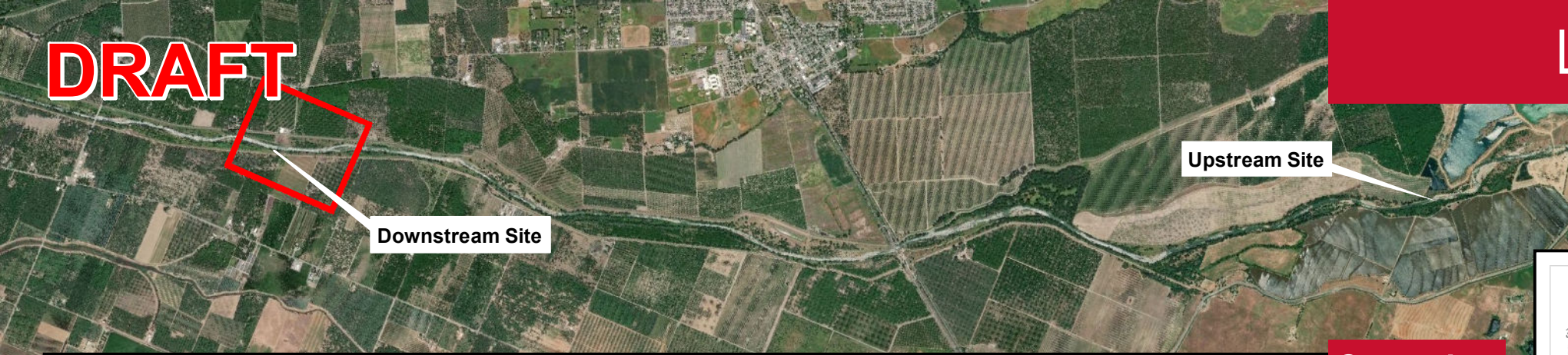
Low : 0

DRAFT

Lower Bear River - Instream Flow Study

SSWD HDR

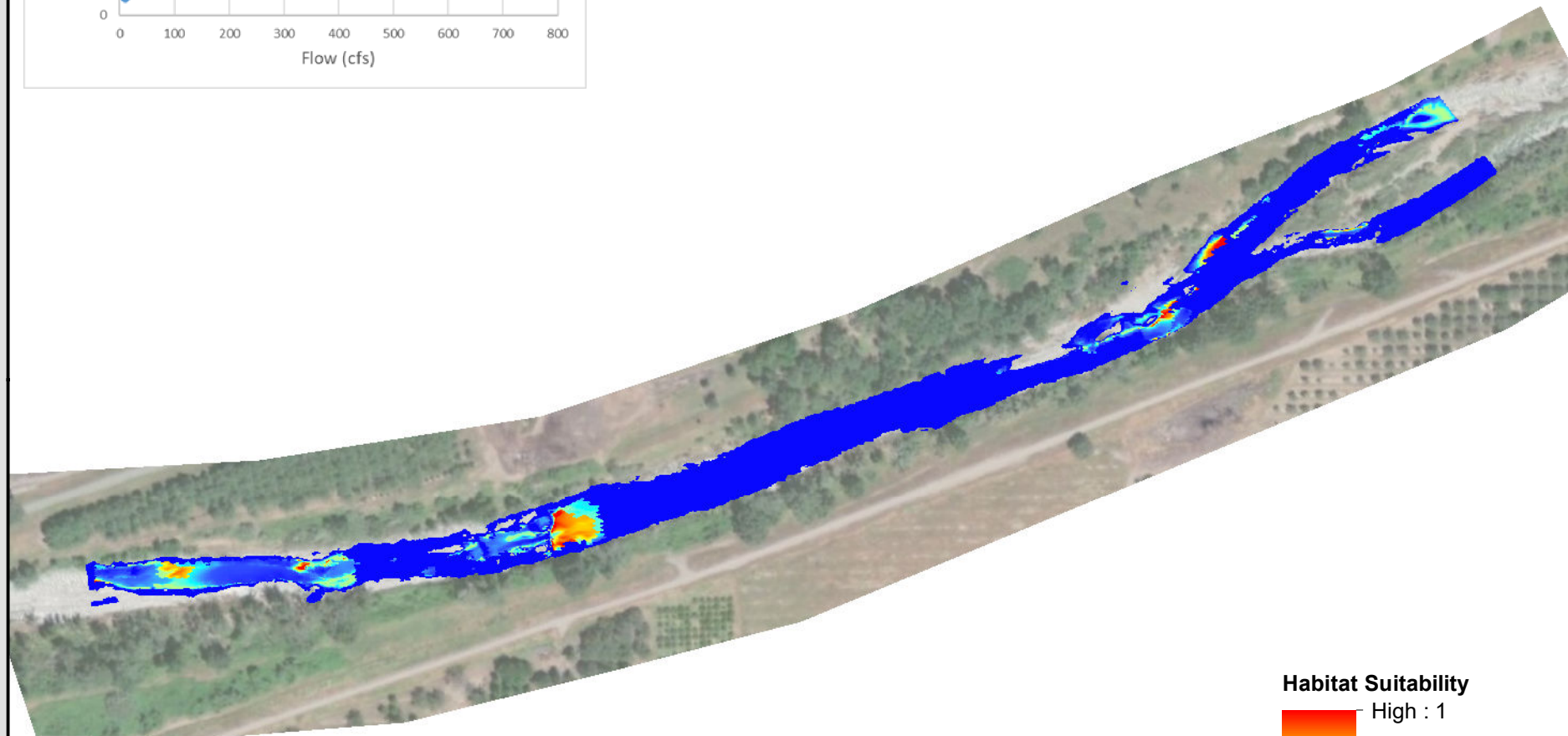
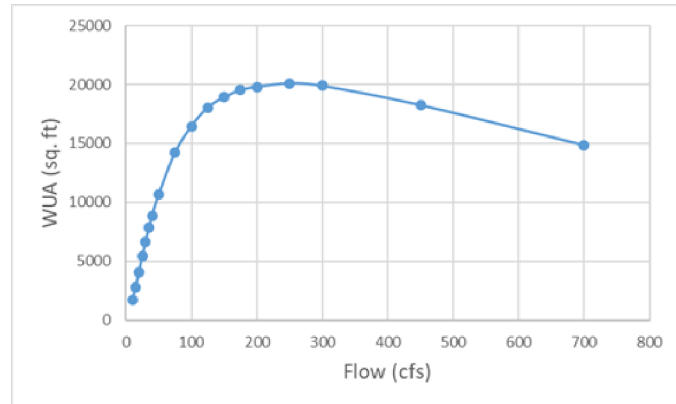
Fall-Run Chinook Salmon
Downstream Study Site 300 cfs



Downstream Site

Upstream Site

Spawning



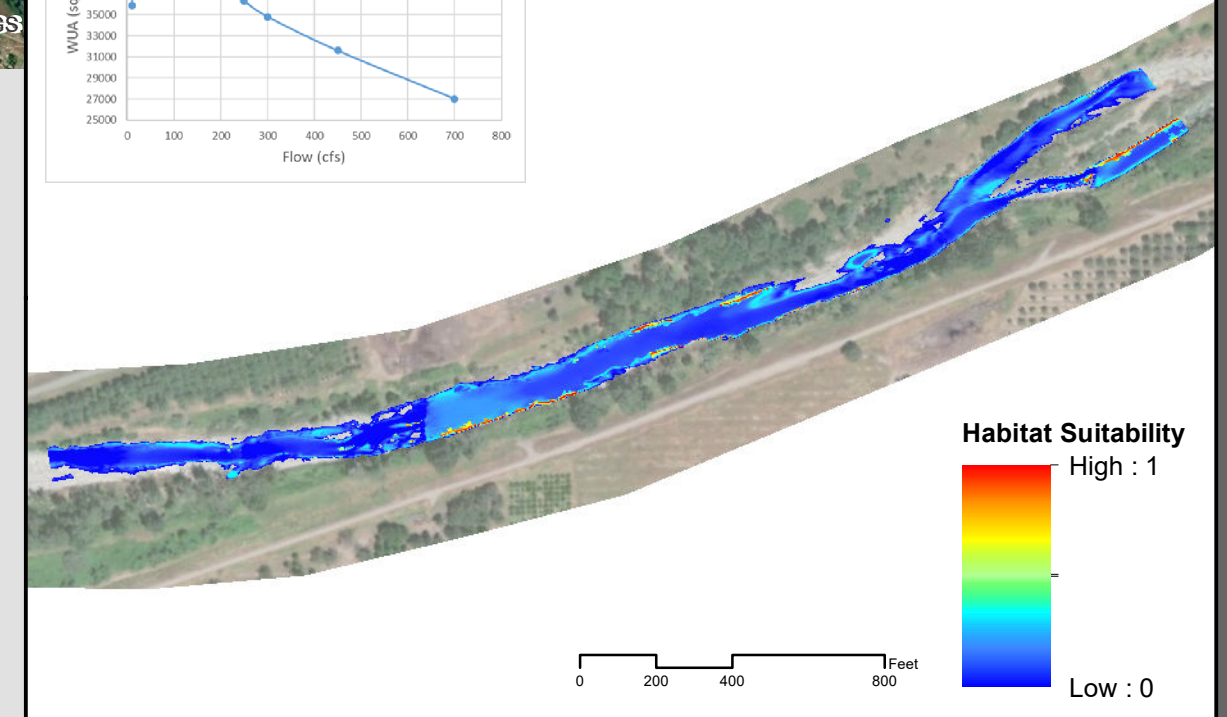
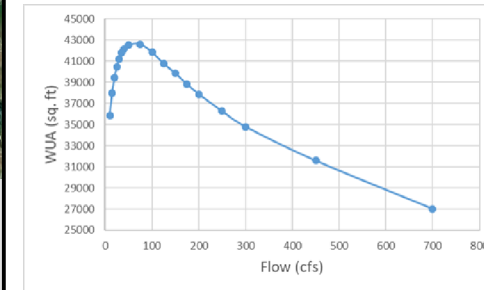
Habitat Suitability

High : 1

Low : 0

0 205 410 820 Feet

Juvenile



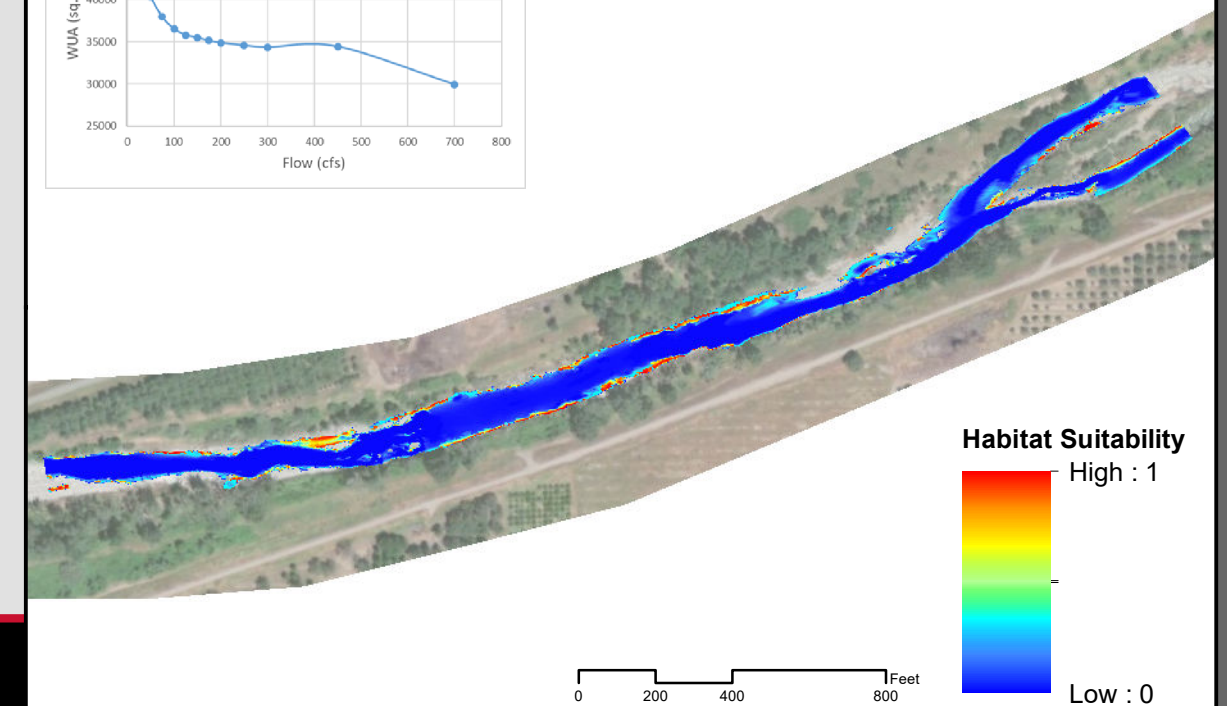
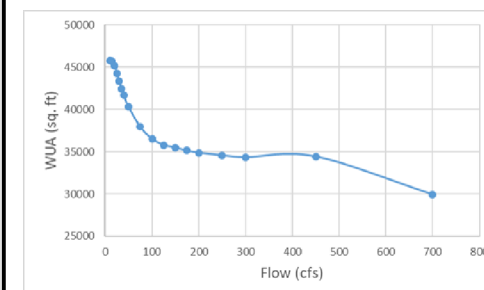
Habitat Suitability

High : 1

Low : 0

0 200 400 800 Feet

Fry



Habitat Suitability

High : 1

Low : 0

0 200 400 800 Feet

DRAFT

Lower Bear River - Instream Flow Study

SSWD HDR

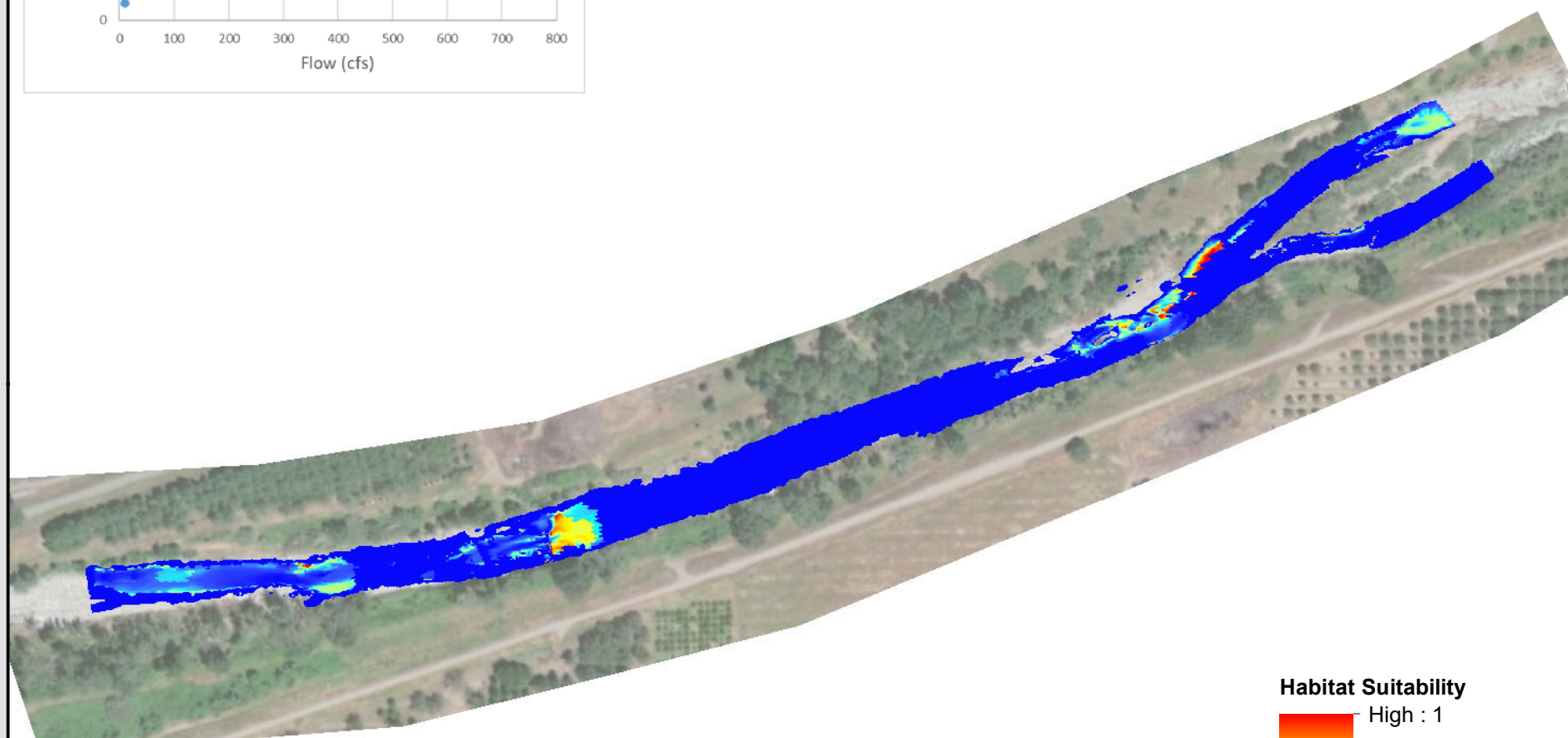
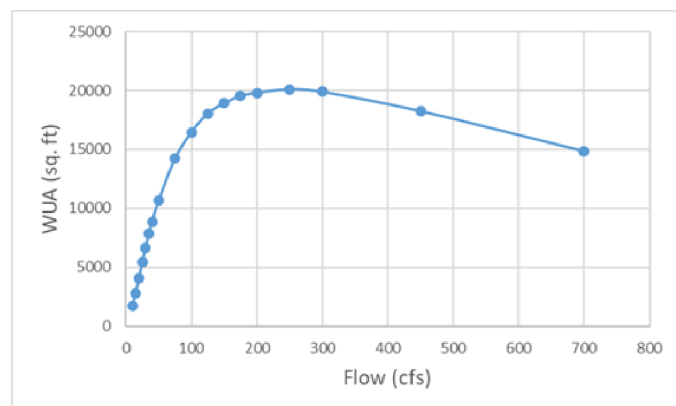
Fall-Run Chinook Salmon
Downstream Study Site 450 cfs



Downstream Site

Upstream Site

Spawning

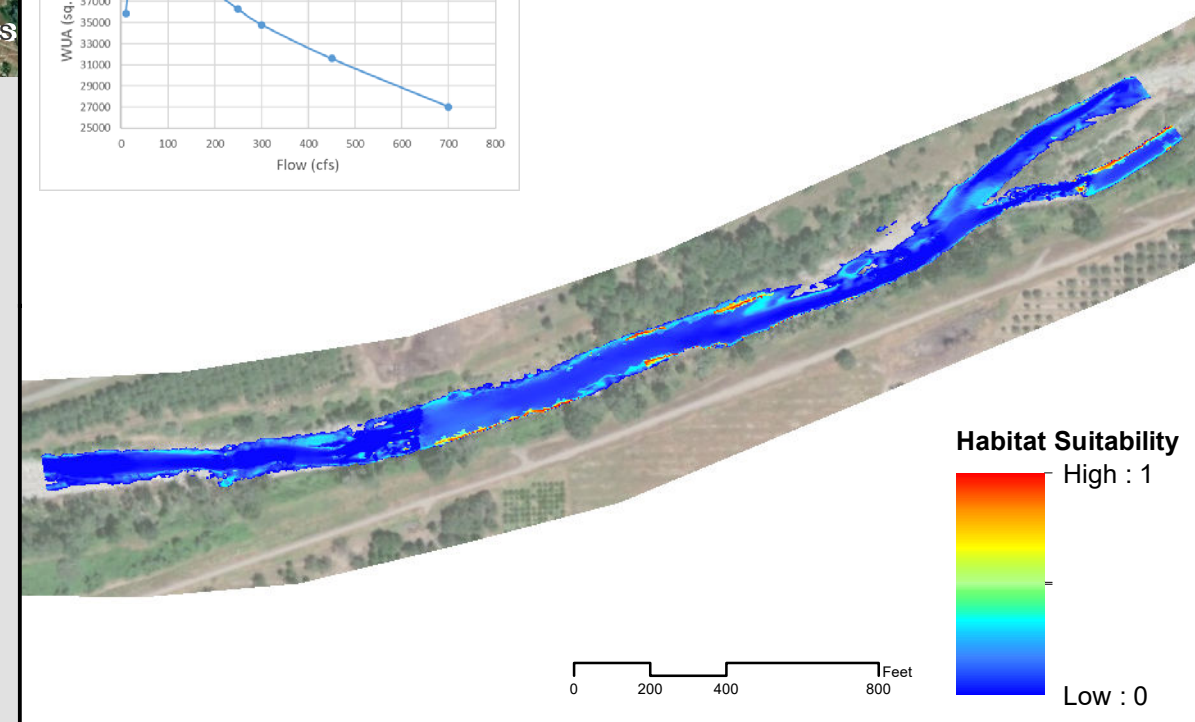
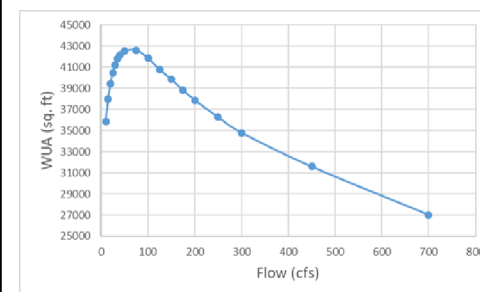


Habitat Suitability
High : 1
Low : 0



0 205 410 820 Feet

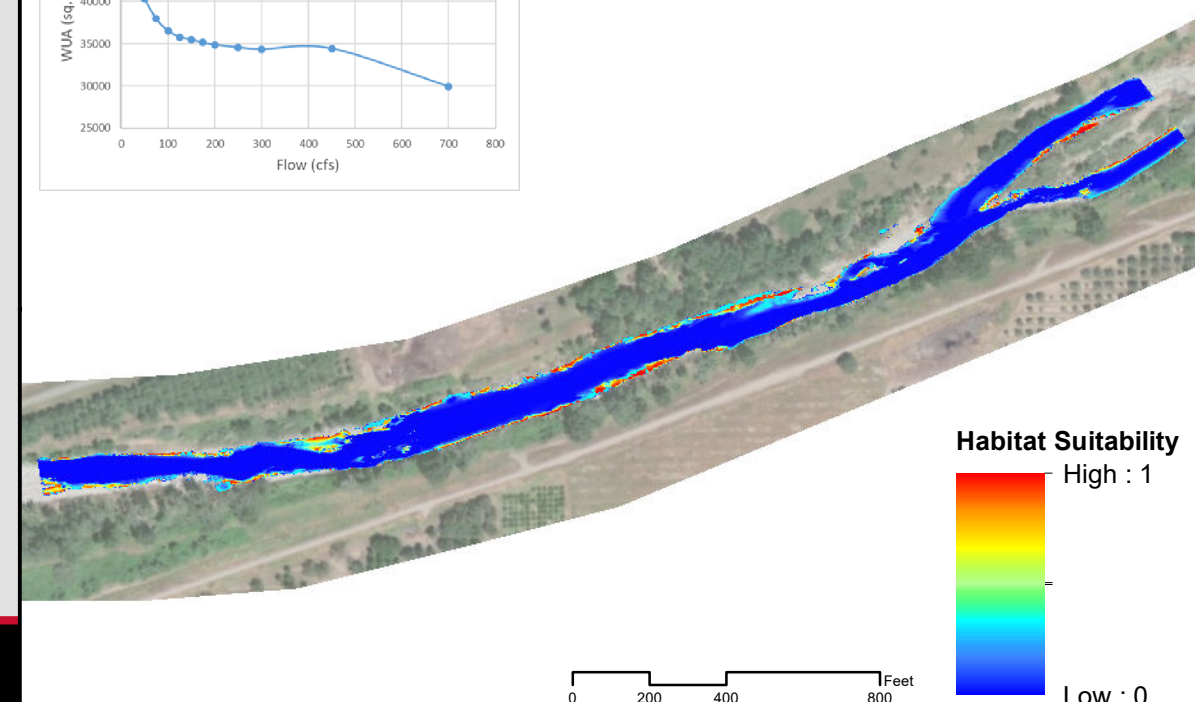
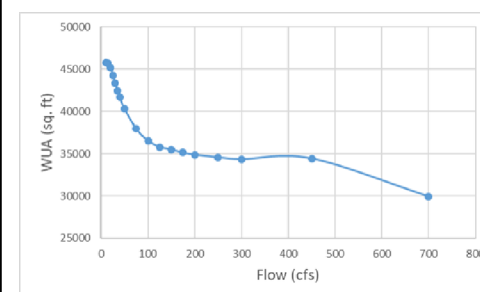
Juvenile



Habitat Suitability
High : 1
Low : 0

0 200 400 800 Feet

Fry



Habitat Suitability
High : 1
Low : 0

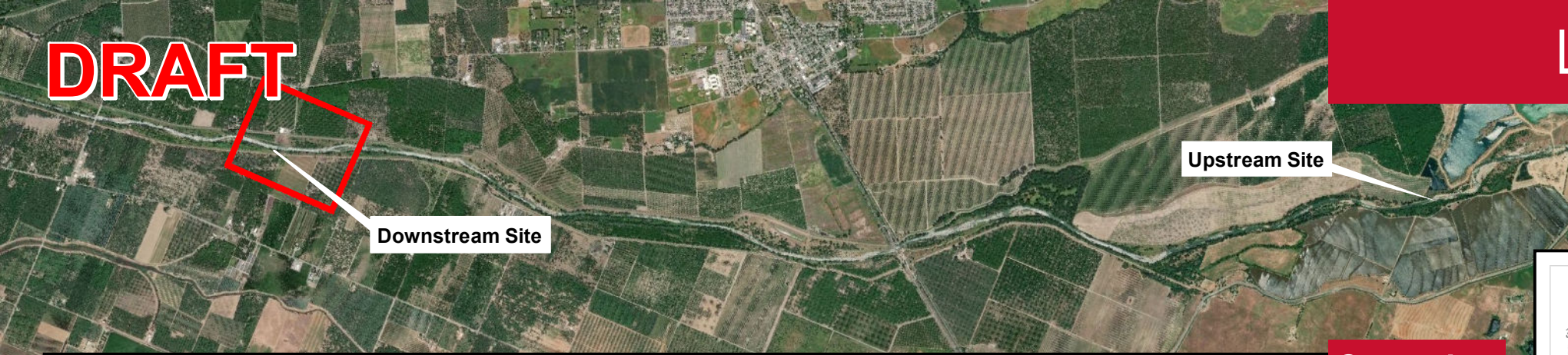
0 200 400 800 Feet

DRAFT

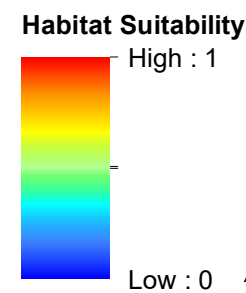
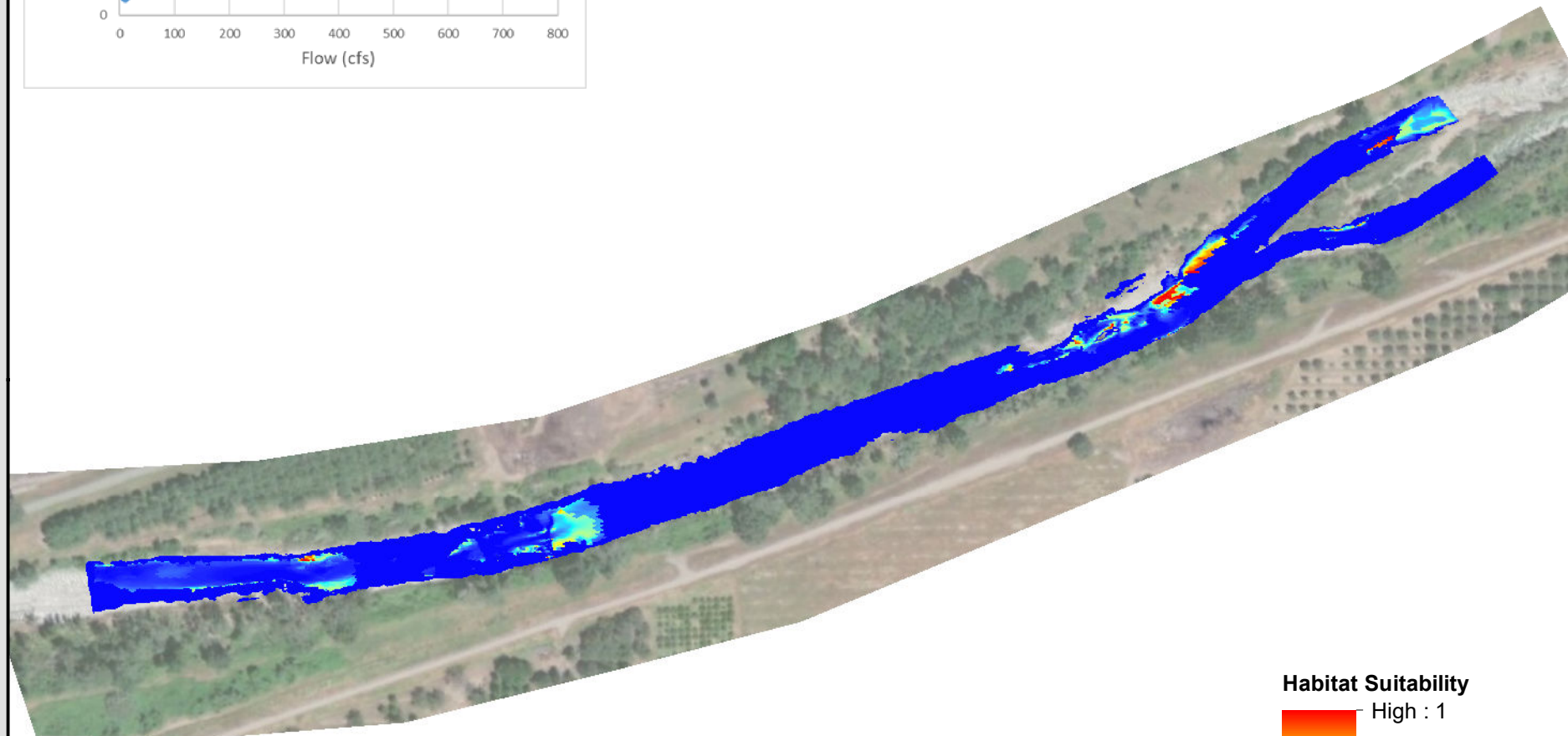
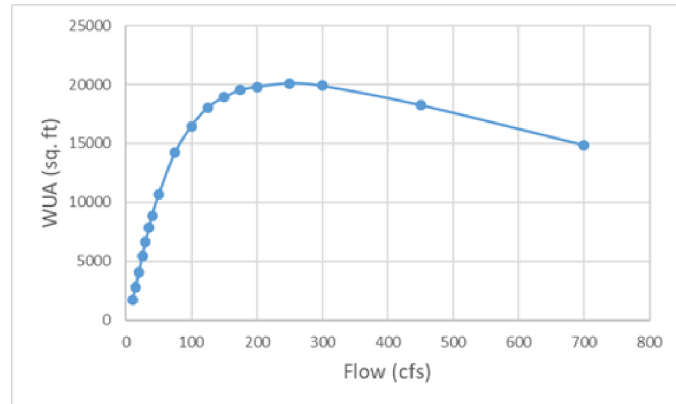
Lower Bear River - Instream Flow Study

SSWD HDR

Fall-Run Chinook Salmon
Downstream Study Site 700 cfs



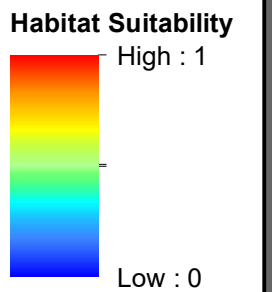
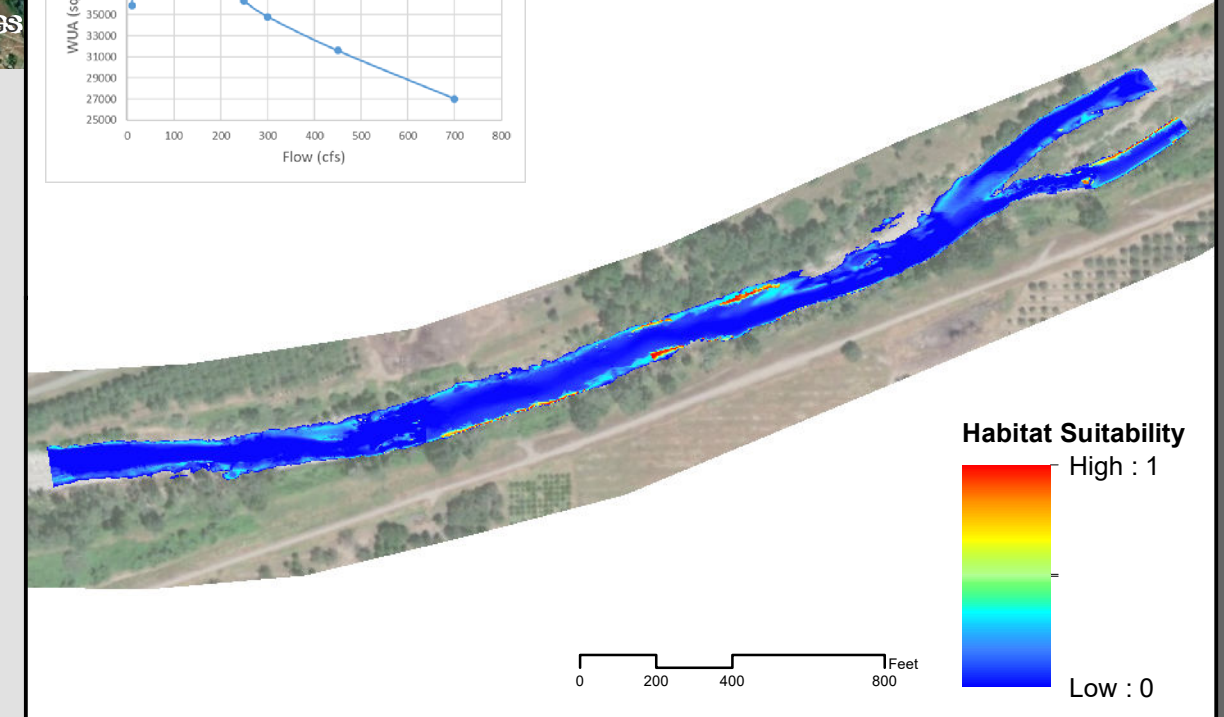
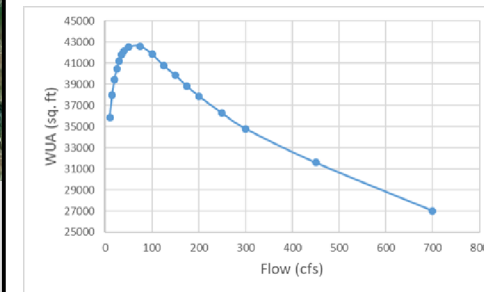
Spawning



0 205 410 820 Feet

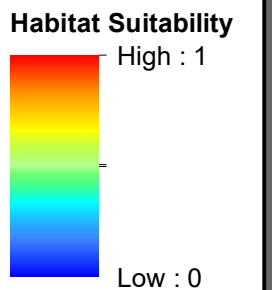
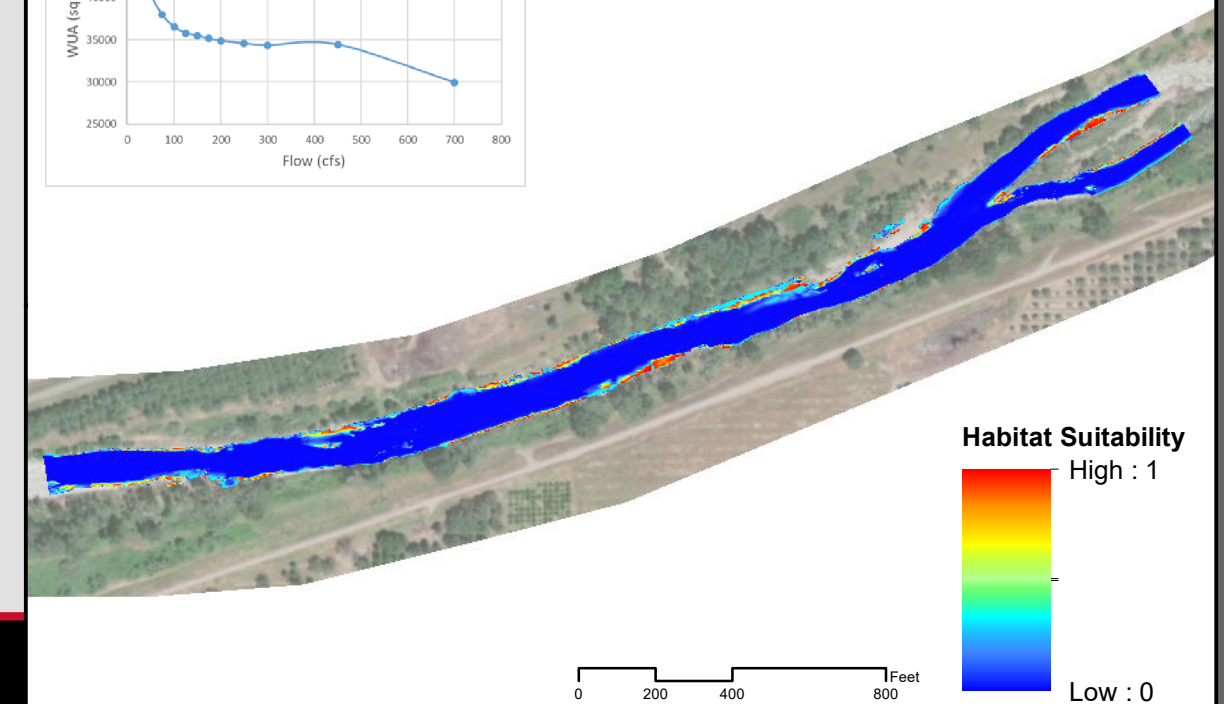
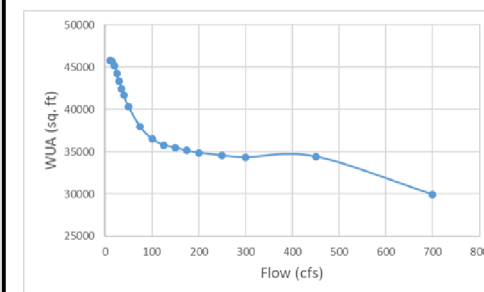


Juvenile



0 200 400 800 Feet

Fry



0 200 400 800 Feet