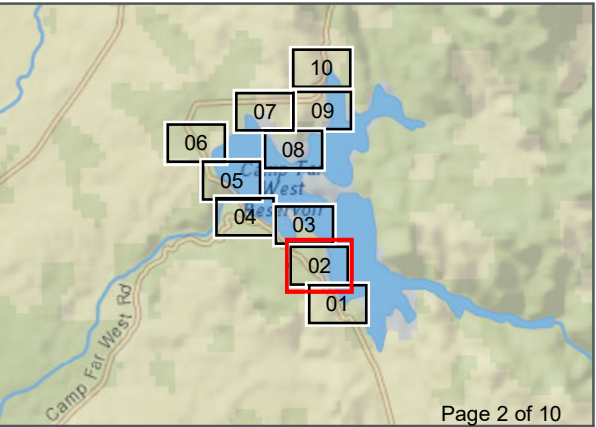


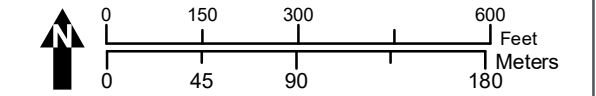
Map Prepared by: HDR | © 2018 South Sutter Water District



- Project Features**
- FERC Boundary (No.2997)
 - Recreation Site Area
- Non-Project Features**
- Transmission Line

- Base Map**
- Major Road
 - Minor Road
 - County Line
 - Study Area

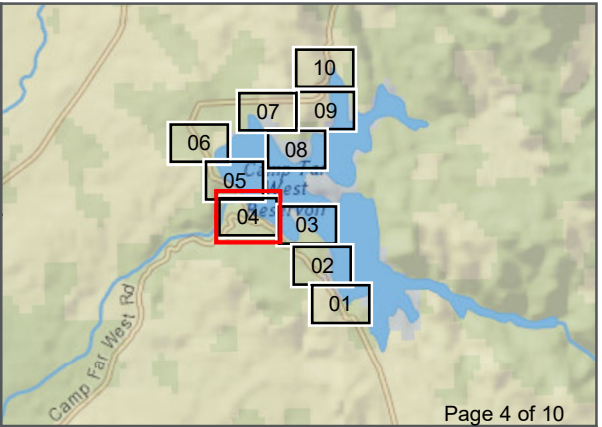
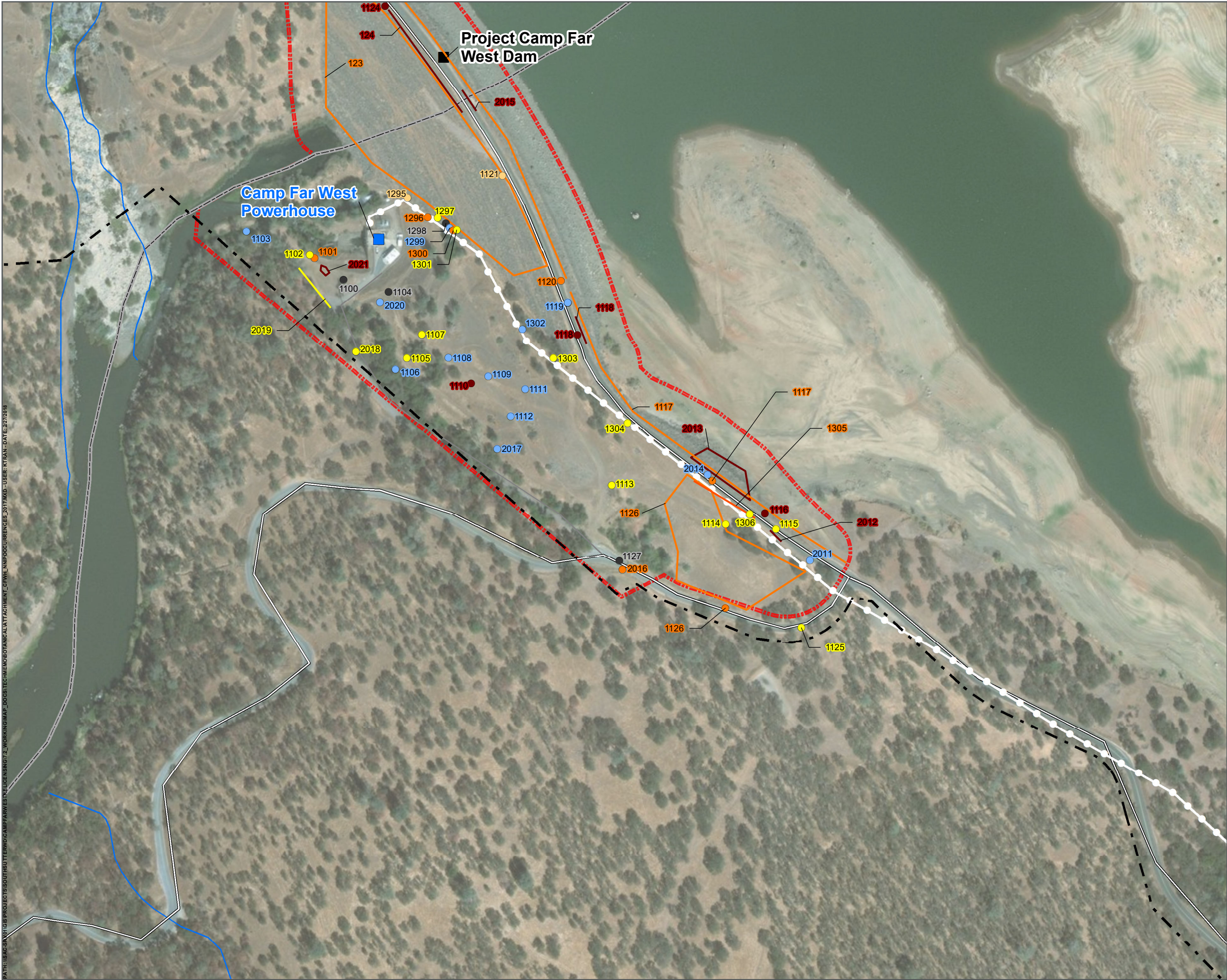
- Non-native Plant Species (NNIP)**
- Carduus pycnocephalus* (CARPYC)
 - Centaurea solstitialis* (CENSOL)
 - Cynodon dactylon* (CYNDAC)
 - Elymus caput-medusae* (ELYCAP)
 - Hypericum perforatum* (HYPPER)
- Carduus pycnocephalus* (CARPYC)
- Cynodon dactylon* (CYNDAC)
- Hypericum perforatum* (HYPPER)
- Elymus caput-medusae* (ELYCAP)



**CAMP FAR WEST HYDROELECTRIC PROJECT
NON-NATIVE INVASIVE PLANT SPECIES
FERC NO. 2997**

Data Sources: Base Map - ArcGIS Online Streaming Layer (Imagery); Ferc Boundary - Yuba and Placer Counties GIS; Land Ownership - Yuba and Placer Counties CD-Data; Botanical Survey Area, Non-native Plant Species - HDR. Map information was compiled from the best available sources. No warranty is made for its accuracy or completeness.

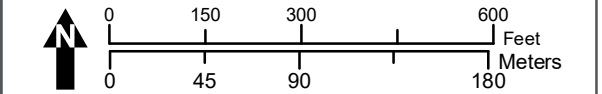
Map Prepared by: HDR | © 2018 South Sutter Water District



- Project Features**
- FERC Boundary (No.2997)
 - Dam
 - PowerHouse
- Non-Project Features**
- Transmission Line

- Base Map**
- Major Road
 - Minor Road
 - Stream/River
 - County Line
 - Study Area

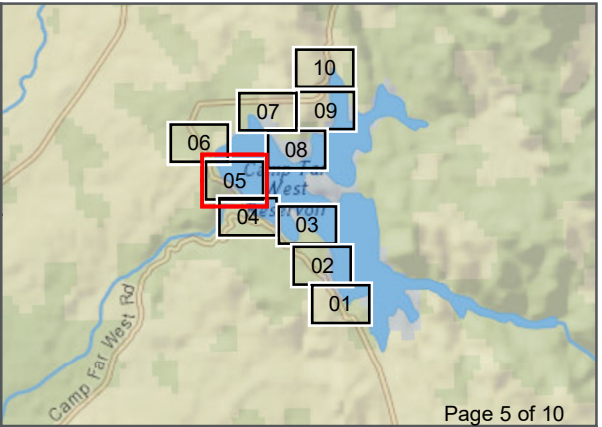
- Non-native Plant Species (NNIP)**
- Carduus pycnocephalus* (CARPYC)
 - Centaurea solstitialis* (CENSOL)
 - Chondrilla juncea* (CHOJUN)
 - Cynodon dactylon* (CYNDAC)
 - Elymus caput-medusae* (ELYCAP)
 - Hypericum perforatum* (HYPPER)
- Carduus pycnocephalus* (CARPYC)
- Centaurea solstitialis* (CENSOL)
- Chondrilla juncea* (CHOJUN)



**CAMP FAR WEST HYDROELECTRIC PROJECT
NON-NATIVE INVASIVE PLANT SPECIES
FERC NO. 2997**

Data Sources: Base Map - ArcGIS Online Streaming Layer (Imagery); Ferc Boundary - Yuba and Placer Counties GIS; Land Ownership - Yuba and Placer Counties CD-Data; Botanical Survey Area, Non-native Plant Species - HDR. Map information was compiled from the best available sources. No warranty is made for its accuracy or completeness.

Map Prepared by: HDR | © 2018 South Sutter Water District



Project Features **Non-Project Features**

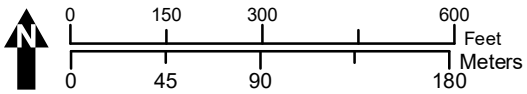
- FERC Boundary (No.2997) — Transmission Line
■ Dam
■ PowerHouse

Base Map

- Major Road — County Line
— Minor Road ■ Study Area
— Stream/River

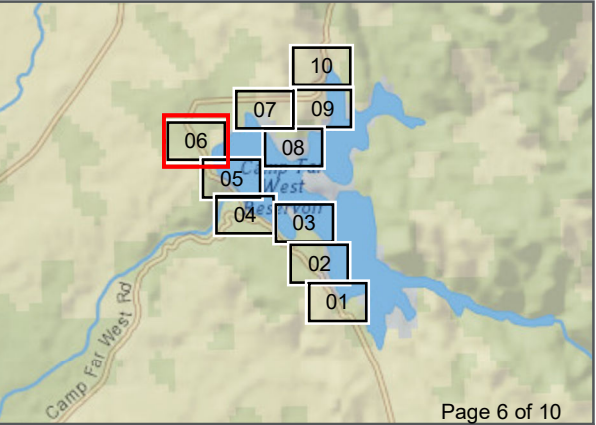
Non-native Plant Species (NNIP)

- *Carduus pycnocephalus* (CARPYC) ■ *Centaurea solstitialis* (CENSOL)
● *Centaurea solstitialis* (CENSOL) ■ *Chondrilla juncea* (CHOJUN)
● *Chondrilla juncea* (CHOJUN)
● *Cynodon dactylon* (CYNDAC)
● *Elymus caput-medusae* (ELYCAP)
● *Hypericum perforatum* (HYPPER)
— *Carduus pycnocephalus* (CARPYC)
— *Centaurea solstitialis* (CENSOL)
— *Chondrilla juncea* (CHOJUN)
— *Convolvulus arvensis* (CONARV)



**CAMP FAR WEST HYDROELECTRIC PROJECT
NON-NATIVE INVASIVE PLANT SPECIES
FERC NO. 2997**

Data Sources: Base Map - ArcGIS Online Streaming Layer (Imagery); Ferc Boundary - Yuba and Placer Counties GIS; Land Ownership - Yuba and Placer Counties CD-Data; Botanical Survey Area, Non-native Plant Species - HDR. Map information was compiled from the best available sources. No warranty is made for its accuracy or completeness.



Project Features

FERC Boundary (No.2997)

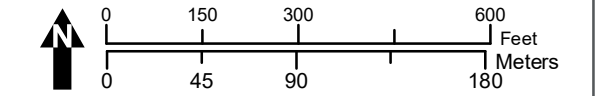
Non-Project Features

Base Map

- Major Road
- Minor Road
- Stream/River
- County Line
- Study Area

Non-native Plant Species (NNIP)

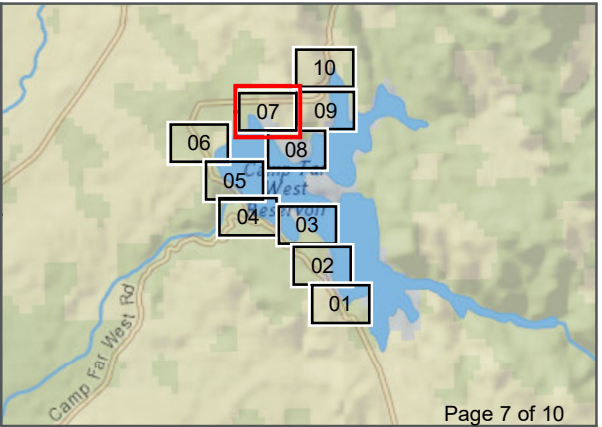
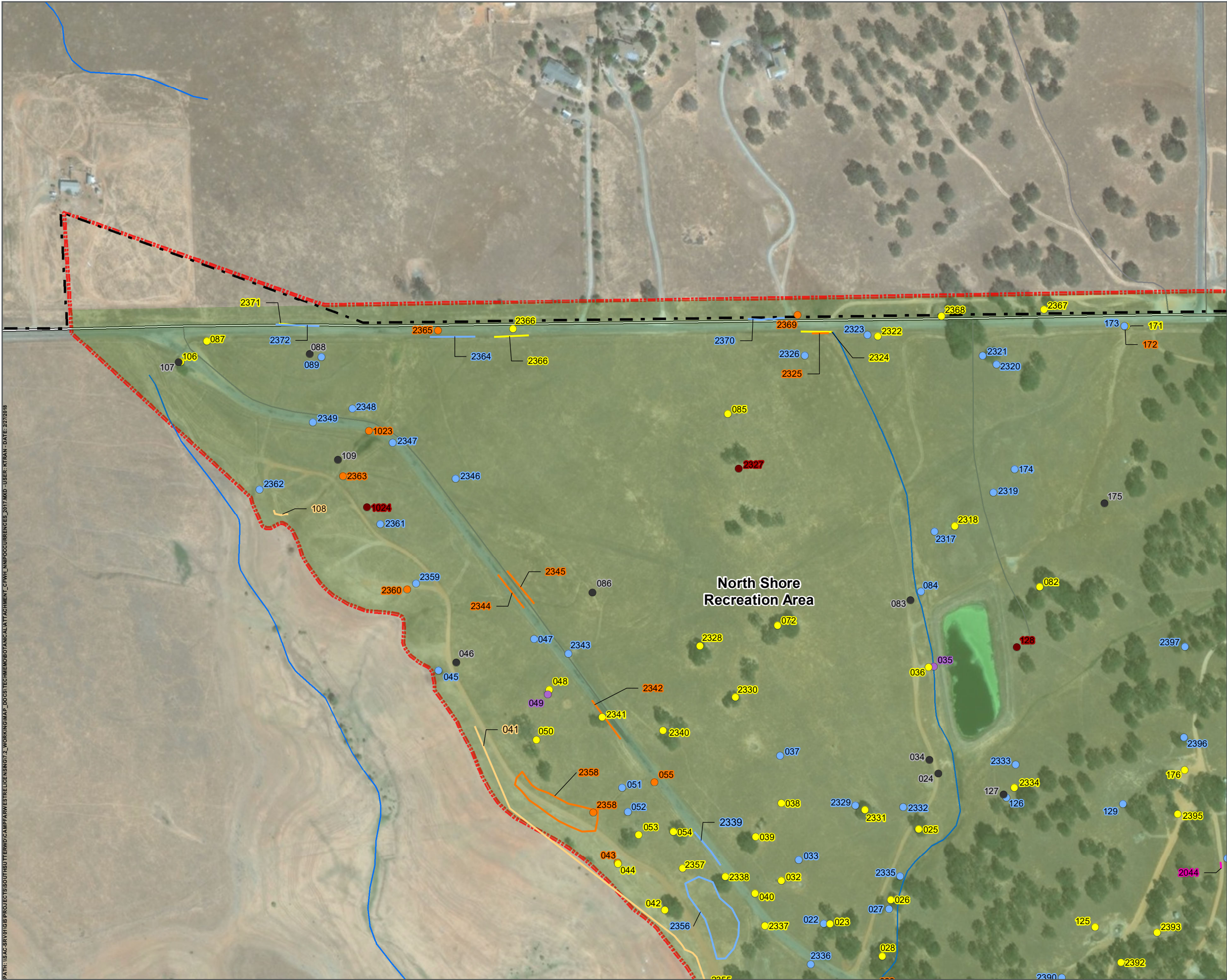
- Carduus pycnocephalus* (CARPYC)
- Centaurea solstitialis* (CENSOL)
- Chondrilla juncea* (CHOJUN)
- Cynodon dactylon* (CYNDAC)
- Elymus caput-medusae* (ELYCAP)
- Hypericum perforatum* (HYPPER)
- Carduus pycnocephalus* (CARPYC)
- Centaurea solstitialis* (CENSOL)
- Hypericum perforatum* (HYPPER)



CAMP FAR WEST HYDROELECTRIC PROJECT NON-NATIVE INVASIVE PLANT SPECIES FERC NO. 2997

Data Sources: Base Map - ArcGIS Online Streaming Layer (Imagery); Ferc Boundary - Yuba and Placer Counties GIS; Land Ownership - Yuba and Placer Counties CD-Data; Botanical Survey Area, Non-native Plant Species - HDR. Map information was compiled from the best available sources. No warranty is made for its accuracy or completeness.

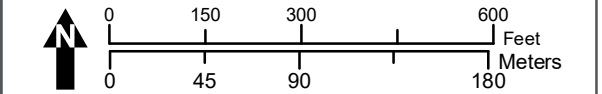
Map Prepared by: HDR | © 2018 South Sutter Water District



- Project Features**
- FERC Boundary (No.2997)
 - Recreation Site Area
- Non-Project Features**

- Base Map**
- Major Road
 - Minor Road
 - Stream/River
 - County Line
 - Study Area

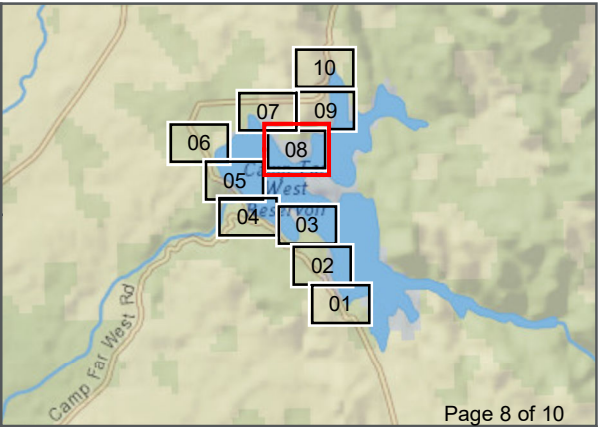
- Non-native Plant Species (NNIP)**
- Carduus pycnocephalus* (CARPYC)
 - Centaurea melitensis* (CENMEL)
 - Centaurea solstitialis* (CENSOL)
 - Chondrilla juncea* (CHOJUN)
 - Elymus caput-medusae* (ELYCAP)
 - Hypericum perforatum* (HYPPER)
 - Aegilops triuncialis* (AEGTRI)
 - Carduus pycnocephalus* (CARPYC)
 - Centaurea solstitialis* (CENSOL)
 - Cynodon dactylon* (CYNDAC)
 - Hypericum perforatum* (HYPPER)
 - Centaurea solstitialis* (CENSOL)
 - Hypericum perforatum* (HYPPER)



**CAMP FAR WEST HYDROELECTRIC PROJECT
NON-NATIVE INVASIVE PLANT SPECIES
FERC NO. 2997**

Data Sources: Base Map - ArcGIS Online Streaming Layer (Imagery); Ferc Boundary - Yuba and Placer Counties GIS; Land Ownership - Yuba and Placer Counties CD-Data; Botanical Survey Area, Non-native Plant Species - HDR. Map information was compiled from the best available sources. No warranty is made for its accuracy or completeness.

Map Prepared by: HDR | © 2018 South Sutter Water District



Project Features

FERC Boundary (No.2997)

Recreation Site Area

Non-Project Features

Base Map

Minor Road

Stream/River

County Line

Study Area

Non-native Plant Species (NNIP)

Bromus tectorum (BROTEC)

Carduus pycnocephalus (CARPYC)

Centaurea melitensis (CENMEL)

Centaurea solstitialis (CENSOL)

Chondrilla juncea (CHOJUN)

Cynodon dactylon (CYNDAC)

Elymus caput-medusae (ELYCAP)

Hypericum perforatum (HYPPER)

Aegilops triuncialis (AEGTRI)

Carduus pycnocephalus (CARPYC)

Centaurea solstitialis (CENSOL)

Chondrilla juncea (CHOJUN)

Cynodon dactylon (CYNDAC)

Hypericum perforatum (HYPPER)

Aegilops triuncialis (AEGTRI)

Bromus tectorum (BROTEC)

Carduus pycnocephalus (CARPYC)

Centaurea solstitialis (CENSOL)

Elymus caput-medusae (ELYCAP)

Hypericum perforatum (HYPPER)

0

150

300

600

0

45

90

180

Feet

Meters

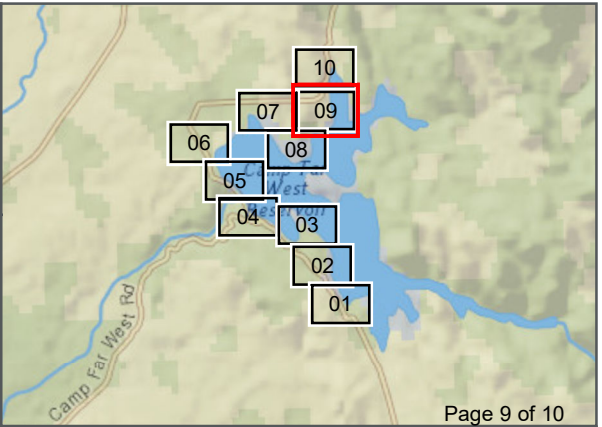
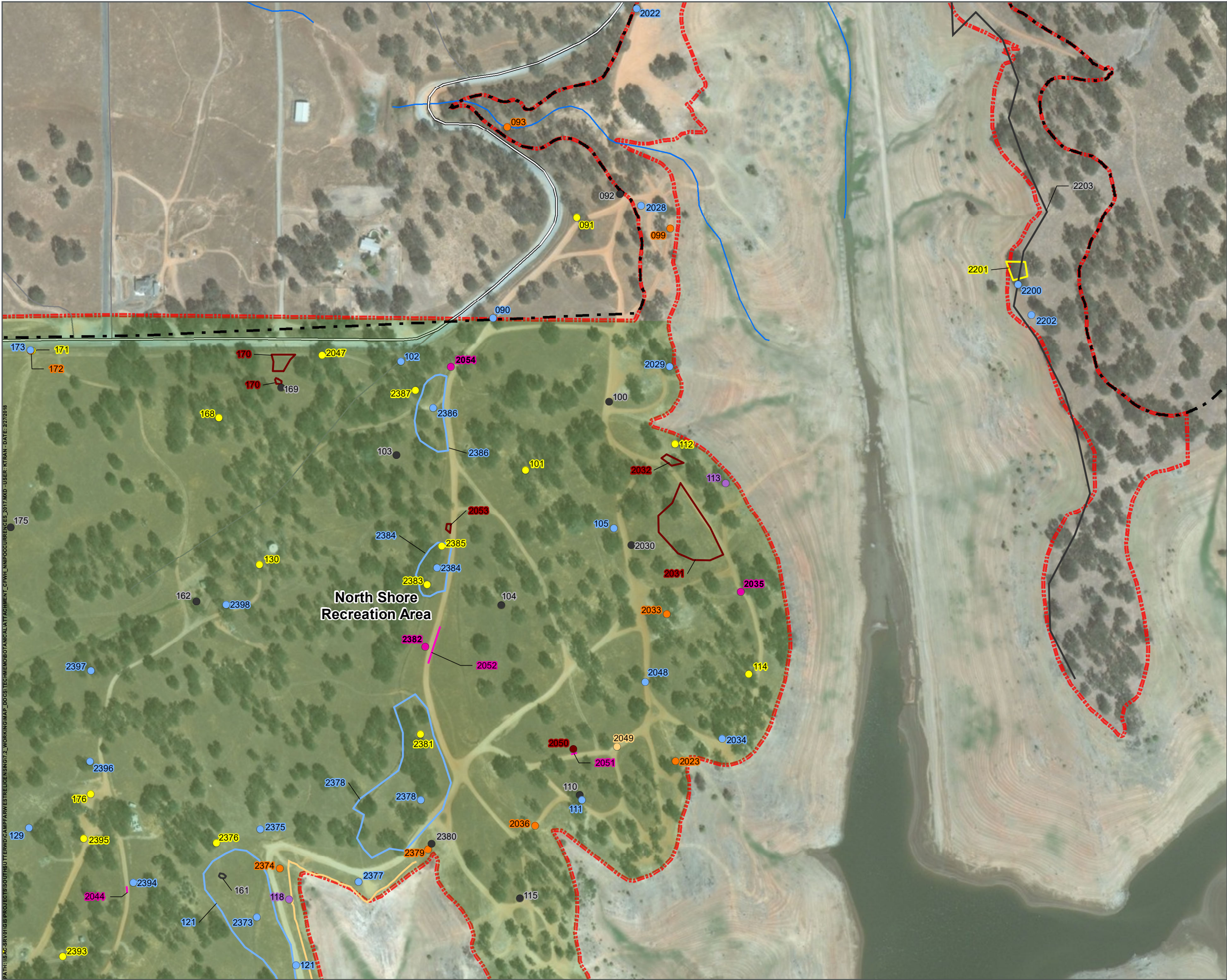
CAMP FAR WEST HYDROELECTRIC PROJECT

NON-NATIVE INVASIVE PLANT SPECIES

FERC NO. 2997

Data Sources: Base Map - ArcGIS Online Streaming Layer (Imagery); Ferc Boundary - Yuba and Placer Counties GIS; Land Ownership - Yuba and Placer Counties CD-Data; Botanical Survey Area, Non-native Plant Species - HDR. Map information was compiled from the best available sources. No warranty is made for its accuracy or completeness.

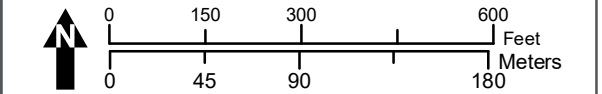
Map Prepared by: HDR | © 2018 South Sutter Water District



- Project Features**
- FERC Boundary (No.2997)
 - Recreation Site Area
- Non-Project Features**

- Base Map**
- Major Road
 - Minor Road
 - Stream/River
 - County Line
 - Study Area

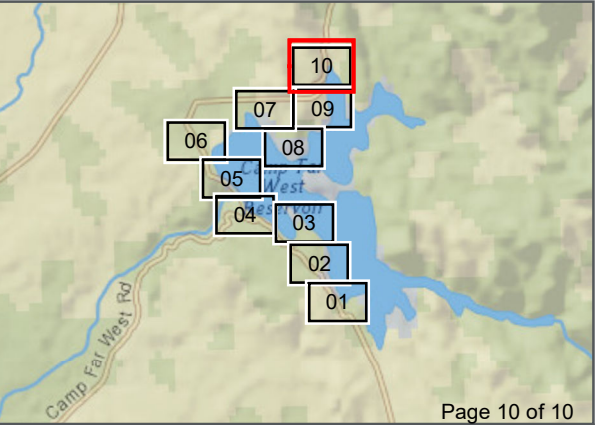
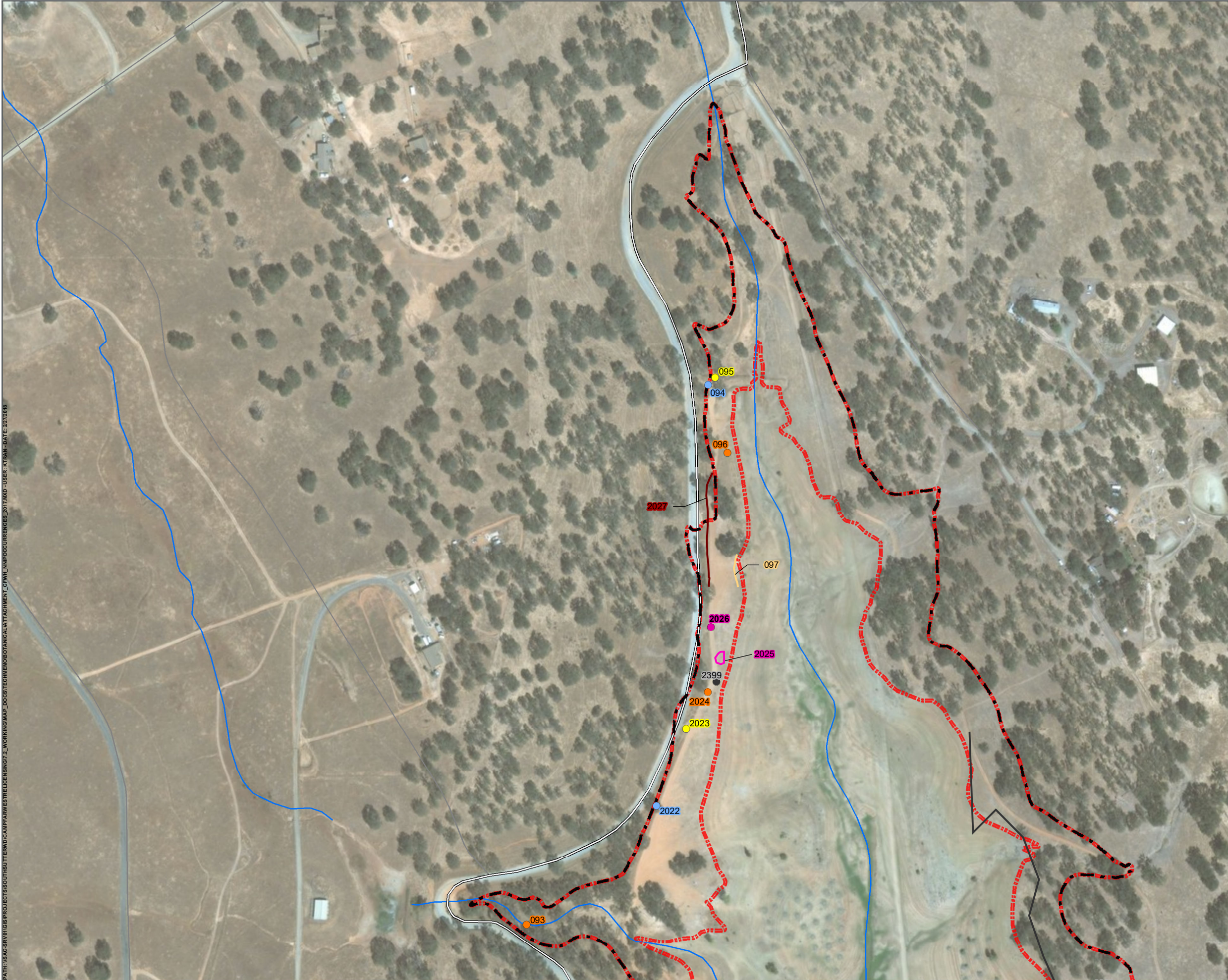
- Non-native Plant Species (NNIP)**
- Aegilops triuncialis* (AEGTRI)
 - Carduus pycnocephalus* (CARPYC)
 - Centaurea melitensis* (CENMEL)
 - Centaurea solstitialis* (CENSOL)
 - Chondrilla juncea* (CHOJUN)
 - Cynodon dactylon* (CYNDAC)
 - Elymus caput-medusae* (ELYCAP)
 - Hypericum perforatum* (HYPPER)
 - Carduus pycnocephalus* (CARPYC)
 - Chondrilla juncea* (CHOJUN)
 - Elymus caput-medusae* (ELYCAP)
 - Hypericum perforatum* (HYPPER)



**CAMP FAR WEST HYDROELECTRIC PROJECT
NON-NATIVE INVASIVE PLANT SPECIES
FERC NO. 2997**

Data Sources: Base Map - ArcGIS Online Streaming Layer (Imagery); Ferc Boundary - Yuba and Placer Counties GIS; Land Ownership - Yuba and Placer Counties CD-Data; Botanical Survey Area, Non-native Plant Species - HDR. Map information was compiled from the best available sources. No warranty is made for its accuracy or completeness.

Map Prepared by: HDR | © 2018 South Sutter Water District



Project Features

FERC Boundary (No.2997)

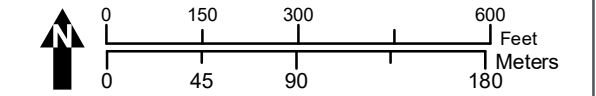
Non-Project Features

Base Map

Major Road
Minor Road
Stream/River
County Line
Study Area

Non-native Plant Species (NNIP)

Aegilops triuncialis (AEGTRI)
Carduus pycnocephalus (CARPYC)
Centaurea solstitialis (CENSOL)
Elymus caput-medusae (ELYCAP)
Hypericum perforatum (HYPPER)
Chondrilla juncea (CHOJUN)
Cynodon dactylon (CYNDAC)
Elymus caput-medusae (ELYCAP)



CAMP FAR WEST HYDROELECTRIC PROJECT NON-NATIVE INVASIVE PLANT SPECIES FERC NO. 2997

Data Sources: Base Map - ArcGIS Online Streaming Layer (Imagery); Ferc Boundary - Yuba and Placer Counties GIS; Land Ownership - Yuba and Placer Counties CD-Data; Botanical Survey Area, Non-native Plant Species - HDR. Map information was compiled from the best available sources. No warranty is made for its accuracy or completeness.

Map Prepared by: HDR | © 2018 South Sutter Water District