



LEGEND

- Bank Erosion Site
- Key LWM Piece
- Major River Mile
- River Mile Tenth

Stability Class: Elevation Above Water Surface

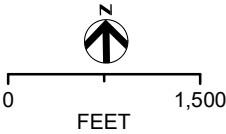
- 0 - 6
- 6 - 15
- 15 - 20
- 20 - 25
- >25

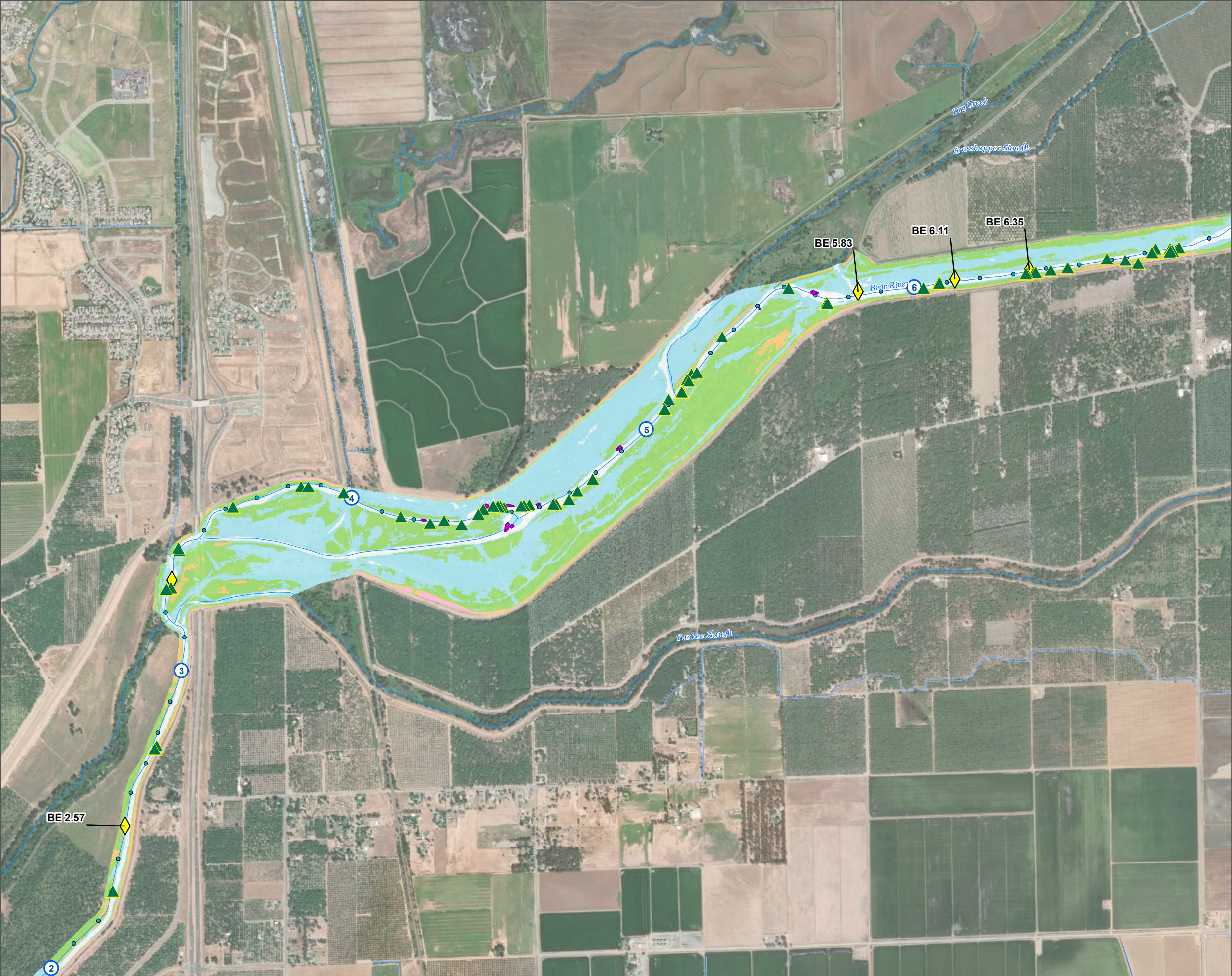
DATA SOURCES: Key Piece, Bank Erosion Site, Giant Cane - HDR Inc.
Service Layer Credits: Content may not reflect National Geographic's current map policy. Sources: National Geographic, Esri, Garmin, HERE, UNEP-WCMC, USGS, NASA, ESA, METI, NRCAN, GEBCO, NOAA, increment P Corp., Source: Esri, DigitalGlobe, GeoEye, Earthstar Geographics, CNES/Airbus DS, USDA, USGS, AeroGRID, IGN, and the GIS User Community

DISCLAIMER: Map information was compiled from the best available sources. No warranty is made for its accuracy or completeness. Map projection is UTM Zone 10 North.

**ATTACHMENT E3.3.1A
CHANNEL FORM AND
LARGE WOODY MATERIAL
KEY PIECES**

CAMP FAR WEST HYDROELECTRIC
PROJECT FERC NO. 2997





LEGEND

- Bank Erosion Site
- Key LWM Piece
- Major River Mile
- River Mile Tenth
- Giant Cane (*Arundo donax*)

Stability Class: Elevation Above Water Surface

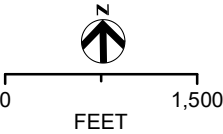
- 0 - 6
- 6 - 15
- 15 - 20
- 20 - 25
- >25

DATA SOURCES: Key Piece, Bank Erosion Site, Giant Cane - HDR Inc.
 Service Layer Credits: Content may not reflect National Geographic's current map policy. Sources: National Geographic, Esri, Garmin, HERE, UNEP-WCMC, USGS, NASA, ESA, METI, NRCAN, GEBCO, NOAA, increment P Corp., Source: Esri, DigitalGlobe, GeoEye, Earthstar Geographics, CNES/Airbus DS, USDA, USGS, AeroGRID, IGN, and the GIS User Community

DISCLAIMER: Map information was compiled from the best available sources. No warranty is made for its accuracy or completeness. Map projection is UTM Zone 10 North.

ATTACHMENT E3.3.1A CHANNEL FORM AND LARGE WOODY MATERIAL KEY PIECES

CAMP FAR WEST HYDROELECTRIC
PROJECT FERC NO. 2997





LEGEND

- Bank Erosion Site
- Key LWM Piece
- Major River Mile
- River Mile Tenth
- Giant Cane (*Arundo donax*)

Stability Class: Elevation Above Water Surface

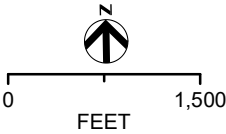
- 0 - 6
- 6 - 15
- 15 - 20
- 20 - 25
- >25

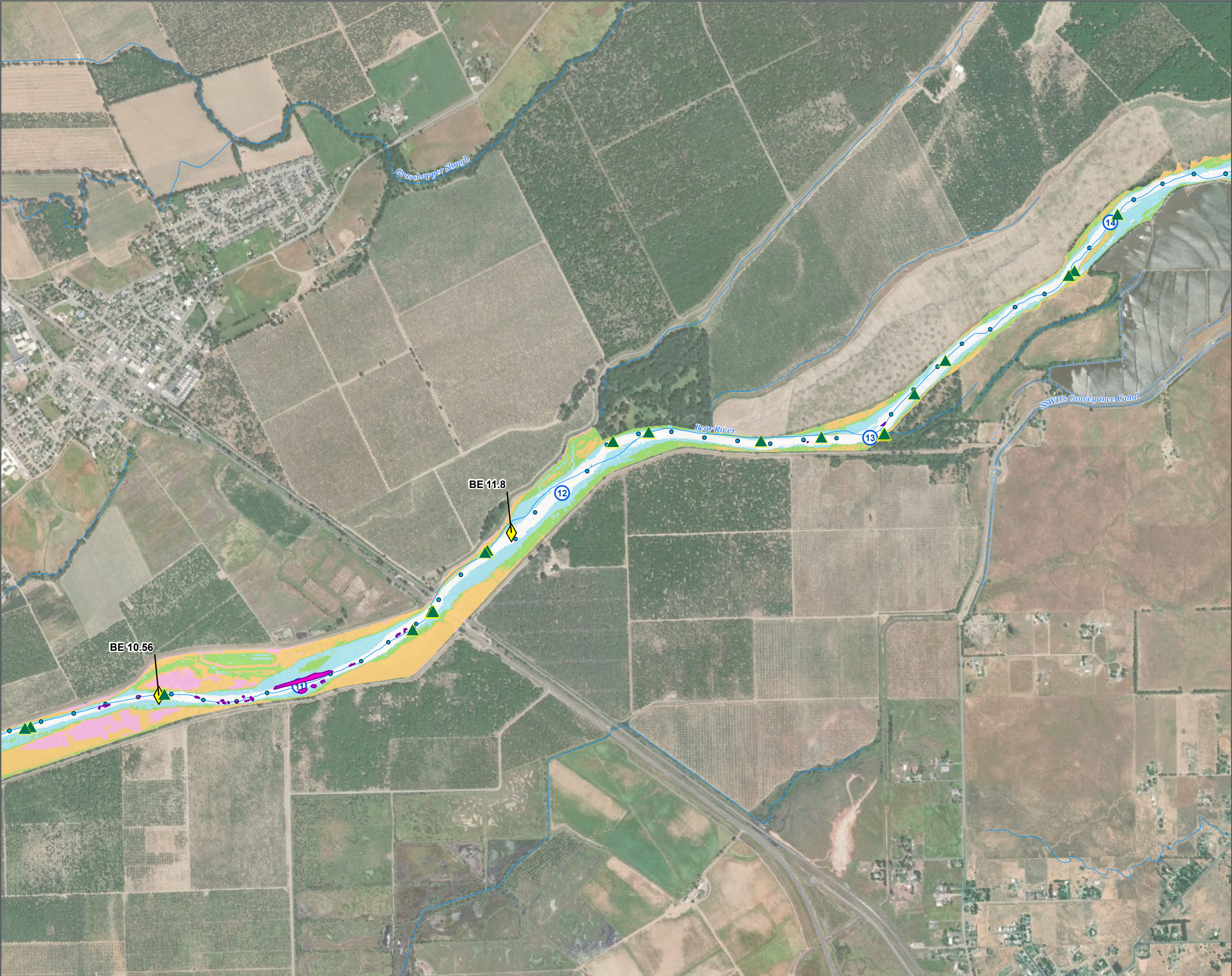
DATA SOURCES: Key Piece, Bank Erosion Site, Giant Cane - HDR Inc.
Service Layer Credits: Content may not reflect National Geographic's current map policy. Sources: National Geographic, Esri, Garmin, HERE, UNEP-WCMC, USGS, NASA, ESA, METI, NRCAN, GEBCO, NOAA, increment P Corp., Source: Esri, DigitalGlobe, GeoEye, Earthstar Geographics, CNES/Airbus DS, USDA, USGS, AeroGRID, IGN, and the GIS User Community

DISCLAIMER: Map information was compiled from the best available sources. No warranty is made for its accuracy or completeness. Map projection is UTM Zone 10 North.

**ATTACHMENT E3.3.1A
CHANNEL FORM AND
LARGE WOODY MATERIAL
KEY PIECES**

CAMP FAR WEST HYDROELECTRIC
PROJECT FERC NO. 2997





LEGEND

- Bank Erosion Site
- Key LWM Piece
- Major River Mile
- River Mile Tenth
- Giant Cane (*Arundo donax*)

Stability Class: Elevation Above Water Surface

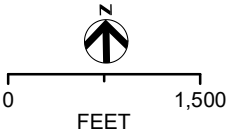
	0 - 6
	6 - 15
	15 - 20
	20 - 25
	>25

DATA SOURCES: Key Piece, Bank Erosion Site, Giant Cane - HDR Inc.
Service Layer Credits: Content may not reflect National Geographic's current map policy. Sources: National Geographic, Esri, Garmin, HERE, UNEP-WCMC, USGS, NASA, ESA, METI, NRCAN, GEBCO, NOAA, increment P Corp., Source: Esri, DigitalGlobe, GeoEye, Earthstar Geographics, CNES/Airbus DS, USDA, USGS, AeroGRID, IGN, and the GIS User Community

DISCLAIMER: Map information was compiled from the best available sources. No warranty is made for its accuracy or completeness. Map projection is UTM Zone 10 North.

**ATTACHMENT E3.3.1A
CHANNEL FORM AND
LARGE WOODY MATERIAL
KEY PIECES**

CAMP FAR WEST HYDROELECTRIC
PROJECT FERC NO. 2997





LEGEND

- Bank Erosion Site
- Key LWM Piece
- Major River Mile
- River Mile Tenth

Stability Class: Elevation Above Water Surface

0 - 6
6 - 15
15 - 20
20 - 25
>25

DATA SOURCES: Key Piece, Bank Erosion Site, Giant Cane - HDR Inc.
Service Layer Credits: Content may not reflect National Geographic's current map policy. Sources: National Geographic, Esri, Garmin, HERE, UNEP-WCMC, USGS, NASA, ESA, METI, NRCAN, GEBCO, NOAA, increment P Corp., Source: Esri, DigitalGlobe, GeoEye, Earthstar Geographics, CNES/Airbus DS, USDA, USGS, AeroGRID, IGN, and the GIS User Community

DISCLAIMER: Map information was compiled from the best available sources. No warranty is made for its accuracy or completeness. Map projection is UTM Zone 10 North.

**ATTACHMENT E3.3.1A
CHANNEL FORM AND
LARGE WOODY MATERIAL
KEY PIECES**

CAMP FAR WEST HYDROELECTRIC
PROJECT FERC NO. 2997

